



GENIVI POIService API

Release 1.0.0
Status: Approved

15.04.2014

Accepted for release by:

This document has been accepted for release by the Expert Group Location Based Services (EG-LBS) and the System Architecture team (SAT)

Abstract:

This document describes the API of the POIService Abstract Component.

Keywords:

POIService.

SPDX-License-Identifier: CC-BY-SA-3.0

Copyright (C) 2014, BMW Car IT GmbH, Continental Automotive GmbH, PCA Peugeot Citroën, XS Embedded GmbH, TomTom International B.V., Alpine Electronics R&D Europe GmbH, AISIN AW CO, Jaguar Land Rover Limited, Visteon Corporation.

This work is licensed under the Creative Commons Attribution-ShareAlike 3.0 Unported License.

To view a copy of this license, visit <http://creativecommons.org/licenses/by-sa/3.0/> or send a letter to Creative Commons, 444 Castro Street, Suite 900, Mountain View, California, 94041, USA.

Table of contents

1	Change History	3
2	Introduction.....	4
3	Terminology.....	5
4	Architecture.....	6
4.1	Interfaces.....	6
4.2	Interaction with other Components.....	7
5	API.....	8
5.1	D-Bus	8
5.2	Git Repository.....	8
5.3	Naming Conventions	8
5.4	Data Types Convention.....	9
5.5	Errors	10
5.6	Use Cases.....	11
5.6.1	POI Search.....	11
5.6.1.1	The HMI displays the list of POI categories.....	11
5.6.1.2	The user searches for a restaurants around his/her position.....	12
5.6.1.3	The user is running out of fuel and therefore creates a proximity alert around his/her position to receive a sound alert in case a new fuel station is detected	13
5.6.2	POI Content Access.....	14
5.6.2.1	The user wants to get a list of car parks with free places around the current position sorted by price.....	14
5.6.2.2	The user wants to display on the map the location of all his/her Facebook friends around the vehicle position (the profile picture is used to mark a friend's position)..	15
5.6.2.3	The user wants to navigate to his/her doctor (the one listed in his/her phone contact book) if the office is open	16
5.6.2.4	The user wants to watch a movie. The user requests a list of movies projected in nearby cinemas with description, cinema name and price, all sorted by start time....	17
5.6.2.5	The user creates a proximity alert along its route to receive a sound in case of dangerous area	18
5.7	Interfaces.....	19

1 Change History

Version	Date	Author	Change
0.1	24 Oct 2012	Marco Residori (XS Embedded)	Created empty template
0.2	19 Dec 2012	Marco Residori (XS Embedded)	Added architecture diagram. Added sequence Diagrams. Updated APIs, Added Cedric Ranson's use case descriptions.
1.0	19 Dec 2012	Marco Residori (XS Embedded)	Added architecture diagram. Corrected typos.
1.0	15 Apr 2014	Philippe Colliot (PCA Peugeot Citroën)	Move license scheme to CC, remove obsolete mentions

2 Introduction

This document describes the API of the POIService component.

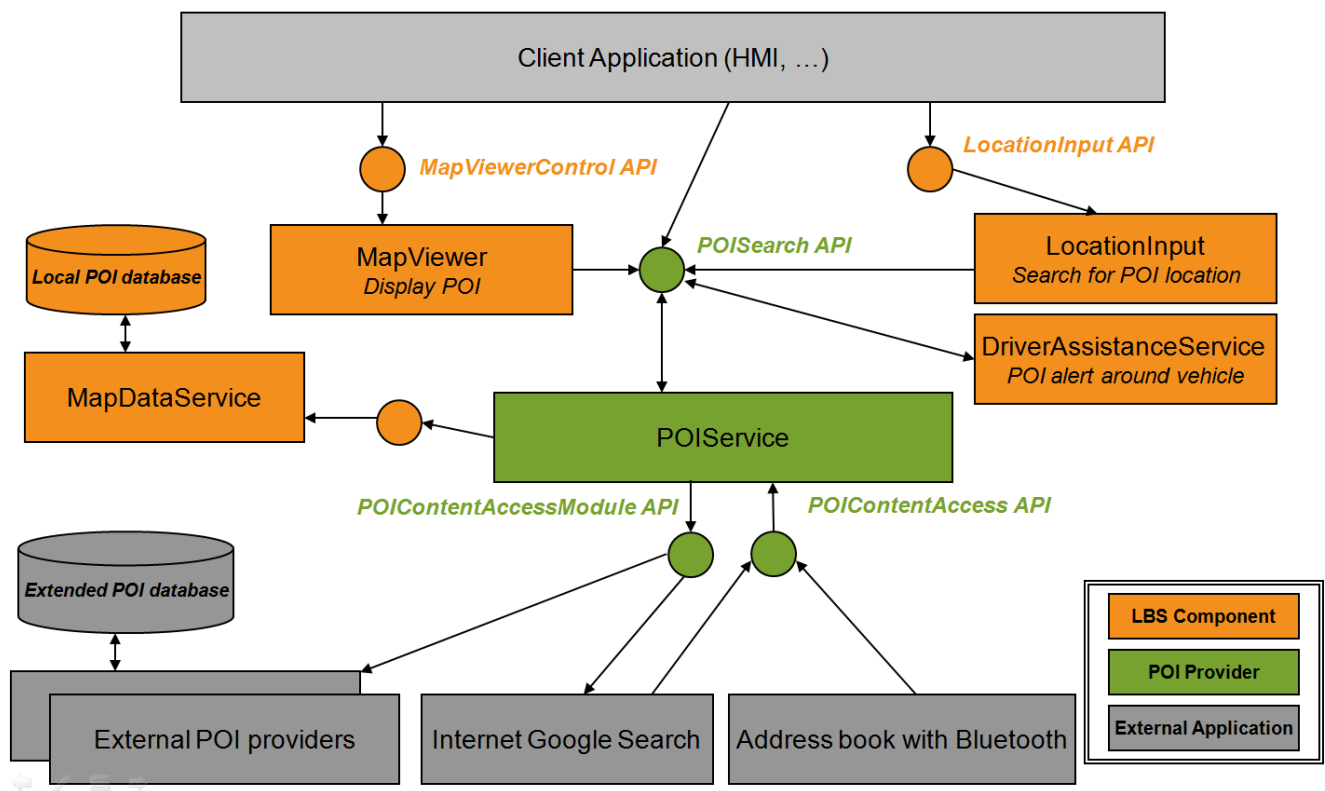
3 Terminology

<i>Term</i>	<i>Description</i>
POI	Point of Interest
CAM	Content Access Module

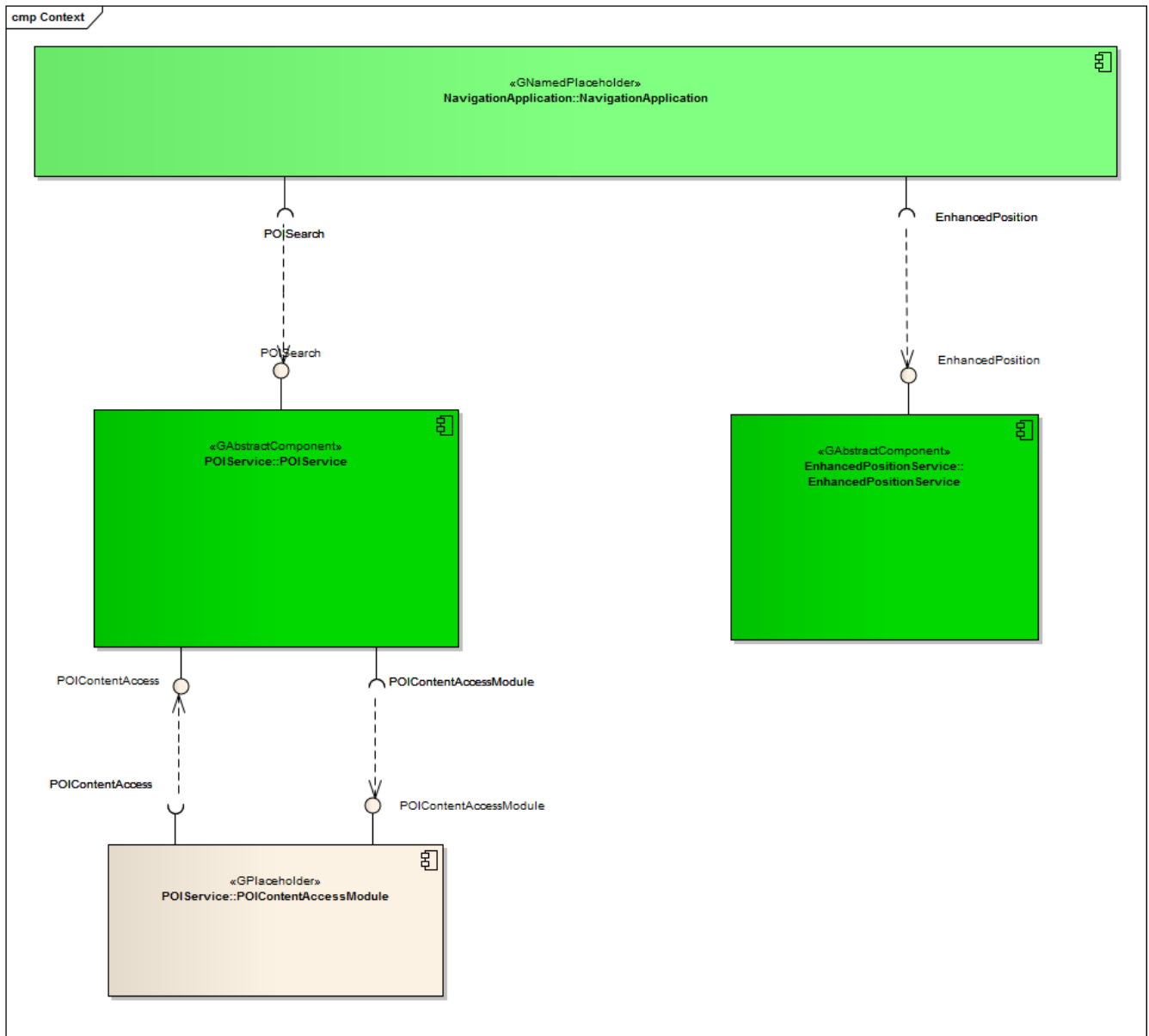
4 Architecture

4.1 Interfaces

- POISearch
- POIContentAccess
- POIContentAccessModule



4.2 Interaction with other Components



5 API

5.1 D-Bus

The POIService interfaces are D-Bus interfaces. They are defined using the D-Bus introspection data format, which is nothing but an IDL expressed in XML format.

For more information about the D-Bus data types please refer to the following website:
<http://dbus.freedesktop.org/doc/dbus-specification.html#message-protocol-signatures>

For more information about the D-Bus introspection data format, please refer to the following website:
<http://dbus.freedesktop.org/doc/dbus-specification.html#introspection-format>

5.2 Git Repository

The POIService interfaces can be found in the GENIVI Git repository at:
<https://git.genivi.org/git/gitweb.cgi?p=poi-service>

5.3 Naming Conventions

Element	Description	Example
Interface File	genivi.<component name in lowercase character>.<interface name in lowercase characters>	genivi.poiservice.poisearch.xml
Methods/Signal/Properties	Camel case naming convention First letter uppercase	StartPoiSearch
Arguments	Camel case naming convention First letter lowercase	poiSearchHandle

5.4 Data Types Convention

D-bus types code are used. Please refer to the following webpage for more information:

<http://dbus.freedesktop.org/doc/dbus-specification.html>

Element	D-Bus Data Type Code	Example
Enumerators	q (uint16)	
Handles	y (uint8)	
Maps	a{qv}	Dictionary of tuples (key, value) The key is expressed as an enumerator

5.5 Errors

Error Type	Description	Example	Error Documentation	Note
User Error	Error caused by user actions	The user tries to start route guidance, although guidance is already running	Application specific error string documented in the XML file	Can occur in final product
Hardware Error	Error related to hardware/database related problems	No map data	Application specific error string documented in the XML file	Can occur in final product
Protocol Error	Error caused by wrong sequence of commands	Wrong sequence of commands to enter destination	Standard D-Bus error string	Should not occur in final product
Bus Error	D-Bus communication error	Bus busy	Standard D-Bus error string	Can occur in final product
Programming Error	Programming Error	Invalid parameters	Standard D-Bus error string and debug messages	Should not occur in production code

Only application-specific errors are documented directly in the interfaces (XML files). For all other errors, standard D-Bus strings are used. These kinds of strings are not documented in the interfaces. It is implicitly assumed that every method may return a standard D-Bus error string.

5.6 Use Cases

5.6.1 POI Search

5.6.1.1 The HMI displays the list of POI categories

Description

The HMI retrieves the root category from the component (should be ALL_CATEGORIES).

The HMI retrieves the children categories of the root category.

For each child category, the HMI retrieves its children:

If there are no children, the HMI retrieves the category details from the component and displays its name as a searchable category.

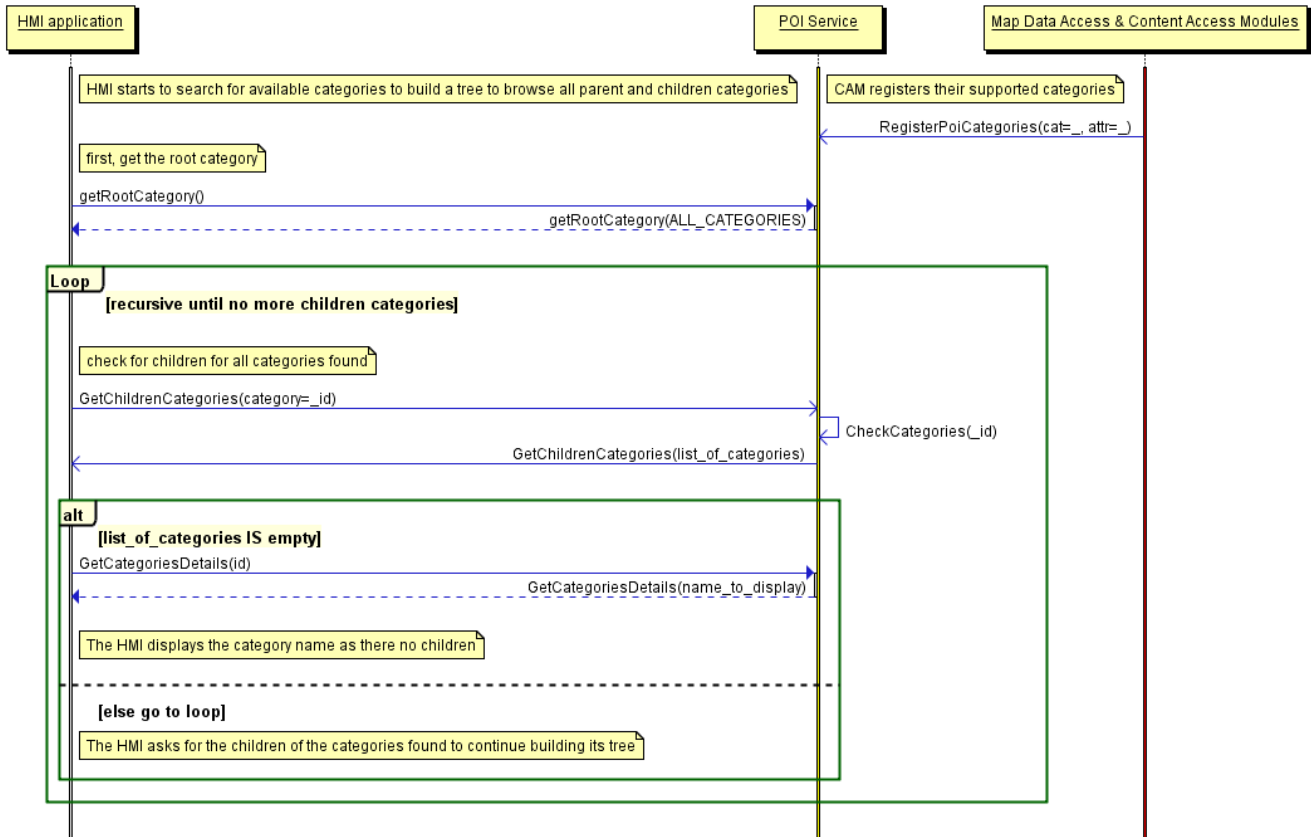
It can also display its visual icon.

For each child found, the HMI retrieves the children again and then displays the category name if there are no children.

Error Management

Root category is not available.

Sequence diagram



5.6.1.2 The user searches for a restaurants around his/her position

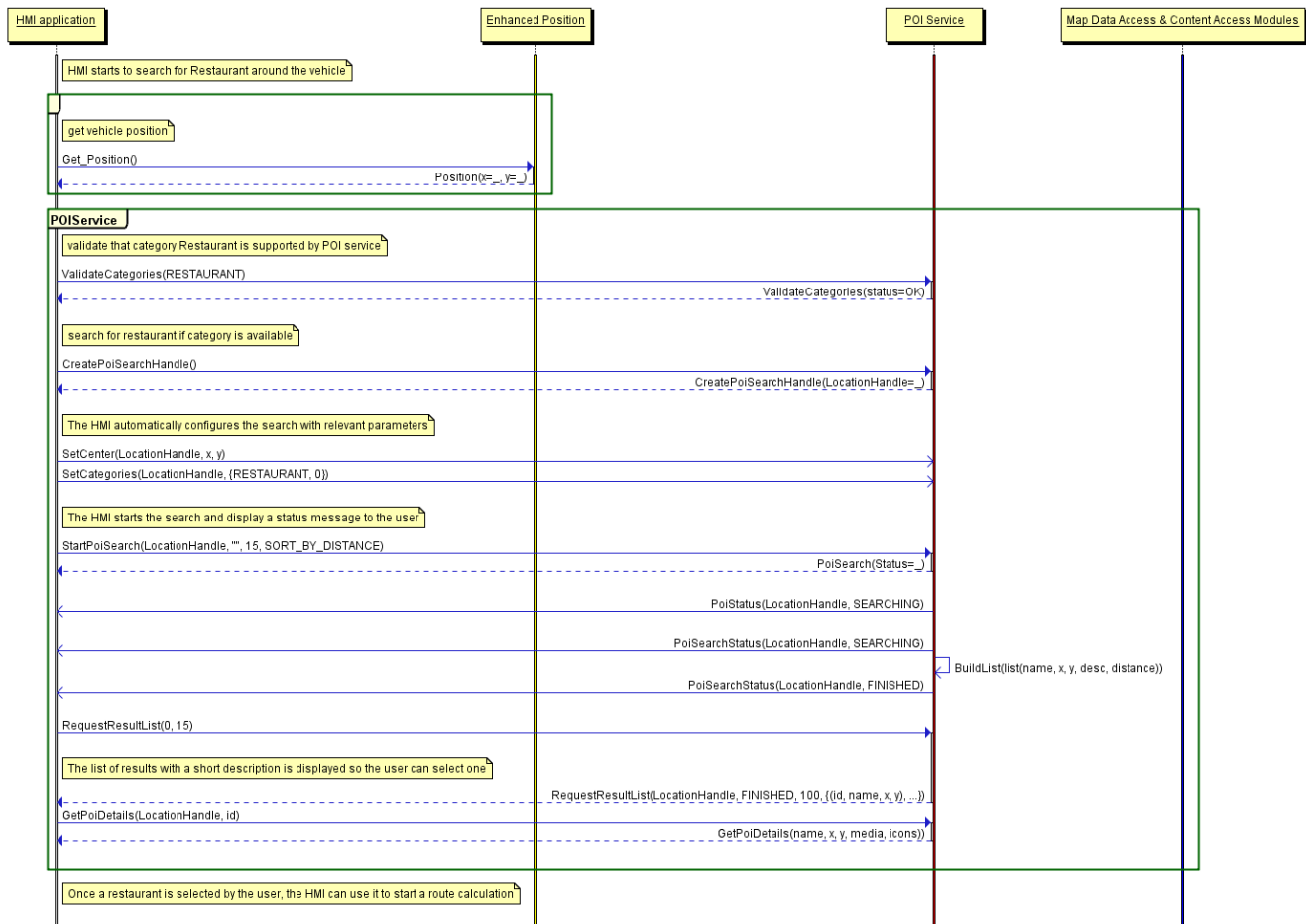
Description

The HMI retrieves the list of POI categories from the **search POI** API.
 The HMI retrieves the vehicle position from the **enhanced position** API.
 The HMI selects restaurant as a category and searches for POI around the vehicle position. It does not provide a search radius.
 The POIService component defines a default radius for the category *restaurant*.
 The POIService component searches for restaurant around the vehicle position within the local database.
 The POIService component provides the list of restaurants sorted by distance. It also provides basic details.
 The HMI browses the list and ask for detailed information for one of the POI.
 The POIService component gets detailed information from the local database.
 The HMI decides to drive to this restaurant.
 The POIService component provides the location of the restaurant.

Error Management

If the local database access is down, the component returns an error.

Sequence diagram



5.6.1.3 The user is running out of fuel and therefore creates a proximity alert around his/her position to receive a sound alert in case a new fuel station is detected

Preconditions

The fuel station is a category that is supported by the local database.

Description

The HMI configures a new POI proximity alert for fuel station around the vehicle.

The HMI retrieves the vehicle position and the vehicle speed from the **enhanced position** API.

The POIService component defines the search radius of 500 meters.

The POIService component gets the list of fuel stations around the current position from the local database using **map data access** API.

A new list of POI is sent to the HMI with all the fuel station that match the alert configuration.

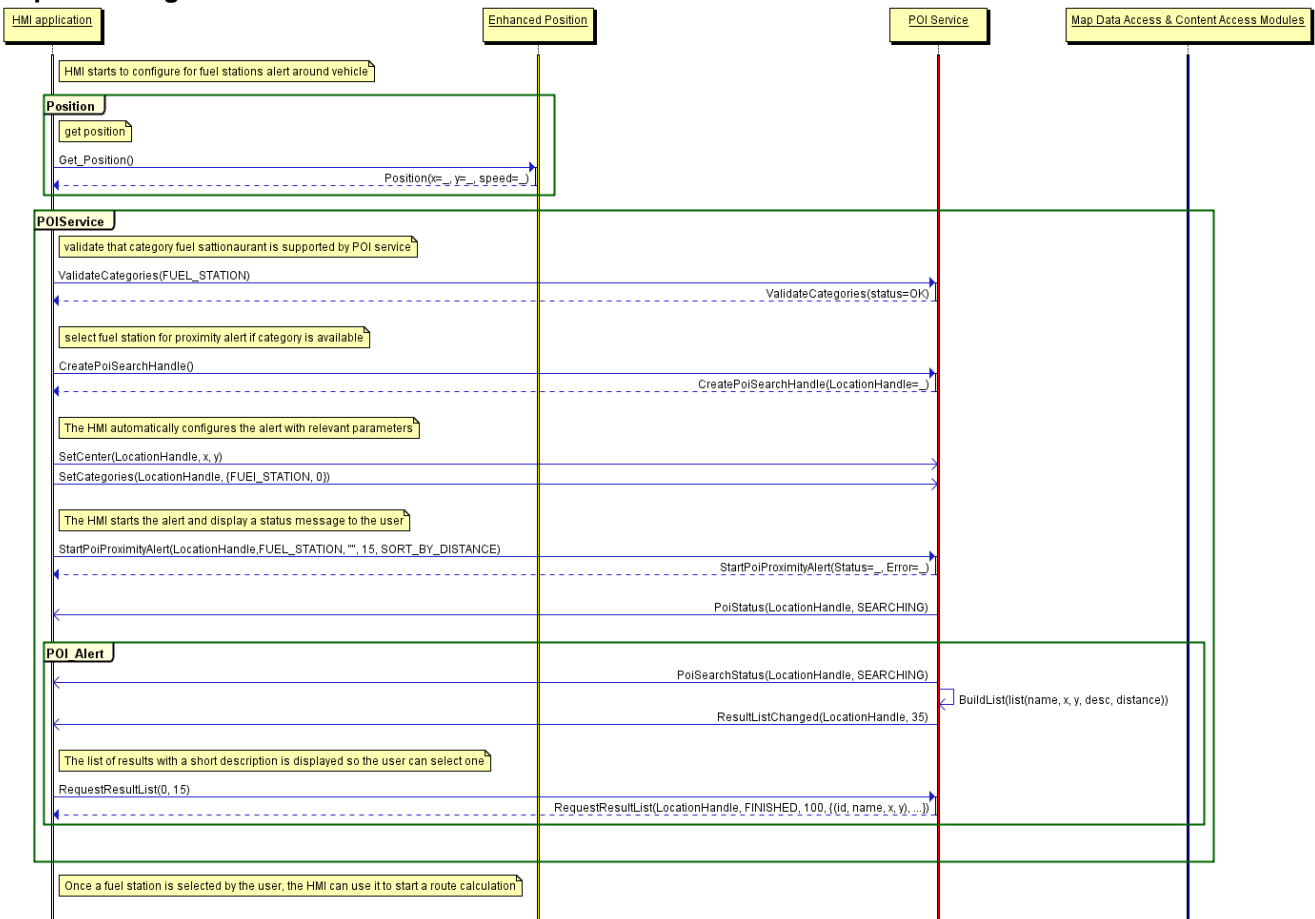
The HMI plays a sound when a new (non-empty) list of POI is received.

As soon as new fuel stations are available or current fuel stations are out the search radius, a new list is provided.

Error Management

If the local database access is down, the component returns an error.

Sequence diagram



5.6.2 POI Content Access

5.6.2.1 The user wants to get a list of car parks with free places around the current position sorted by price

Preconditions

A plug-in was already installed in the POI Service component to access an identified online service that provides car park information (price and places left) from the name and coordinates of a car park.

Description

The HMI retrieves the vehicle position from the **enhanced position** API.

The HMI retrieves the list of car parks with free places sorted by price around the position from the **search POI** API.

The POIService component get the list of car parks around the current position from the local database using **map data access** API.

For each car park name and location found, the POI Service uses **POI content access** API to get free places available and the park price from the plug-in (described below).

The POIService component stores the result (all POI found with dynamic content) into the persistent storage to manage the 'connection-down' error. This content is deleted when it gets too old.

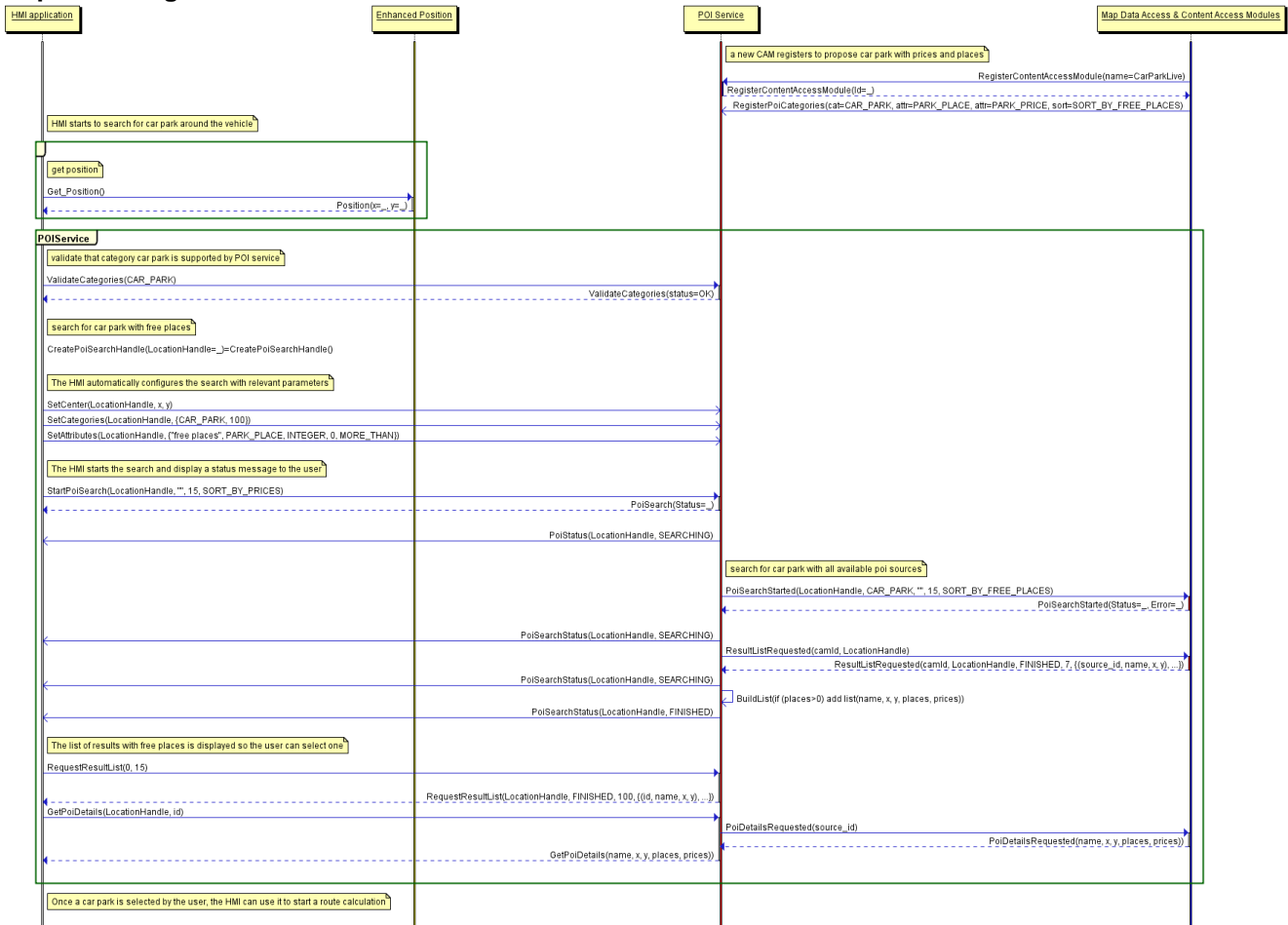
The POIService component updates each car park attribute with available places and sorts the list by price.

Error Management

If the local database access is down, the component returns an error.

If the network connection to the online provider is down, the content access module tries to retrieve latest content from its persistent storage (if any). If this content is too old (depends on CAM policy), it returns an error.

Sequence diagram



5.6.2.2 The user wants to display on the map the location of all his/her Facebook friends around the vehicle position (the profile picture is used to mark a friend's position)

Preconditions

A plug-in was already installed in the POI Service component to access Facebook services and extract the profile picture and the current address from a list of friends.

This plug-in also registered a new POI category called **Facebook friends** and sub-category of predefined **User contact**.

The MapViewer API provides a way to create a custom location on the map with coordinates, name and icons.

Description

The HMI retrieves the vehicle position from the **enhanced position** API.

The HMI retrieves the list of Facebook friends from the **search POI** API around the vehicle position.

POI Service components gets the list of Facebook friends (with photo, name and coordinates) around the current position from the Facebook plug-in **POI content access** API.

The POI Service component stores the result into the persistent storage to manage the 'connection-down' error.

This content is deleted when it gets too old.

For each friend, the POI Service uses **MapViewer** API to update the map with icons.

Error Management

If the network connection to the online provider is down, the content access module tries to retrieve latest content from its persistent storage (if any). If this content is too old (1 hour), it returns an error.

5.6.2.3 The user wants to navigate to his/her doctor (the one listed in his/her phone contact book) if the office is open

Preconditions

A plug-in was already installed in the POI Service component to access a doctor's web site. The plug-in extracts the opening times and the doctor's office address.

A plug-in was already installed in the POI Service component to access the user's smartphone. The plug-in extracts a contact list from a group of names (friend, family, doctor, ...).

This plug-in created a new POI category called **My Phone Groups** with sub-categories like **friend** or **doctor**.

Description

The HMI retrieves the doctor's office coordinates and opening times from the user's phone POI group doctor with the **search POI** API.

The POIService component gets the doctor's office opening time and coordinates from the smartphone contacts plug-in using the **POI content access** API.

The HMI validates that the opening times match current time and start a route calculation.

The POIService component gets the doctor's office coordinates from previously stored data.

The POIService uses **NavigationCore** API to start a route calculation from vehicle position to doctor's office.

Error Management

If the network connection to the online provider is down, the content access module returns an error.

5.6.2.4 The user wants to watch a movie. The user requests a list of movies projected in nearby cinemas with description, cinema name and price, all sorted by start time

Preconditions

A plug-in was already installed in the POI Service component to access an identified online service that provides cinema information (list of movies, opening times, prices and movies information like review and trailer link) from the name and coordinates of a cinema.

Description

The HMI retrieves the vehicle position from the **enhanced position** API.

The HMI retrieves the list of cinema with movies that starts in less than 1 hour around the current position from the **search POI** API. The list is sorted by start time.

The POIService component gets the list of cinemas around the current position from the local database using the **map data access** API.

For each cinema name and location found, the POI Service uses **POI content access** API to get list of movies available with start time, movie information and price from the plug-in (described below).

The HMI display the list of movies sorted by start time (the sooner the first) with a quick description, a review, the price and the cinema name.

The rear seat HMI downloads a video from movie trailer link and displays it.

Depending upon the selected film, the POIServicecomponent gets the cinema coordinates from previously stored data.

The POIService uses **NavigationCore** API to start a route calculation from vehicle position to the cinema.

Error Management

If the local database access is down, the component returns an error

If the network connection to the online provider is down, the content access module tries to retrieve latest content from its persistent storage (if any). If this content is too old (20 minutes), it returns an error.

5.6.2.5 The user creates a proximity alert along its route to receive a sound in case of dangerous area

Preconditions

A plug-in was already installed in the POI Service component to access an identified online service that provides dangerous area content (road conditions, weather, traffic jam, men at work) around a location.
The dangerous area is a category that is supported by the local database.

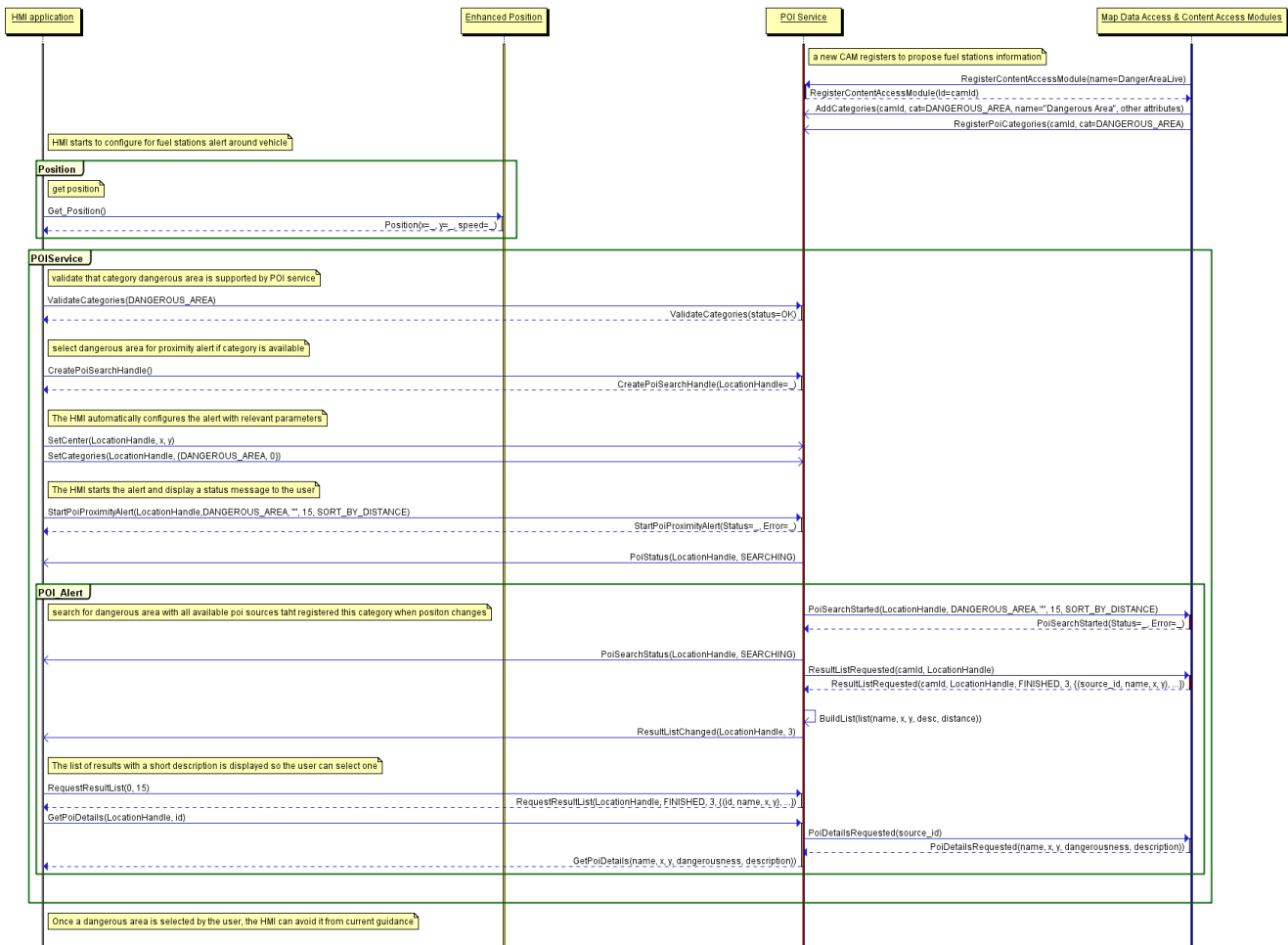
Description

The HMI configures a new POI proximity alert for dangerous events in front of the vehicle.
The HMI retrieves the vehicle position and speed from the **enhanced position** API.
The POI component defines the search radius in front of vehicle position depending on the category and the vehicle speed.
The POI Service component gets the list of dangerous areas around the current position from the local database using the **map data access** API.
The POI Service component gets the list of dangerous events around the position from content access module according to its defined radius and criteria.
The POI Service component updates local events with dynamic contents if necessary.
A new list of POI is sent to the HMI with all the events (from local and from CAM) that match the alert configuration.
The HMI plays a sound when a new (non-empty) list of POI is received.

Error Management

If the local database access is down, the component returns an error.
If the network connection to the online provider is down, the content access module tries to retrieve latest content from its persistent storage (if any). If this content is too old (more than 2 minutes), it returns an error.

Sequence diagram



5.7 Interfaces

The following chapters describe the methods and signals of the POIService API.