



1

2

GENIVI Alliance

3GENIVI Document CS00065

4MapViewer

5Component Specification

6Accepted Version 4.0.0

725-01-2017

8Sponsored by:

9GENIVI Alliance

10true

11Accepted

12Abstract:

13This document provides the Component Specification for the MapViewer

14Keywords:

15Navigation, MapViewer

1Y2013GENIVI Alliance.

22400 Camino Ramon, Suite 375, San Ramon, CA 94583, USA

3<http://www.genivi.org>

2

1This work is licensed under a Creative Commons Attribution-ShareAlike 4.0 International
2License. Copyright © 2017, trueBMW Car IT GmbH, Continental Automotive GmbH, PCA Peugeot Citroën, XS
3Embedded GmbH, TomTom International B.V., Alpine Electronics R&D Europe GmbH, AISIN AW CO.LTD.

4

5All rights reserved.

6The information within this document is the property of the true and its use and disclosure are restricted. Elements of
7GENIVI Alliance specifications may be subject to third party intellectual property rights, including without limitation, pat-
8ent, copyright or trademark rights (and such third parties may or may not be members of GENIVI Alliance). GENIVI Alli-
9ance true not responsible and shall not be held responsible in any manner for identifying, failing to identify, or for securing
10proper access to or use of, any or all such third party intellectual property rights.true

11“”“”

12

13

14

15

16

17GENIVI and the GENIVI Logo are trademarks of GENIVI Alliance in the U.S. and/or other countries. Other company,
18brand and product names referred to in this document may be trademarks that are claimed as the property of their respective
19owners.

20trueThis work is licensed under a Creative Commons Attribution-ShareAlike 4.0 International License.

21<http://creativecommons.org/licenses/by-sa/4.0>

22

23

24The above notice and this paragraph must be included on all copies of this document that are made.

25

26

27

GENIVI Alliance
2400 Camino Ramon, Suite 375
San Ramon, CA 94583, USA

Table of contents

31Change History.....4

42Introduction.....5

53Terminology.....6

64Architecture.....7

7 4.1Interfaces.....7

8 4.2Interaction with other Components.....8

95API.....9

10 5.1Git Repository.....9

11 5.2Sequence Diagrams.....9

 5.2.1navigation application browses map.....9

 5.2.2navigation application creates map session.....11

 5.2.3navigation application sets center.....12

 5.2.4navigation application sets map zoom by delta.....13

 5.2.5navigation application shows route.....14

12 5.3Interfaces.....15

13

14

15

1 Change History

Version	Date	Author	Change
0.1	27 Feb 2012	Marco Residori (XS Embedded)	Document Created
0.2	19 Mar 2012	Marco Residori (XS Embedded)	Updated sequence diagrams. Updated <i>Interfaces</i> chapter.
0.3	21 Mar 2012	Marco Residori (XS Embedded)	Updated <i>Interfaces</i> chapter.
1.0	22 Mar 2012	Marco Residori (XS Embedded)	System Architecture Team (SAT) approval.
2.0 (beta)	07 Jun 2013	Marco Residori (XS Embedded)	Updated API description. API Version 2.0.
2.0	17 Jun 2013	Marco Residori (XS Embedded)	Updated API description. API fixes: GT-2651. API Version 2.0 (<i>4emini-final</i> tag)
3.0.0	21 Jan 2014	Marco Residori (XS Embedded)	Updated API description. API Version 3.0.0.
3.0.1	22 May 2014	Marco Residori (XS Embedded)	Updated copyright notes.
3.0.2	30 June 2014	Marco Residori (XS Embedded)	Updated contributors list.
4.0	7 Feb 2017	Philippe COLLIOT (PSA GROUPE)	Refine the document for Franca based API

2 Introduction

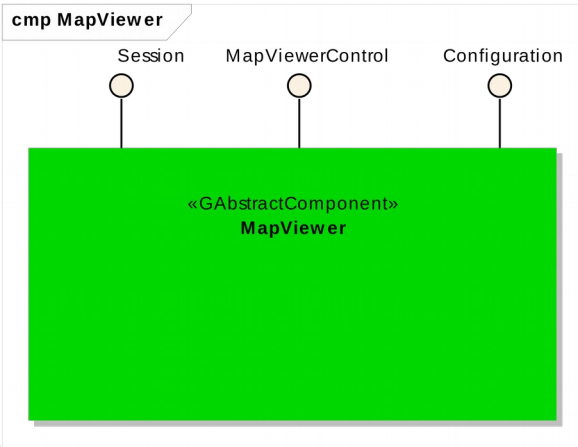
This document describes the MapViewer API.

3 Terminology

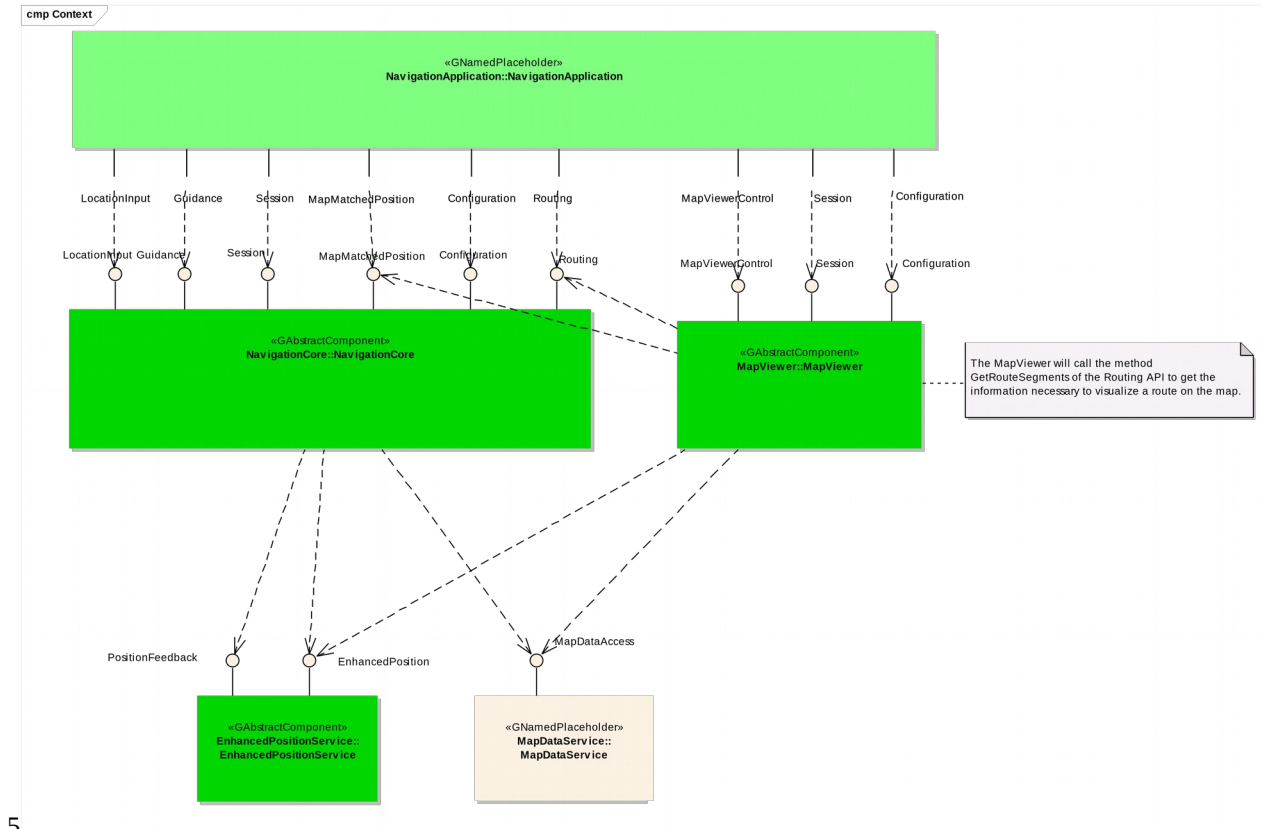
<i>Term</i>	<i>Description</i>
TargetPoint	Point the camera looks at. If the map viewer is set to follow the car position, it coincides with the vehicle position.

14 Architecture

24.1 Interfaces



3.4.2 Interaction with other Components



5 API

5.1 Git Repository

The MapViewer interfaces can be found in the GENIVI Git repository at:

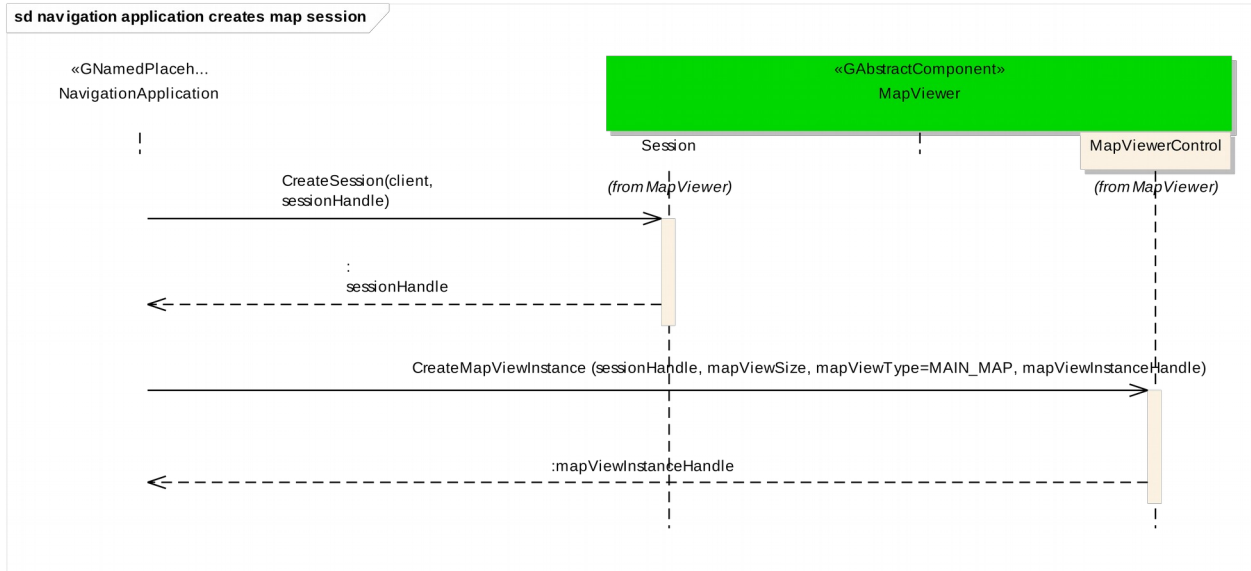
<https://github.com/GENIVI/navigation/tree/master/api/franca/navigation/mapviewer>

5.2 Sequence Diagrams

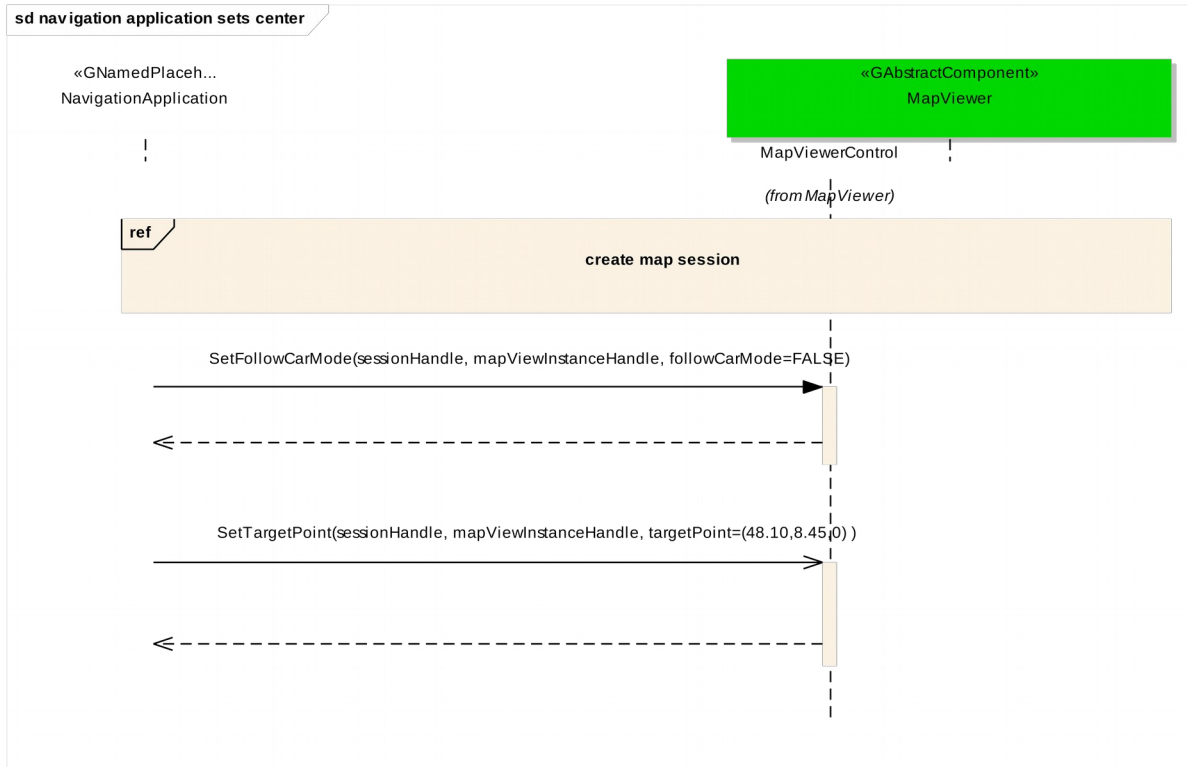
5.2.1 navigation application browses map



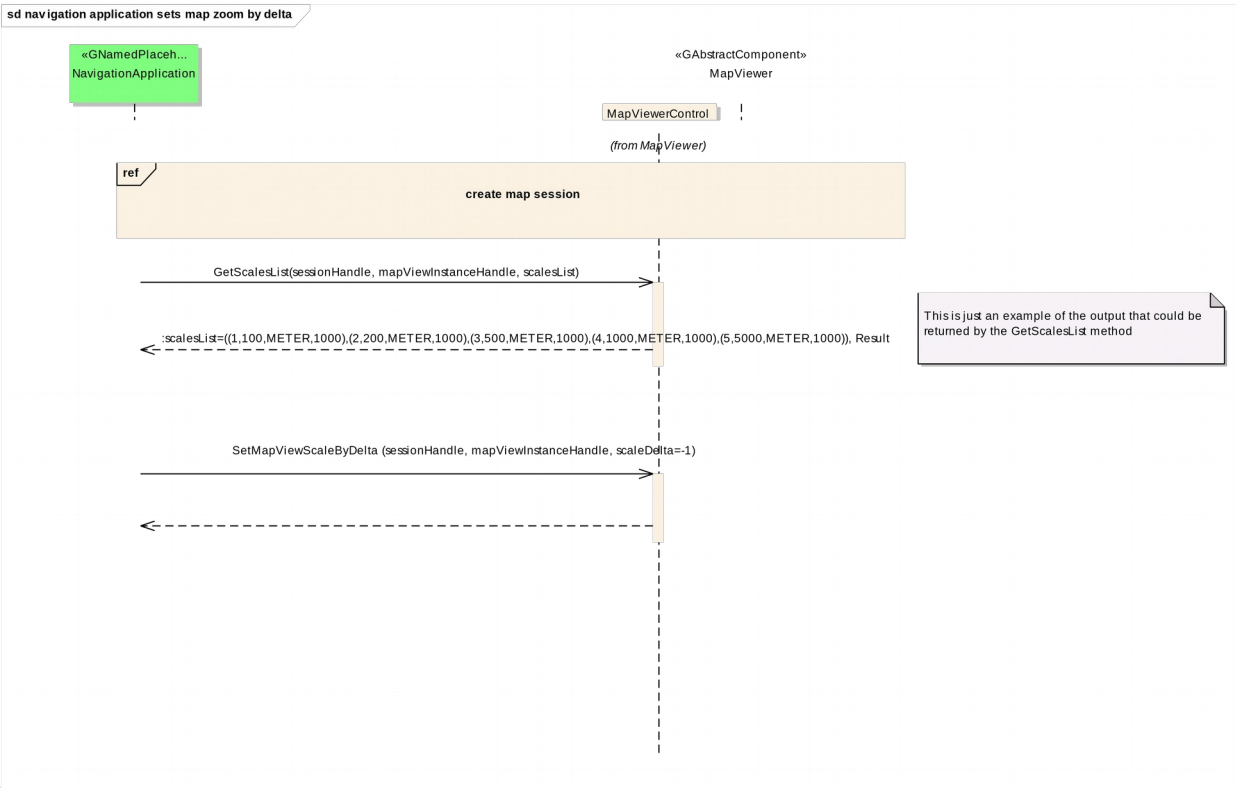
5.2.2 navigation application creates map session



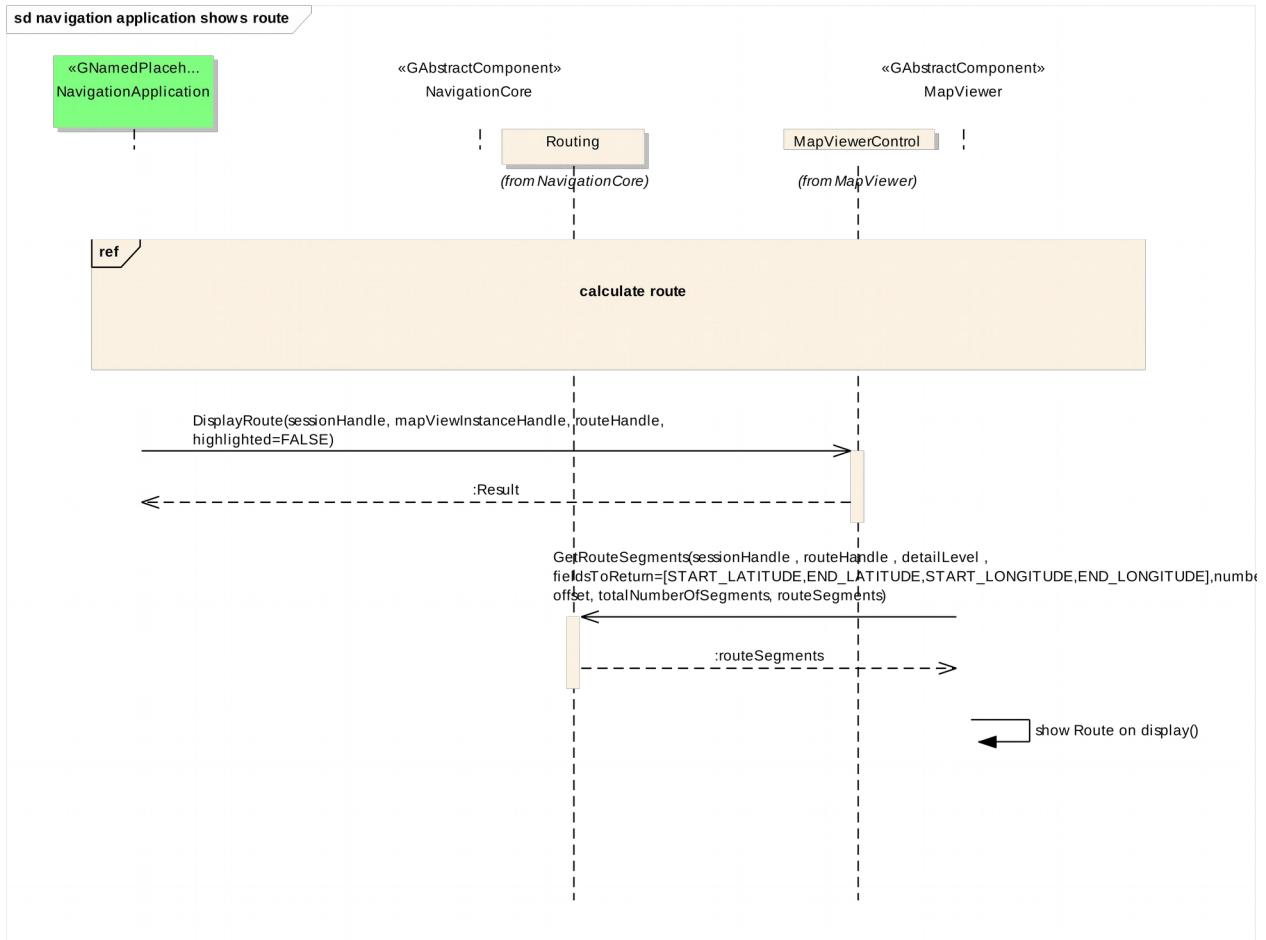
2.5.2.3 navigation application sets center



5.2.4 navigation application sets map zoom by delta



5.2.5 navigation application shows route



15.3 Interfaces

25.4 The following pages describe the interfaces of the MapViewer API.

MapView

Generated by Doxygen 1.8.11

Contents

1	Namespace Documentation	1
1.1	org Module Reference	1
1.2	org::genivi Module Reference	2
1.3	org::genivi::navigation Module Reference	2
1.4	org::genivi::navigation::mapviewer Module Reference	2
2	Class Documentation	2
2.1	org::genivi::navigation::mapviewer::MapViewControl::AnchorPoint Struct Reference	2
2.1.1	Member Data Documentation	2
2.2	org::genivi::navigation::mapviewer::MapViewControl::CategoryVisibility Struct Reference	3
2.2.1	Member Data Documentation	3
2.3	org::genivi::navigation::mapviewer::Configuration Interface Reference	3
2.3.1	Detailed Description	4
2.3.2	Member Typedef Documentation	4
2.3.3	Member Enumeration Documentation	4
2.3.4	Member Function Documentation	5
2.3.5	Member Data Documentation	6
2.4	org::genivi::navigation::mapviewer::Configuration_client Interface Reference	6
2.4.1	Member Function Documentation	6
2.5	org::genivi::navigation::mapviewer::MapViewControl::CustomElement Struct Reference	7
2.5.1	Member Data Documentation	7
2.6	org::genivi::navigation::mapviewer::MapViewControl::Dimension Struct Reference	7
2.6.1	Member Data Documentation	7
2.7	org::genivi::navigation::mapviewer::MapViewControl::DisplayedRoute Struct Reference	7
2.7.1	Member Data Documentation	8
2.8	org::genivi::navigation::mapviewer::MapViewControl::ElementValue Union Reference	8
2.8.1	Member Data Documentation	8
2.9	org::genivi::navigation::mapviewer::MapViewControl::MapScale Struct Reference	8
2.9.1	Member Data Documentation	9

2.10	org::genivi::navigation::mapviewer::MapViewControl::MapViewArea Struct Reference	9
2.10.1	Member Data Documentation	9
2.11	org::genivi::navigation::mapviewer::MapViewControl Interface Reference	9
2.11.1	Detailed Description	12
2.11.2	Member Enumeration Documentation	13
2.11.3	Member Function Documentation	16
2.11.4	Member Data Documentation	23
2.12	org::genivi::navigation::mapviewer::MapViewControl_client Interface Reference	24
2.12.1	Member Function Documentation	24
2.13	org::genivi::navigation::mapviewer::MapViewControl::Pixel Struct Reference	26
2.13.1	Member Data Documentation	26
2.14	org::genivi::navigation::mapviewer::MapViewControl::SelectedMapElement Struct Reference	26
2.14.1	Member Data Documentation	26
2.15	org::genivi::navigation::mapviewer::Session Interface Reference	27
2.15.1	Detailed Description	27
2.15.2	Member Function Documentation	27
2.16	org::genivi::navigation::mapviewer::Session_client Interface Reference	27
2.16.1	Member Function Documentation	28
2.17	org::genivi::navigation::mapviewer::MapViewControl::WayPointValue Struct Reference	28
2.17.1	Member Data Documentation	28
3	File Documentation	28
3.1	Configuration.fidl File Reference	28
3.2	MapViewControl.fidl File Reference	29
3.3	Session.fidl File Reference	29
Index		31

1 Namespace Documentation

1.1 org Module Reference

Modules

- [genivi](#)

1.2 org::genivi Module Reference

Modules

- [navigation](#)

1.3 org::genivi::navigation Module Reference

Modules

- module [mapviewer](#)

1.4 org::genivi::navigation::mapviewer Module Reference

Classes

- interface [Configuration](#)
- interface [Configuration_client](#)
- interface [MapViewControl](#)
- interface [MapViewControl_client](#)
- interface [Session](#)
- interface [Session_client](#)

2 Class Documentation

2.1 org::genivi::navigation::mapviewer::MapViewControl::AnchorPoint Struct Reference

Public Attributes

- [Int16 x](#)
- [Int16 y](#)

2.1.1 Member Data Documentation

2.1.1.1 [Int16 org::genivi::navigation::mapviewer::MapViewControl::AnchorPoint::x](#)

2.1.1.2 [Int16 org::genivi::navigation::mapviewer::MapViewControl::AnchorPoint::y](#)

The documentation for this struct was generated from the following file:

- [MapViewControl.fidl](#)

2.2 org::genivi::navigation::mapviewer::MapViewControl::CategoryVisibility Struct Reference

Public Attributes

- CategoryID [poiCategoryId](#)
- Boolean [visible](#)
- UInt8 [minScaleID](#)
- UInt8 [maxScaleID](#)

2.2.1 Member Data Documentation

2.2.1.1 UInt8 org::genivi::navigation::mapviewer::MapViewControl::CategoryVisibility::maxScaleID

2.2.1.2 UInt8 org::genivi::navigation::mapviewer::MapViewControl::CategoryVisibility::minScaleID

2.2.1.3 CategoryID org::genivi::navigation::mapviewer::MapViewControl::CategoryVisibility::poiCategoryId

2.2.1.4 Boolean org::genivi::navigation::mapviewer::MapViewControl::CategoryVisibility::visible

The documentation for this struct was generated from the following file:

- [MapViewControl.fidl](#)

2.3 org::genivi::navigation::mapviewer::Configuration Interface Reference

Public Types

- enum [Settings](#) : BasicEnum { [UNITS_OF_MEASUREMENT](#) = 48, [LOCALE](#) = 37, [TIME_FORMAT](#) = 3, [COORDINATES_FORMAT](#) = 6 }
- enum [UnitsOfMeasurementAttribute](#) : BasicEnum { [LENGTH](#) = 49 }
- enum [UnitsOfMeasurementValue](#) { [METER](#) = 50, [MILE](#) = 51, [KM](#) = 52, [YARD](#) = 53, [FOOT](#) = 54 }
- enum [CoordinatesFormat](#) { [INVALID](#) = 0, [DEGREES](#) = 7, [MINUTES](#) = 8, [SECONDS](#) = 9 }
- typedef [UnitsOfMeasurementValue\[\]](#) [UnitsOfMeasurementListValue](#)

Public Member Functions

- void [getVersion](#) (out Version version)
- void [setLocale](#) (in String languageCode, in String countryCode, in String scriptCode)
- void [getLocale](#) (out String languageCode, out String countryCode, out String scriptCode)
- void [getSupportedLocales](#) (out Locale localeList)
- void [setTimeFormat](#) (in TimeFormat format)
- void [getTimeFormat](#) (out TimeFormat format)
- void [getSupportedTimeFormats](#) (out TimeFormat timeFormatList)
- void [setCoordinatesFormat](#) (in [CoordinatesFormat](#) coordinatesFormat)
- void [getCoordinatesFormat](#) (out [CoordinatesFormat](#) coordinatesFormat)
- void [getSupportedCoordinatesFormat](#) (out [CoordinatesFormat](#) coordinatesFormatList)
- void [setUnitsOfMeasurement](#) (in [UnitsOfMeasurement](#) unitsOfMeasurement)
- void [getUnitsOfMeasurement](#) (out [UnitsOfMeasurement](#) unitsOfMeasurement)
- void [getSupportedUnitsOfMeasurement](#) (out [UnitsOfMeasurementList](#) unitsOfMeasurementList)

Public Attributes

- map_UnitsOfMeasurement [UnitsOfMeasurementAttribute =>UnitsOfMeasurementValue](#)
- map_UnitsOfMeasurementList [UnitsOfMeasurementAttribute =>UnitsOfMeasurementListValue](#)

2.3.1 Detailed Description

#comment : This interface offers methods that implement the map viewer configuration functionality of a navigation system.

2.3.2 Member Typedef Documentation

2.3.2.1 typedef [UnitsOfMeasurementValue \[\] org::genivi::navigation::mapviewer::Configuration::UnitsOfMeasurementListValue](#)

2.3.3 Member Enumeration Documentation

2.3.3.1 enum [org::genivi::navigation::mapviewer::Configuration::CoordinatesFormat](#)

Enumerator

INVALID
DEGREES
MINUTES
SECONDS

2.3.3.2 enum [org::genivi::navigation::mapviewer::Configuration::Settings](#) : BasicEnum

Enumerator

UNITS_OF_MEASUREMENT
LOCALE
TIME_FORMAT
COORDINATES_FORMAT

2.3.3.3 enum [org::genivi::navigation::mapviewer::Configuration::UnitsOfMeasurementAttribute](#) : BasicEnum

Enumerator

LENGTH

2.3.3.4 enum [org::genivi::navigation::mapviewer::Configuration::UnitsOfMeasurementValue](#)

Enumerator

METER
MILE
KM
YARD
FOOT

2.3.4 Member Function Documentation

2.3.4.1 void org::genivi::navigation::mapviewer::Configuration::getCoordinatesFormat (out CoordinatesFormat *coordinatesFormat*)

#comment : Get the coordinates format .

2.3.4.2 void org::genivi::navigation::mapviewer::Configuration::getLocale (out String *languageCode*, out String *countryCode*, out String *scriptCode*)

#comment : Get the current language set .

2.3.4.3 void org::genivi::navigation::mapviewer::Configuration::getSupportedCoordinatesFormat (out CoordinatesFormat *coordinatesFormatList*)

#comment : Get the supported set of coordinates format .

2.3.4.4 void org::genivi::navigation::mapviewer::Configuration::getSupportedLocales (out Locale *localeList*)

#comment : Get the supported set of locales .

2.3.4.5 void org::genivi::navigation::mapviewer::Configuration::getSupportedTimeFormats (out TimeFormat *timeFormatList*)

#comment : Get the supported set of time format .

2.3.4.6 void org::genivi::navigation::mapviewer::Configuration::getSupportedUnitsOfMeasurement (out UnitsOfMeasurementList *unitsOfMeasurementList*)

#comment : Get the supported set of units of measurement .

2.3.4.7 void org::genivi::navigation::mapviewer::Configuration::getTimeFormat (out TimeFormat *format*)

#comment : Get the current time format .

2.3.4.8 void org::genivi::navigation::mapviewer::Configuration::getUnitsOfMeasurement (out UnitsOfMeasurement *unitsOfMeasurement*)

#comment : Get the units of measurement .

2.3.4.9 void org::genivi::navigation::mapviewer::Configuration::getVersion (out Version *version*)

#comment : This method returns the API version .

2.3.4.10 void org::genivi::navigation::mapviewer::Configuration::setCoordinatesFormat (in CoordinatesFormat *coordinatesFormat*)

#comment : Set the coordinates format.

2.3.4.11 void org::genivi::navigation::mapviewer::Configuration::setLocale (in String *languageCode*, in String *countryCode*, in String *scriptCode*)

#comment : Set the current language set. If the language is not supported, the default details will be returned in the native language.

2.3.4.12 void org::genivi::navigation::mapviewer::Configuration::setTimeFormat (in TimeFormat *format*)

#comment : Set the time format.

2.3.4.13 void org::genivi::navigation::mapviewer::Configuration::setUnitsOfMeasurement (in UnitsOfMeasurement *unitsOfMeasurement*)

#comment : Set the units of measurement .

2.3.5 Member Data Documentation

2.3.5.1 map_UnitsOfMeasurement org::genivi::navigation::mapviewer::Configuration::UnitsOfMeasurement↔
Attribute =>UnitsOfMeasurementValue

2.3.5.2 map_UnitsOfMeasurementList org::genivi::navigation::mapviewer::Configuration::UnitsOf↔
MeasurementAttribute =>UnitsOfMeasurementListValue

The documentation for this interface was generated from the following file:

- [Configuration.fidl](#)

2.4 org::genivi::navigation::mapviewer::Configuration_client Interface Reference

Public Member Functions

- void [configurationChanged](#) (in Settings *changedSettings*)

2.4.1 Member Function Documentation

2.4.1.1 void org::genivi::navigation::mapviewer::Configuration_client::configurationChanged (in Settings *changedSettings*)

broadcast #comment : ConfigurationChanged = This signal is sent to the clients when one or more configuration settings changes

The documentation for this interface was generated from the following file:

- [Configuration.fidl](#)

2.5 org::genivi::navigation::mapviewer::MapViewControl::CustomElement Struct Reference

Public Attributes

- String [name](#)
- String [iconUri](#)
- Coordinate2D [coordinate](#)
- [AnchorPoint](#) [elem4](#)

2.5.1 Member Data Documentation

2.5.1.1 [Coordinate2D](#) org::genivi::navigation::mapviewer::MapViewControl::CustomElement::coordinate

2.5.1.2 [AnchorPoint](#) org::genivi::navigation::mapviewer::MapViewControl::CustomElement::elem4

2.5.1.3 [String](#) org::genivi::navigation::mapviewer::MapViewControl::CustomElement::iconUri

2.5.1.4 [String](#) org::genivi::navigation::mapviewer::MapViewControl::CustomElement::name

The documentation for this struct was generated from the following file:

- [MapViewControl.fidl](#)

2.6 org::genivi::navigation::mapviewer::MapViewControl::Dimension Struct Reference

Public Attributes

- UInt16 [horizontalSize](#)
- UInt16 [verticalSize](#)

2.6.1 Member Data Documentation

2.6.1.1 [UInt16](#) org::genivi::navigation::mapviewer::MapViewControl::Dimension::horizontalSize

2.6.1.2 [UInt16](#) org::genivi::navigation::mapviewer::MapViewControl::Dimension::verticalSize

The documentation for this struct was generated from the following file:

- [MapViewControl.fidl](#)

2.7 org::genivi::navigation::mapviewer::MapViewControl::DisplayedRoute Struct Reference

Public Attributes

- [Handle](#) [routeHandle](#)
- Boolean [highlighted](#)

2.7.1 Member Data Documentation

2.7.1.1 Boolean `org::genivi::navigation::mapviewer::MapViewControl::DisplayedRoute::highlighted`

2.7.1.2 Handle `org::genivi::navigation::mapviewer::MapViewControl::DisplayedRoute::routeHandle`

The documentation for this struct was generated from the following file:

- [MapViewControl.fidl](#)

2.8 `org::genivi::navigation::mapviewer::MapViewControl::ElementValue` Union Reference

Public Attributes

- Int32 `trafficIncident`
- Handle `handle`
- CustomElement `element`
- WayPointValue `wayPointValue`

2.8.1 Member Data Documentation

2.8.1.1 CustomElement `org::genivi::navigation::mapviewer::MapViewControl::ElementValue::element`

2.8.1.2 Handle `org::genivi::navigation::mapviewer::MapViewControl::ElementValue::handle`

2.8.1.3 Int32 `org::genivi::navigation::mapviewer::MapViewControl::ElementValue::trafficIncident`

2.8.1.4 WayPointValue `org::genivi::navigation::mapviewer::MapViewControl::ElementValue::wayPointValue`

The documentation for this union was generated from the following file:

- [MapViewControl.fidl](#)

2.9 `org::genivi::navigation::mapviewer::MapViewControl::MapScale` Struct Reference

Public Attributes

- UInt16 `scaleId`
- UInt16 `scaleValue`
- MapScaleUnit `unit`
- UInt32 `millimetersPerPixel`

2.9.1 Member Data Documentation

2.9.1.1 UInt32 org::genivi::navigation::mapviewer::MapViewControl::MapScale::millimetersPerPixel

2.9.1.2 UInt16 org::genivi::navigation::mapviewer::MapViewControl::MapScale::scaleId

2.9.1.3 UInt16 org::genivi::navigation::mapviewer::MapViewControl::MapScale::scaleValue

2.9.1.4 **MapScaleUnit** org::genivi::navigation::mapviewer::MapViewControl::MapScale::unit

The documentation for this struct was generated from the following file:

- [MapViewControl.fidl](#)

2.10 org::genivi::navigation::mapviewer::MapViewControl::MapViewArea Struct Reference

Public Attributes

- Double [left](#)
- Double [right](#)
- Double [top](#)
- Double [bottom](#)

2.10.1 Member Data Documentation

2.10.1.1 Double org::genivi::navigation::mapviewer::MapViewControl::MapViewArea::bottom

2.10.1.2 Double org::genivi::navigation::mapviewer::MapViewControl::MapViewArea::left

2.10.1.3 Double org::genivi::navigation::mapviewer::MapViewControl::MapViewArea::right

2.10.1.4 Double org::genivi::navigation::mapviewer::MapViewControl::MapViewArea::top

The documentation for this struct was generated from the following file:

- [MapViewControl.fidl](#)

2.11 org::genivi::navigation::mapviewer::MapViewControl Interface Reference

Classes

- struct [AnchorPoint](#)
- struct [CategoryVisibility](#)
- struct [CustomElement](#)
- struct [Dimension](#)
- struct [DisplayedRoute](#)
- union [ElementValue](#)
- struct [MapScale](#)
- struct [MapViewArea](#)
- struct [Pixel](#)
- struct [SelectedMapElement](#)
- struct [WayPointValue](#)

Public Types

- enum `MapViewType` : BasicEnum { `MAIN_MAP` = 16, `SPLIT_SCREEN` = 17, `GUIDING_MAP` = 18 }
- enum `MapScaleMode` : BasicEnum { `AUTOMATIC` = 272, `MANUAL` = 273, `HYBRID` = 274 }
- enum `MapPerspective` : BasicEnum { `PERSPECTIVE_2D` = 32, `PERSPECTIVE_3D` = 33 }
- enum `MapObject` : BasicEnum {
`BUILDINGS` = 128, `TERRAIN` = 129, `DET_POI`, `DET_TTI`,
`DET_ONE_WAY_STREET_ARROW`, `DET_CITY_NAME`, `DET_ROAD_NAME`, `DET_MOTORWAY_EXIT`↵
`_MARKER`,
`DET_TRAFFIC_LIGHT`, `DET_TRAFFIC_LIGHTS_ALONG_ROUTE`, `DET_ROAD_ICON`, `DET_DTM`,
`DET_LANDMARKS_3D`, `DET_FAVORITES`, `DET_ROUTE_BLOCKING`, `DET_ROAD`,
`DET_POLYGON`, `DET_DESTINATION`, `DET_MANOEUVRE_MARKER`, `DET_LANE_GUIDANCE_MARK`↵
`ER`,
`DET_ROUTE`, `DET_MANOEUVRE_ARROW`, `DET_TREKKING_TOUR`, `DET_TTI_EDGE_HIGHLIGHTING`,
`DET_CITY_MARKER`, `DET_VEHICLE`, `DET_POLYGON_NAME`, `DET_OFF_ROAD_ROUTE`,
`DET_TTI_ARROW`, `DET_POI_NAME`, `DET_RASTER_MAP`, `DET_BREAD_CRUMB_TRAIL`,
`DET_EDGE_HIGHLIGHTING`, `DET_DIRECTION_ARROW`, `DET_CITY_BUILDINGS`, `DET_FPS_DISPLAY`,
`DET_CROSSHAIR`, `DET_DEVDROP_BANNER`, `DET_FRAME_AROUND_MAP`, `DET_CORONA`,
`DET_WATEREFFECT`, `DET_TREES`, `DET_RAIN`, `DET_CITYMODEL_ROUTE_TRANSPARENCY`,
`DET_ROUTE_DESTINATION`, `DET_RANGE_DISPLAY`, `DET_POI_BRANDS`, `DET_WEATHER_MARKER`,
`DET_WEATHER_OVERLAY`, `DET_WAYPOINT_ROUTE`, `DET_WAYPOINT_ROUTE_MARKER`, `DET_ST`↵
`ENCIL` }
- enum `PanAction` : BasicEnum { `PAN_START` = 256, `PAN_TO` = 257, `PAN_END` = 258 }
- enum `Visibility` : BasicEnum { `VISIBLE` = 67, `INVISIBLE` = 68, `FROZEN` = 69 }
- enum `Level` : BasicEnum {
`LEVEL_1` = 80, `LEVEL_2` = 81, `LEVEL_3` = 82, `LEVEL_4` = 83,
`LEVEL_5` = 84 }
- enum `HeadingType` : BasicEnum { `CONSTANT_ANGLE` = 112, `TRACK_UP` = 113, `TOWARDS_TARGET` = 114 }
- enum `MapTheme` : BasicEnum {
`THEME_1` = 96, `THEME_2` = 97, `THEME_3` = 98, `THEME_I_CLASSIC_DAY`,
`THEME_I_CLASSIC_NIGHT`, `THEME_I_CLASSIC_TRAFFIC_DAY`, `THEME_I_CLASSIC_TRAFFIC_NIG`↵
`HT`, `THEME_I_ALTERNATIVE_DAY`,
`THEME_I_ALTERNATIVE_NIGHT`, `THEME_I_ALTERNATIVE_TRAFFIC_DAY`, `THEME_I_ALTERNATIV`↵
`E_TRAFFIC_NIGHT`, `THEME_I_GUIDING` }
- enum `MapScaleUnit` : BasicEnum {
`METER` = 50, `MILE` = 51, `KM` = 52, `YARD` = 53,
`FOOT` = 54 }
- enum `MapScaleType` : BasicEnum { `MIN` = 64, `MAX` = 65, `MID` = 66 }
- enum `SelectableMapType` : BasicEnum {
`MET_POI` = 2, `MET_POLYGON` = 3, `MET_EDGE` = 4, `MET_ROAD` = 5,
`MET_ROAD_ICON` = 6, `MET_TTI_ICON` = 7, `MET_TTI_EDGE` = 8, `MET_CITY_MARKER` = 9,
`MET_ROUTE` = 10, `MET_TREKKING_ROUTE` = 11, `MET_POSITION` = 12, `MET_LANDMARK` = 13,
`MET_DESTINATION` = 14, `MET_FAVORITE` = 15, `MET_PICTURE` = 16, `MET_GENERIC_MARKER` = 17,
`CUSTOM_ELEMENT` = 288, `CURRENT_POSITION` = 289, `WAYPOINT` = 290, `POI` = 291,
`TRAFFIC_INCIDENT` = 292, `ROUTE` = 293, `GEOCOORDINATES` = 294 }

Public Member Functions

- void `getVersion` (out Version version)
- void `createMapViewInstance` (in Handle sessionHandle, in Dimension mapViewSize, in MapViewType map↵
 ViewType, out Handle mapViewInstanceHandle)
- void `releaseMapViewInstance` (in Handle sessionHandle, in Handle mapViewInstanceHandle)
- void `getMapViewType` (in Handle mapViewInstanceHandle, out MapViewType mapViewType)
- void `getSupportedMapViewTypes` (out MapViewType mapViewTypeList)

- void [setTargetPoint](#) (in [Handle](#) sessionHandle, in [Handle](#) mapViewInstanceHandle, in [Coordinate3D](#) targetPoint)
- void [getTargetPoint](#) (in [Handle](#) mapViewInstanceHandle, out [Coordinate3D](#) targetPoint)
- void [setFollowCarMode](#) (in [Handle](#) sessionHandle, in [Handle](#) mapViewInstanceHandle, in [Boolean](#) followCarMode)
- void [getFollowCarMode](#) (in [Handle](#) mapViewInstanceHandle, out [Boolean](#) followCarMode)
- void [setCameraPosition](#) (in [Handle](#) sessionHandle, in [Handle](#) mapViewInstanceHandle, in [Coordinate3D](#) position)
- void [getCameraPosition](#) (in [Handle](#) mapViewInstanceHandle, out [Coordinate3D](#) position)
- void [setCameraHeadingAngle](#) (in [Handle](#) sessionHandle, in [Handle](#) mapViewInstanceHandle, in [Int32](#) heading)
- void [setCameraHeadingToTarget](#) (in [Handle](#) sessionHandle, in [Handle](#) mapViewInstanceHandle, in [Coordinate2D](#) target)
- void [setCameraHeadingTrackUp](#) (in [Handle](#) sessionHandle, in [Handle](#) mapViewInstanceHandle)
- void [getCameraHeading](#) (in [Handle](#) mapViewInstanceHandle, out [HeadingType](#) headingType, out [Int32](#) headingAngle, out [Coordinate2D](#) target)
- void [setCameraTiltAngle](#) (in [Handle](#) sessionHandle, in [Handle](#) mapViewInstanceHandle, in [Int32](#) tilt)
- void [getCameraTiltAngle](#) (in [Handle](#) mapViewInstanceHandle, out [Int32](#) tilt)
- void [setCameraRollAngle](#) (in [Handle](#) sessionHandle, in [Handle](#) mapViewInstanceHandle, in [Int32](#) roll)
- void [getCameraRollAngle](#) (in [Handle](#) mapViewInstanceHandle, out [Int32](#) roll)
- void [setCameraDistanceFromTargetPoint](#) (in [Handle](#) sessionHandle, in [Handle](#) mapViewInstanceHandle, in [UInt32](#) distance)
- void [getCameraDistanceFromTargetPoint](#) (in [Handle](#) mapViewInstanceHandle, out [UInt32](#) distance)
- void [setMapViewScaleMode](#) (in [Handle](#) sessionHandle, in [Handle](#) mapViewInstanceHandle, in [MapScaleMode](#) scaleMode)
- void [getMapViewScaleMode](#) (in [Handle](#) mapViewInstanceHandle, out [MapScaleMode](#) scaleMode)
- void [getSupportedMapViewScaleModes](#) (in [Handle](#) mapViewInstanceHandle, out [MapScaleMode](#) scaleModeList)
- void [setCameraHeight](#) (in [Handle](#) sessionHandle, in [Handle](#) mapViewInstanceHandle, in [UInt32](#) height)
- void [getCameraHeight](#) (in [Handle](#) mapViewInstanceHandle, out [UInt32](#) height)
- void [setMapViewPerspective](#) (in [Handle](#) sessionHandle, in [Handle](#) mapViewInstanceHandle, in [MapPerspective](#) perspective)
- void [getMapViewPerspective](#) (in [Handle](#) mapViewInstanceHandle, out [MapPerspective](#) perspective)
- void [getSupportedMapViewPerspectives](#) (out [MapPerspective](#) perspectiveList)
- void [setMapViewObjectVisibility](#) (in [Handle](#) sessionHandle, in [Handle](#) mapViewInstanceHandle, in [MapObjectVisibility](#) objectVisibilityList)
- void [getMapViewObjectVisibility](#) (in [Handle](#) mapViewInstanceHandle, out [MapObjectVisibility](#) objectVisibilityList)
- void [getSupportedMapViewObjectVisibilities](#) (in [Handle](#) mapViewInstanceHandle, out [MapObject](#) objectVisibilityList)
- void [getScaleList](#) (in [Handle](#) mapViewInstanceHandle, out [MapScale](#) scaleList)
- void [setMapViewScale](#) (in [Handle](#) sessionHandle, in [Handle](#) mapViewInstanceHandle, in [UInt16](#) scaleID)
- void [setMapViewScaleByDelta](#) (in [Handle](#) sessionHandle, in [Handle](#) mapViewInstanceHandle, in [Int16](#) scaleDelta)
- void [setMapViewScaleByMetersPerPixel](#) (in [Handle](#) sessionHandle, in [Handle](#) mapViewInstanceHandle, in [Double](#) metersPerPixel)
- void [getMapViewScale](#) (in [Handle](#) mapViewInstanceHandle, out [UInt8](#) scaleID, out [MapScaleType](#) isMinMax)
- void [setMapViewBoundingBox](#) (in [Handle](#) sessionHandle, in [Handle](#) mapViewInstanceHandle, in [Rectangle](#) boundingBox)
- void [getMapViewBoundingBox](#) (in [Handle](#) mapViewInstanceHandle, out [Rectangle](#) boundingBox)
- void [setMapViewSaveArea](#) (in [Handle](#) sessionHandle, in [Handle](#) mapViewInstanceHandle, in [MapViewArea](#) saveArea)
- void [getMapViewSaveArea](#) (in [Handle](#) mapViewInstanceHandle, out [MapViewArea](#) saveArea)
- void [setMapViewPan](#) (in [Handle](#) sessionHandle, in [Handle](#) mapViewInstanceHandle, in [PanAction](#) panningAction, in [Pixel](#) pixelCoordinates)

- void [getMapViewPan](#) (in [Handle](#) mapViewInstanceHandle, in [PanAction](#) valueToReturn, out [Pixel](#) pixel↔Coordinates)
- void [setMapViewRotation](#) (in [Handle](#) sessionHandle, in [Handle](#) mapViewInstanceHandle, in Int32 rotation↔Angle, in Int32 rotationAnglePerSecond)
- void [getMapViewRotation](#) (in [Handle](#) mapViewInstanceHandle, out Int32 rotationAngle, out Int32 rotation↔AnglePerFrame)
- void [setMapViewVisibilityMode](#) (in [Handle](#) sessionHandle, in [Handle](#) mapViewInstanceHandle, in [Visibility](#) visibilityMode)
- void [getMapViewVisibilityMode](#) (in [Handle](#) mapViewInstanceHandle, out [Visibility](#) visibilityMode)
- void [getSupportedMapViewVisibilityModes](#) (out [Visibility](#) visibilityModelList)
- void [setMapViewPerformanceLevel](#) (in [Handle](#) sessionHandle, in [Handle](#) mapViewInstanceHandle, in [Level](#) performanceLevel)
- void [getMapViewPerformanceLevel](#) (in [Handle](#) mapViewInstanceHandle, out [Level](#) performanceLevel)
- void [getSupportedMapViewPerformanceLevels](#) (out [Level](#) performanceLevelList)
- void [displayRoute](#) (in [Handle](#) sessionHandle, in [Handle](#) mapViewInstanceHandle, in [Handle](#) routeHandle, in Boolean highlighted)
- void [hideRoute](#) (in [Handle](#) sessionHandle, in [Handle](#) mapViewInstanceHandle, in [Handle](#) routeHandle)
- void [getDisplayedRoutes](#) (in [Handle](#) mapViewInstanceHandle, out [DisplayedRoute](#) displayedRoutes)
- void [getPoiCategoriesVisible](#) (in [Handle](#) mapViewInstanceHandle, out CategoryID poiCategoryIds)
- void [setPoiCategoriesVisible](#) (in [Handle](#) sessionHandle, in [Handle](#) mapViewInstanceHandle, in CategoryID poiCategoryIds)
- void [setPoiCategoriesVisibleWithinLimits](#) (in [Handle](#) sessionHandle, in [Handle](#) mapViewInstanceHandle, in CategoryID poiCategoryIds, in UInt8 minScaleID, in UInt8 maxScaleID)
- void [setPoiCategoriesNotVisible](#) (in [Handle](#) sessionHandle, in [Handle](#) mapViewInstanceHandle, in CategoryID poiCategoryIds)
- void [setTrafficIncidentsVisibility](#) (in [Handle](#) sessionHandle, in [Handle](#) mapViewInstanceHandle, in Boolean visible)
- void [setMapViewTheme](#) (in [Handle](#) sessionHandle, in [Handle](#) mapViewInstanceHandle, in [MapTheme](#) mapView↔ViewTheme)
- void [getMapViewTheme](#) (in [Handle](#) mapViewInstanceHandle, out [MapTheme](#) mapViewTheme)
- void [getSupportedMapViewThemes](#) (out [MapTheme](#) mapViewThemeList)
- void [convertPixelCoordsToGeoCoords](#) (in [Handle](#) sessionHandle, in [Handle](#) mapViewInstanceHandle, in [Pixel](#) pixelCoordinates, out Coordinate2D geoCoordinates)
- void [convertGeoCoordsToPixelCoords](#) (in [Handle](#) sessionHandle, in [Handle](#) mapViewInstanceHandle, in Coordinate2D geoCoordinates, out [Pixel](#) pixelCoordinates)
- void [displayCustomElements](#) (in [Handle](#) sessionHandle, in [Handle](#) mapViewInstanceHandle, in [Custom↔Element](#) customElements, out [Handle](#) customElementHandles)
- void [hideCustomElements](#) (in [Handle](#) sessionHandle, in [Handle](#) mapViewInstanceHandle, in [Handle](#) customElementHandles)
- void [getDisplayedCustomElements](#) (in [Handle](#) mapViewInstanceHandle, out CustomElementDict custom↔Elements)
- void [selectElementsOnMap](#) (in [Handle](#) mapViewInstanceHandle, in [Pixel](#) pixelCoordinate, in [Selectable↔MapType](#) selectableTypes, in UInt16 numberOfSelectedElements, out [SelectedMapElement](#) selected↔Elements)

Public Attributes

- map_MapObjectVisibility [MapObject](#) => Boolean
- map_CustomElementDict [Handle](#) => [CustomElement](#)

2.11.1 Detailed Description

#comment : [MapViewControl](#) = This interface offers functions to control the MapViewer

2.11.2 Member Enumeration Documentation

2.11.2.1 enum org::genivi::navigation::mapviewer::MapViewControl::HeadingType : BasicEnum

Enumerator

CONSTANT_ANGLE
TRACK_UP
TOWARDS_TARGET

2.11.2.2 enum org::genivi::navigation::mapviewer::MapViewControl::Level : BasicEnum

Enumerator

LEVEL_1
LEVEL_2
LEVEL_3
LEVEL_4
LEVEL_5

2.11.2.3 enum org::genivi::navigation::mapviewer::MapViewControl::MapObject : BasicEnum

Enumerator

BUILDINGS
TERRAIN
DET_POI
DET_TTI
DET_ONE_WAY_STREET_ARROW
DET_CITY_NAME
DET_ROAD_NAME
DET_MOTORWAY_EXIT_MARKER
DET_TRAFFIC_LIGHT
DET_TRAFFIC_LIGHTS_ALONG_ROUTE
DET_ROAD_ICON
DET_DTM
DET_LANDMARKS_3D
DET_FAVORITES
DET_ROUTE_BLOCKING
DET_ROAD
DET_POLYGON
DET_DESTINATION
DET_MANOEUVRE_MARKER
DET_LANE_GUIDANCE_MARKER
DET_ROUTE
DET_MANOEUVRE_ARROW
DET_TREKKING_TOUR
DET_TTI_EDGE_HIGHLIGHTING

DET_CITY_MARKER
DET_VEHICLE
DET_POLYGON_NAME
DET_OFF_ROAD_ROUTE
DET_TTI_ARROW
DET_POI_NAME
DET_RASTER_MAP
DET_BREAD_CRUMB_TRAIL
DET_EDGE_HIGHLIGHTING
DET_DIRECTION_ARROW
DET_CITY_BUILDINGS
DET_FPS_DISPLAY
DET_CROSSHAIR
DET_DEVDROP_BANNER
DET_FRAME_AROUND_MAP
DET_CORONA
DET_WATEREFFECT
DET_TREES
DET_RAIN
DET_CITYMODEL_ROUTE_TRANSPARENCY
DET_ROUTE_DESTINATION
DET_RANGE_DISPLAY
DET_POI_BRANDS
DET_WEATHER_MARKER
DET_WEATHER_OVERLAY
DET_WAYPOINT_ROUTE
DET_WAYPOINT_ROUTE_MARKER
DET_STENCIL

2.11.2.4 enum org::genivi::navigation::mapviewer::MapViewControl::MapPerspective : BasicEnum

Enumerator

PERSPECTIVE_2D
PERSPECTIVE_3D

2.11.2.5 enum org::genivi::navigation::mapviewer::MapViewControl::MapScaleMode : BasicEnum

Enumerator

AUTOMATIC
MANUAL
HYBRID

2.11.2.6 enum org::genivi::navigation::mapviewer::MapViewControl::MapScaleType : BasicEnum

Enumerator

MIN
MAX
MID

2.11.2.7 enum org::genivi::navigation::mapviewer::MapViewControl::MapScaleUnit : BasicEnum

Enumerator

METER
MILE
KM
YARD
FOOT

2.11.2.8 enum org::genivi::navigation::mapviewer::MapViewControl::MapTheme : BasicEnum

Enumerator

THEME_1
THEME_2
THEME_3
THEME_I_CLASSIC_DAY
THEME_I_CLASSIC_NIGHT
THEME_I_CLASSIC_TRAFFIC_DAY
THEME_I_CLASSIC_TRAFFIC_NIGHT
THEME_I_ALTERNATIVE_DAY
THEME_I_ALTERNATIVE_NIGHT
THEME_I_ALTERNATIVE_TRAFFIC_DAY
THEME_I_ALTERNATIVE_TRAFFIC_NIGHT
THEME_I_GUIDING

2.11.2.9 enum org::genivi::navigation::mapviewer::MapViewControl::MapViewType : BasicEnum

Enumerator

MAIN_MAP
SPLIT_SCREEN
GUIDING_MAP

2.11.2.10 enum org::genivi::navigation::mapviewer::MapViewControl::PanAction : BasicEnum

Enumerator

PAN_START
PAN_TO
PAN_END

2.11.2.11 enum org::genivi::navigation::mapviewer::MapViewControl::SelectableMapType : BasicEnum

Enumerator

MET_POI
MET_POLYGON
MET_EDGE
MET_ROAD
MET_ROAD_ICON
MET_TTI_ICON
MET_TTI_EDGE
MET_CITY_MARKER
MET_ROUTE
MET_TREKKING_ROUTE
MET_POSITION
MET_LANDMARK
MET_DESTINATION
MET_FAVORITE
MET_PICTURE
MET_GENERIC_MARKER
CUSTOM_ELEMENT
CURRENT_POSITION
WAYPOINT
POI
TRAFFIC_INCIDENT
ROUTE
GEOCOORDINATES

2.11.2.12 enum org::genivi::navigation::mapviewer::MapViewControl::Visibility : BasicEnum

Enumerator

VISIBLE
INVISIBLE
FROZEN

2.11.3 Member Function Documentation

2.11.3.1 void org::genivi::navigation::mapviewer::MapViewControl::convertGeoCoordsToPixelCoords (in Handle *sessionHandle*, in Handle *mapViewInstanceHandle*, in Coordinate2D *geoCoordinates*, out Pixel *pixelCoordinates*)

#comment : convertGeoCoordsToPixelCoords = This method converts geographical coordinates into pixel coordinates

2.11.3.2 void org::genivi::navigation::mapviewer::MapViewControl::convertPixelCoordsToGeoCoords (in Handle *sessionHandle*, in Handle *mapViewInstanceHandle*, in Pixel *pixelCoordinates*, out Coordinate2D *geoCoordinates*)

#comment : convertPixelCoordsToGeoCoords = This method converts pixel coordinates to geographical coordinates

2.11.3.3 void org::genivi::navigation::mapviewer::MapViewControl::createMapViewInstance (in Handle *sessionHandle*, in Dimension *mapViewSize*, in MapViewType *mapViewType*, out Handle *mapViewInstanceHandle*)

#comment : createMapViewInstance = This method creates a new map instance

2.11.3.4 void org::genivi::navigation::mapviewer::MapViewControl::displayCustomElements (in Handle *sessionHandle*, in Handle *mapViewInstanceHandle*, in CustomElement *customElements*, out Handle *customElementHandles*)

#comment : displayCustomElements = This method visualizes a set of custom elements on the map

2.11.3.5 void org::genivi::navigation::mapviewer::MapViewControl::displayRoute (in Handle *sessionHandle*, in Handle *mapViewInstanceHandle*, in Handle *routeHandle*, in Boolean *highlighted*)

#comment : displayRoute = This method visualizes one of the calculated routes

2.11.3.6 void org::genivi::navigation::mapviewer::MapViewControl::getCameraDistanceFromTargetPoint (in Handle *mapViewInstanceHandle*, out UInt32 *distance*)

#comment : getCameraDistanceFromTargetPoint = This method gets the mode and the camera distance from the target point

2.11.3.7 void org::genivi::navigation::mapviewer::MapViewControl::getCameraHeading (in Handle *mapViewInstanceHandle*, out HeadingType *headingType*, out Int32 *headingAngle*, out Coordinate2D *target*)

#comment : getCameraHeading = This method returns the current camera heading

2.11.3.8 void org::genivi::navigation::mapviewer::MapViewControl::getCameraHeight (in Handle *mapViewInstanceHandle*, out UInt32 *height*)

#comment : getCameraHeight = This method gets the camera height

2.11.3.9 void org::genivi::navigation::mapviewer::MapViewControl::getCameraPosition (in Handle *mapViewInstanceHandle*, out Coordinate3D *position*)

#comment : getCameraPosition = This method returns the coordinates of the point at which the camera is positioned

2.11.3.10 void org::genivi::navigation::mapviewer::MapViewControl::getCameraRollAngle (in Handle *mapViewInstanceHandle*, out Int32 *roll*)

#comment : getCameraRollAngle = This method returns the camera roll angle

2.11.3.11 void org::genivi::navigation::mapviewer::MapViewControl::getCameraTiltAngle (in Handle *mapViewInstanceHandle*, out Int32 *tilt*)

#comment : getCameraTiltAngle = This method returns the camera tilt angle

2.11.3.12 void org::genivi::navigation::mapviewer::MapViewControl::getDisplayedCustomElements (in Handle *mapViewInstanceHandle*, out CustomElementDict *customElements*)

#comment : getDisplayedCustomElements = This method retrieves the visualized custom elements on the map

2.11.3.13 void org::genivi::navigation::mapviewer::MapViewControl::getDisplayedRoutes (in Handle *mapViewInstanceHandle*, out DisplayedRoute *displayedRoutes*)

#comment : getDisplayedRoutes = This method returns a list of displayed routes

2.11.3.14 void org::genivi::navigation::mapviewer::MapViewControl::getFollowCarMode (in Handle *mapViewInstanceHandle*, out Boolean *followCarMode*)

#comment : getFollowCarMode = This method returns the current FollowCar-mode

2.11.3.15 void org::genivi::navigation::mapviewer::MapViewControl::getMapViewBoundingBox (in Handle *mapViewInstanceHandle*, out Rectangle *boundingBox*)

#comment : getMapViewBoundingBox = This method returns the bounding box of a given map instance

2.11.3.16 void org::genivi::navigation::mapviewer::MapViewControl::getMapViewObjectVisibility (in Handle *mapViewInstanceHandle*, out MapObjectVisibility *objectVisibilityList*)

#comment : getMapViewObjectVisibility = This method gets the type of objects shown on the map.

2.11.3.17 void org::genivi::navigation::mapviewer::MapViewControl::getMapViewPan (in Handle *mapViewInstanceHandle*, in PanAction *valueToReturn*, out Pixel *pixelCoordinates*)

#comment : getMapViewPan

2.11.3.18 void org::genivi::navigation::mapviewer::MapViewControl::getMapViewPerformanceLevel (in Handle *mapViewInstanceHandle*, out Level *performanceLevel*)

#comment : getMapViewPerformanceLevel = This method returns the performance level of a given map instance

2.11.3.19 void org::genivi::navigation::mapviewer::MapViewControl::getMapViewPerspective (in Handle *mapViewInstanceHandle*, out MapPerspective *perspective*)

#comment : getMapViewPerspective = This method returns the current map perspective

2.11.3.20 void org::genivi::navigation::mapviewer::MapViewControl::getMapViewRotation (in Handle *mapViewInstanceHandle*, out Int32 *rotationAngle*, out Int32 *rotationAnglePerFrame*)

#comment : getMapViewRotation = This method is particularly interesting for debugging purposes

2.11.3.21 void org::genivi::navigation::mapviewer::MapViewControl::getMapViewSaveArea (in Handle *mapViewInstanceHandle*, out MapViewArea *saveArea*)

#comment : getMapViewSaveArea = This methods defines the area that the HMI guarantees not to cover with other windows or user interface elements

2.11.3.22 void org::genivi::navigation::mapviewer::MapViewControl::getMapViewScale (in Handle *mapViewInstanceHandle*, out UInt8 *scaleID*, out MapScaleType *isMinMax*)

#comment : getMapViewScale = This method returns the currently used map scale

2.11.3.23 void org::genivi::navigation::mapviewer::MapViewControl::getMapViewScaleMode (in Handle *mapViewInstanceHandle*, out MapScaleMode *scaleMode*)

#comment : getMapViewScaleMode = This method gets the scaling mode.

2.11.3.24 void org::genivi::navigation::mapviewer::MapViewControl::getMapViewTheme (in Handle *mapViewInstanceHandle*, out MapTheme *mapViewTheme*)

#comment : getMapViewTheme = This method returns the current theme of a given map view instance

2.11.3.25 void org::genivi::navigation::mapviewer::MapViewControl::getMapViewType (in Handle *mapViewInstanceHandle*, out MapViewType *mapViewType*)

#comment : getMapViewType = This method returns the map type of a map instance as it was set using Create↔MapViewInstance

2.11.3.26 void org::genivi::navigation::mapviewer::MapViewControl::getMapViewVisibilityMode (in Handle *mapViewInstanceHandle*, out Visibility *visibilityMode*)

#comment : getMapViewVisibilityMode = This method returns the current visibility mode

2.11.3.27 void org::genivi::navigation::mapviewer::MapViewControl::getPoiCategoriesVisible (in Handle *mapViewInstanceHandle*, out CategoryID *poiCategoryIds*)

#comment : getPoiCategoriesVisible = Get the set of POI categories displayed on the map.

2.11.3.28 void org::genivi::navigation::mapviewer::MapViewControl::getScaleList (in Handle *mapViewInstanceHandle*, out MapScale *scaleList*)

#comment : getScaleList = This method returns a list of supported map scales

2.11.3.29 void org::genivi::navigation::mapviewer::MapViewControl::getSupportedMapViewObjectVisibilities (in Handle *mapViewInstanceHandle*, out MapObject *objectVisibilityList*)

#comment : getSupportedMapViewObjectVisibilities = This method gets the supported object visibilities.

2.11.3.30 void org::genivi::navigation::mapviewer::MapViewControl::getSupportedMapViewPerformanceLevels (out Level *performanceLevelList*)

#comment : getSupportedMapViewPerformanceLevels = This method retrieves the supported performance levels

2.11.3.31 void org::genivi::navigation::mapviewer::MapViewControl::getSupportedMapViewPerspectives (out MapPerspective *perspectiveList*)

#comment : getSupportedMapViewPerspectives = This method retrieves the supported mapview perspectives

2.11.3.32 void org::genivi::navigation::mapviewer::MapViewControl::getSupportedMapViewScaleModes (in Handle *mapViewInstanceHandle*, out MapScaleMode *scaleModeList*)

#comment : getSupportedMapViewScaleModes = This method gets the supported scaling modes.

2.11.3.33 void org::genivi::navigation::mapviewer::MapViewControl::getSupportedMapViewThemes (out MapTheme mapViewThemeList)

#comment : getSupportedMapViewThemes = This method retrieves the supported mapview themes

2.11.3.34 void org::genivi::navigation::mapviewer::MapViewControl::getSupportedMapViewTypes (out MapViewType mapViewTypeList)

#comment : getSupportedMapViewTypes = This method retrieves the supported map view types

2.11.3.35 void org::genivi::navigation::mapviewer::MapViewControl::getSupportedMapViewVisibilityModes (out Visibility visibilityModeList)

#comment : getSupportedMapViewVisibilityModes = This method retrieves the supported mapview visibility modes

2.11.3.36 void org::genivi::navigation::mapviewer::MapViewControl::getTargetPoint (in Handle mapViewInstanceHandle, out Coordinate3D targetPoint)

#comment : getTargetPoint = This method retrieves the target point position

2.11.3.37 void org::genivi::navigation::mapviewer::MapViewControl::getVersion (out Version version)

#comment : getVersion = This method returns the API version implemented by the server application

2.11.3.38 void org::genivi::navigation::mapviewer::MapViewControl::hideCustomElements (in Handle sessionHandle, in Handle mapViewInstanceHandle, in Handle customElementHandles)

#comment : hideCustomElements = This method hides a set of custom elements which were visualized by DisplayCustomElements

2.11.3.39 void org::genivi::navigation::mapviewer::MapViewControl::hideRoute (in Handle sessionHandle, in Handle mapViewInstanceHandle, in Handle routeHandle)

#comment : hideRoute = This method hides one of the visible routes

2.11.3.40 void org::genivi::navigation::mapviewer::MapViewControl::releaseMapViewInstance (in Handle sessionHandle, in Handle mapViewInstanceHandle)

#comment : releaseMapViewInstance = This method releases (i.e. destroys) a given map instance. Only invisible map instances can be released

2.11.3.41 void org::genivi::navigation::mapviewer::MapViewControl::selectElementsOnMap (in Handle mapViewInstanceHandle, in Pixel pixelCoordinate, in SelectableMapType selectableTypes, in UInt16 numberOfSelectedElements, out SelectedMapElement selectedElements)

#comment : selectElementsOnMap = This method selects elements on the map view which are at the position specified by user input

2.11.3.42 void org::genivi::navigation::mapviewer::MapViewControl::setCameraDistanceFromTargetPoint (in Handle *sessionHandle*, in Handle *mapViewInstanceHandle*, in UInt32 *distance*)

#comment : setCameraDistanceFromTargetPoint = This method sets the mode and the camera distance from the target point

2.11.3.43 void org::genivi::navigation::mapviewer::MapViewControl::setCameraHeadingAngle (in Handle *sessionHandle*, in Handle *mapViewInstanceHandle*, in Int32 *heading*)

#comment : setCameraHeadingAngle = This method sets the map view heading angle Note: the camera position will be automatically set in such a way, that it looks at the currently selected target point

2.11.3.44 void org::genivi::navigation::mapviewer::MapViewControl::setCameraHeadingToTarget (in Handle *sessionHandle*, in Handle *mapViewInstanceHandle*, in Coordinate2D *target*)

#comment : setCameraHeadingToTarget = This method sets the camera heading in such a way, that the camera always looks at a given target

2.11.3.45 void org::genivi::navigation::mapviewer::MapViewControl::setCameraHeadingTrackUp (in Handle *sessionHandle*, in Handle *mapViewInstanceHandle*)

#comment : setCameraHeadingTrackUp = This method sets the camera heading in such a way, that the camera always looks in the direction in which the car is moving

2.11.3.46 void org::genivi::navigation::mapviewer::MapViewControl::setCameraHeight (in Handle *sessionHandle*, in Handle *mapViewInstanceHandle*, in UInt32 *height*)

#comment : setCameraHeight = This method sets the camera height

2.11.3.47 void org::genivi::navigation::mapviewer::MapViewControl::setCameraPosition (in Handle *sessionHandle*, in Handle *mapViewInstanceHandle*, in Coordinate3D *position*)

#comment : setCameraPosition = This method sets the coordinates of the point at which the camera must be positioned Note: the camera heading will be automatically set in such a way, that the camera is aimed at the view point

2.11.3.48 void org::genivi::navigation::mapviewer::MapViewControl::setCameraRollAngle (in Handle *sessionHandle*, in Handle *mapViewInstanceHandle*, in Int32 *roll*)

#comment : setCameraRollAngle = This method sets the camera roll angle

2.11.3.49 void org::genivi::navigation::mapviewer::MapViewControl::setCameraTiltAngle (in Handle *sessionHandle*, in Handle *mapViewInstanceHandle*, in Int32 *tilt*)

#comment : setCameraTiltAngle = This method sets the camera tilt angle

2.11.3.50 void org::genivi::navigation::mapviewer::MapViewControl::setFollowCarMode (in Handle *sessionHandle*, in Handle *mapViewInstanceHandle*, in Boolean *followCarMode*)

#comment : setFollowCarMode = This method sets the FollowCar mode

2.11.3.51 void org::genivi::navigation::mapviewer::MapViewControl::setMapViewBoundingBox (in Handle *sessionHandle*, in Handle *mapViewInstanceHandle*, in Rectangle *boundingBox*)

#comment : setMapViewBoundingBox = This method sets the map bounding box

2.11.3.52 void org::genivi::navigation::mapviewer::MapViewControl::setMapViewObjectVisibility (in Handle *sessionHandle*, in Handle *mapViewInstanceHandle*, in MapObjectVisibility *objectVisibilityList*)

#comment : setMapViewObjectVisibility = This method specifies the type of objects to show on the map.

2.11.3.53 void org::genivi::navigation::mapviewer::MapViewControl::setMapViewPan (in Handle *sessionHandle*, in Handle *mapViewInstanceHandle*, in PanAction *panningAction*, in Pixel *pixelCoordinates*)

#comment : setMapViewPan = This method pans a given map instance

2.11.3.54 void org::genivi::navigation::mapviewer::MapViewControl::setMapViewPerformanceLevel (in Handle *sessionHandle*, in Handle *mapViewInstanceHandle*, in Level *performanceLevel*)

#comment : setMapViewPerformanceLevel = This method sets the performance level of a given map instance

2.11.3.55 void org::genivi::navigation::mapviewer::MapViewControl::setMapViewPerspective (in Handle *sessionHandle*, in Handle *mapViewInstanceHandle*, in MapPerspective *perspective*)

#comment : setMapViewPerspective = This method sets the map perspective

2.11.3.56 void org::genivi::navigation::mapviewer::MapViewControl::setMapViewRotation (in Handle *sessionHandle*, in Handle *mapViewInstanceHandle*, in Int32 *rotationAngle*, in Int32 *rotationAnglePerSecond*)

#comment : setMapViewRotation = This method rotates the map

2.11.3.57 void org::genivi::navigation::mapviewer::MapViewControl::setMapViewSaveArea (in Handle *sessionHandle*, in Handle *mapViewInstanceHandle*, in MapViewArea *saveArea*)

#comment : setMapViewSaveArea = This methods defines the area that the HMI guarantees not to cover with other windows or user interface elements

2.11.3.58 void org::genivi::navigation::mapviewer::MapViewControl::setMapViewScale (in Handle *sessionHandle*, in Handle *mapViewInstanceHandle*, in UInt16 *scaleID*)

#comment : setMapViewScale = This method sets the map scale by specifying a ScaleID

2.11.3.59 void org::genivi::navigation::mapviewer::MapViewControl::setMapViewScaleByDelta (in Handle *sessionHandle*, in Handle *mapViewInstanceHandle*, in Int16 *scaleDelta*)

#comment : setMapViewScaleByDelta = This method sets the map scale by specifying a delta value with respect to the currently set ScaleID

2.11.3.60 void org::genivi::navigation::mapviewer::MapViewControl::setMapViewScaleByMetersPerPixel (in Handle *sessionHandle*, in Handle *mapViewInstanceHandle*, in Double *metersPerPixel*)

#comment : setMapViewScaleByMetersPerPixel = This method sets the map scale by specifying the number of meters that a pixel represents

2.11.3.61 void org::genivi::navigation::mapviewer::MapViewControl::setMapViewScaleMode (in Handle *sessionHandle*, in Handle *mapViewInstanceHandle*, in MapScaleMode *scaleMode*)

#comment : setMapViewScaleMode = This method sets the scaling mode.

2.11.3.62 void org::genivi::navigation::mapviewer::MapViewControl::setMapViewTheme (in Handle *sessionHandle*, in Handle *mapViewInstanceHandle*, in MapTheme *mapViewTheme*)

#comment : setMapViewTheme = This method configures the theme of a given map view instance

2.11.3.63 void org::genivi::navigation::mapviewer::MapViewControl::setMapViewVisibilityMode (in Handle *sessionHandle*, in Handle *mapViewInstanceHandle*, in Visibility *visibilityMode*)

#comment : setMapViewVisibilityMode = This method sets the current visibility mode

2.11.3.64 void org::genivi::navigation::mapviewer::MapViewControl::setPoiCategoriesNotVisible (in Handle *sessionHandle*, in Handle *mapViewInstanceHandle*, in CategoryID *poiCategoryIds*)

#comment : setPoiCategoriesNotVisible = Remove POI categories from the set of POI categories displayed on the map.

2.11.3.65 void org::genivi::navigation::mapviewer::MapViewControl::setPoiCategoriesVisible (in Handle *sessionHandle*, in Handle *mapViewInstanceHandle*, in CategoryID *poiCategoryIds*)

#comment : setPoiCategoriesVisible = Add POI categories to the set of POI categories displayed on the map. Any specified category that until now was displayed with scale limits is now displayed without limits.

2.11.3.66 void org::genivi::navigation::mapviewer::MapViewControl::setPoiCategoriesVisibleWithinLimits (in Handle *sessionHandle*, in Handle *mapViewInstanceHandle*, in CategoryID *poiCategoryIds*, in UInt8 *minScaleID*, in UInt8 *maxScaleID*)

#comment : setPoiCategoriesVisible = Add POI categories to the set of POI categories displayed on the map, where the POI's are only displayed in a specific range of scales. Any specified category that until now was displayed without scale limits is now displayed with limits.

2.11.3.67 void org::genivi::navigation::mapviewer::MapViewControl::setTargetPoint (in Handle *sessionHandle*, in Handle *mapViewInstanceHandle*, in Coordinate3D *targetPoint*)

#comment : setTargetPoint = This method sets the position of the point the camera is always aimed at

2.11.3.68 void org::genivi::navigation::mapviewer::MapViewControl::setTrafficIncidentsVisibility (in Handle *sessionHandle*, in Handle *mapViewInstanceHandle*, in Boolean *visible*)

#comment : setTrafficIncidentsVisibility = Set the visibility of Traffic Incidents on the map.

2.11.4 Member Data Documentation

2.11.4.1 map_CustomElementDict org::genivi::navigation::mapviewer::MapViewControl::Handle =>CustomElement

2.11.4.2 map_MapObjectVisibility org::genivi::navigation::mapviewer::MapViewControl::MapObject =>Boolean

The documentation for this interface was generated from the following file:

- [MapViewControl.fidl](#)

2.12 org::genivi::navigation::mapviewer::MapViewControl_client Interface Reference

Public Member Functions

- void [followCarModeChanged](#) (in Handle *mapViewInstanceHandle*, in Boolean *followCarMode*)
- void [cameraPositionChanged](#) (in Handle *mapViewInstanceHandle*, in *Coordinate3D* *targetPoint*)
- void [CameraHeadingChanged](#) (in Handle *mapViewInstanceHandle*, in *HeadingType* *headingType*, in *Int32* *headingAngle*)
- void [cameraTiltAngleChanged](#) (in Handle *mapViewInstanceHandle*, in *Int32* *tilt*)
- void [cameraDistanceFromTargetPointChanged](#) (in Handle *mapViewInstanceHandle*, in *UInt32* *distance*)
- void [mapViewScaleChanged](#) (in Handle *mapViewInstanceHandle*, in *UInt8* *scaleID*, in *MapScaleType* *isMin↔Max*)
- void [MapViewPerspectiveChanged](#) (in Handle *mapViewInstanceHandle*, in *MapPerspective* *perspective*)
- void [mapViewObjectVisibilityChanged](#) (in Handle *mapViewInstanceHandle*, in *MapObjectVisibility* *object↔VisibilityList*)
- void [mapViewBoundingBoxChanged](#) (in Handle *mapViewInstanceHandle*, in *Rectangle* *boundingBox*)
- void [mapViewSaveAreaChanged](#) (in Handle *mapViewInstanceHandle*, in *MapViewArea* *saveArea*)
- void [mapViewVisibilityChanged](#) (in Handle *mapViewInstanceHandle*, in *Visibility* *visibilityMode*)
- void [mapViewPerformanceLevelChanged](#) (in Handle *mapViewInstanceHandle*, in *Level* *performanceLevel*)
- void [displayedRoutes](#) (in Handle *mapViewInstanceHandle*, in *DisplayedRoute* *displayedRoutes*)
- void [poiCategoriesVisibilityChanged](#) (in Handle *mapViewInstanceHandle*, in *CategoryVisibility* *poiCategory↔Visibilities*)
- void [mapViewThemeChanged](#) (in Handle *mapViewInstanceHandle*, in *MapTheme* *mapViewTheme*)

2.12.1 Member Function Documentation

2.12.1.1 void org::genivi::navigation::mapviewer::MapViewControl_client::cameraDistanceFromTargetPointChanged (in Handle *mapViewInstanceHandle*, in *UInt32* *distance*)

broadcast #comment : cameraDistanceFromTargetPointChanged = This signal is emitted when the camera distance from the target point changes

2.12.1.2 void org::genivi::navigation::mapviewer::MapViewControl_client::CameraHeadingChanged (in Handle *mapViewInstanceHandle*, in *HeadingType* *headingType*, in *Int32* *headingAngle*)

broadcast #comment : CameraHeadingChanged = This signal is emitted when the heading angle of the camera changes

2.12.1.3 void org::genivi::navigation::mapviewer::MapViewControl_client::cameraPositionChanged (in Handle *mapViewInstanceHandle*, in *Coordinate3D* *targetPoint*)

broadcast #comment : cameraPositionChanged = This signal is emitted when the position of the camera changes

2.12.1.4 void org::genivi::navigation::mapviewer::MapViewControl_client::cameraTiltAngleChanged (in Handle *mapViewInstanceHandle*, in *Int32* *tilt*)

broadcast #comment : cameraTiltAngleChanged = This signal is emitted when the camera tilt angle changes

2.12.1.5 void org::genivi::navigation::mapviewer::MapViewControl_client::displayedRoutes (in Handle *mapViewInstanceHandle*, in *DisplayedRoute* *displayedRoutes*)

broadcast #comment : displayedRoutes = This signal is emitted when the list of displayed routes change

2.12.1.6 void org::genivi::navigation::mapviewer::MapViewControl_client::followCarModeChanged (in Handle *mapViewInstanceHandle*, in Boolean *followCarMode*)

broadcast #comment : followCarModeChanged = This signal is emitted when the follow-car-mode changes

2.12.1.7 void org::genivi::navigation::mapviewer::MapViewControl_client::mapViewBoundingBoxChanged (in Handle *mapViewInstanceHandle*, in Rectangle *boundingBox*)

broadcast #comment : mapViewBoundingBoxChanged = This signal is emitted when the bounding box of a map instance changes

2.12.1.8 void org::genivi::navigation::mapviewer::MapViewControl_client::mapViewObjectVisibilityChanged (in Handle *mapViewInstanceHandle*, in MapObjectVisibility *objectVisibilityList*)

broadcast #comment : mapViewObjectVisibilityChanged = This signal is emitted when the type of objects shown on the map changes

2.12.1.9 void org::genivi::navigation::mapviewer::MapViewControl_client::mapViewPerformanceLevelChanged (in Handle *mapViewInstanceHandle*, in Level *performanceLevel*)

broadcast #comment : mapViewPerformanceLevelChanged = This signal is emitted when the performance level of a map instance changes

2.12.1.10 void org::genivi::navigation::mapviewer::MapViewControl_client::MapViewPerspectiveChanged (in Handle *mapViewInstanceHandle*, in MapPerspective *perspective*)

broadcast #comment : MapViewPerspectiveChanged = This signal is emitted when the map perspective changes

2.12.1.11 void org::genivi::navigation::mapviewer::MapViewControl_client::mapViewSaveAreaChanged (in Handle *mapViewInstanceHandle*, in MapViewArea *saveArea*)

broadcast #comment : mapViewSaveAreaChanged = This signal is emitted when the area that the HMI guarantees not to cover with other windows or user interface elements changes

2.12.1.12 void org::genivi::navigation::mapviewer::MapViewControl_client::mapViewScaleChanged (in Handle *mapViewInstanceHandle*, in UInt8 *scaleID*, in MapScaleType *isMinMax*)

broadcast #comment : mapViewScaleChanged = This signal is emitted when the mapview scale changes

2.12.1.13 void org::genivi::navigation::mapviewer::MapViewControl_client::mapViewThemeChanged (in Handle *mapViewInstanceHandle*, in MapTheme *mapViewTheme*)

broadcast #comment : mapViewThemeChanged = This signal is emitted when the theme of a map view instance changes

2.12.1.14 void org::genivi::navigation::mapviewer::MapViewControl_client::mapViewVisibilityChanged (in Handle *mapViewInstanceHandle*, in Visibility *visibilityMode*)

broadcast #comment : mapViewVisibilityChanged = This signal is emitted when the MapView visibility changes

2.12.1.15 void org::genivi::navigation::mapviewer::MapViewControl_client::poiCategoriesVisibilityChanged (in Handle *mapViewInstanceHandle*, in CategoryVisibility *poiCategoryVisibilities*)

broadcast #comment : poiCategoriesVisibilityChanged = This signal is emitted when the visibility of POI categories on a map instance changes

The documentation for this interface was generated from the following file:

- [MapViewControl.fidl](#)

2.13 org::genivi::navigation::mapviewer::MapViewControl::Pixel Struct Reference

Public Attributes

- UInt16 *x*
- UInt16 *y*

2.13.1 Member Data Documentation

2.13.1.1 UInt16 org::genivi::navigation::mapviewer::MapViewControl::Pixel::x

2.13.1.2 UInt16 org::genivi::navigation::mapviewer::MapViewControl::Pixel::y

The documentation for this struct was generated from the following file:

- [MapViewControl.fidl](#)

2.14 org::genivi::navigation::mapviewer::MapViewControl::SelectedMapElement Struct Reference

Public Attributes

- [SelectableMapType](#) *type*
- [Coordinate2D](#) *position*
- [ElementValue](#) *value*

2.14.1 Member Data Documentation

2.14.1.1 [Coordinate2D](#) org::genivi::navigation::mapviewer::MapViewControl::SelectedMapElement::position

2.14.1.2 [SelectableMapType](#) org::genivi::navigation::mapviewer::MapViewControl::SelectedMapElement::type

2.14.1.3 [ElementValue](#) org::genivi::navigation::mapviewer::MapViewControl::SelectedMapElement::value

The documentation for this struct was generated from the following file:

- [MapViewControl.fidl](#)

2.15 org::genivi::navigation::mapviewer::Session Interface Reference

Public Member Functions

- void [getVersion](#) (out Version version)
- void [createSession](#) (in String clientApp, out Handle sessionHandle)
- void [deleteSession](#) (in Handle sessionHandle)
- void [getSessionStatus](#) (in Handle sessionHandle, out SessionStatus sessionStatus)
- void [getAllSessions](#) (out [Session](#) sessionsList)

2.15.1 Detailed Description

#comment : This interface offers methods that implement the navigation core session functionality of a navigation system.

2.15.2 Member Function Documentation

2.15.2.1 void org::genivi::navigation::mapviewer::Session::createSession (in String *clientApp*, out Handle *sessionHandle*)

#comment : createSession = This method creates a new session and retrieves a handle .

2.15.2.2 void org::genivi::navigation::mapviewer::Session::deleteSession (in Handle *sessionHandle*)

#comment : deleteSession = This method deletes a session and its associated resources .

2.15.2.3 void org::genivi::navigation::mapviewer::Session::getAllSessions (out [Session](#) *sessionsList*)

#comment : This method returns a list of all available sessions .

2.15.2.4 void org::genivi::navigation::mapviewer::Session::getSessionStatus (in Handle *sessionHandle*, out SessionStatus *sessionStatus*)

#comment : This method returns whether a given session handle is available or not (for example because it was deleted) .

2.15.2.5 void org::genivi::navigation::mapviewer::Session::getVersion (out Version *version*)

#comment : This method returns the API version .

The documentation for this interface was generated from the following file:

- [Session.fidl](#)

2.16 org::genivi::navigation::mapviewer::Session_client Interface Reference

Public Member Functions

- void [sessionDeleted](#) (in Handle sessionHandle)

2.16.1 Member Function Documentation

2.16.1.1 void org::genivi::navigation::mapviewer::Session_client::sessionDeleted (in Handle *sessionHandle*)

broadcast #comment : sessionDeleted = This signal is emitted when a session is deleted

The documentation for this interface was generated from the following file:

- [Session.fidl](#)

2.17 org::genivi::navigation::mapviewer::MapViewControl::WayPointValue Struct Reference

Public Attributes

- [Handle routeHandle](#)
- [UInt16 waypointIndex](#)

2.17.1 Member Data Documentation

2.17.1.1 Handle org::genivi::navigation::mapviewer::MapViewControl::WayPointValue::routeHandle

2.17.1.2 UInt16 org::genivi::navigation::mapviewer::MapViewControl::WayPointValue::waypointIndex

The documentation for this struct was generated from the following file:

- [MapViewControl.fidl](#)

3 File Documentation

3.1 Configuration.fidl File Reference

Classes

- interface [org::genivi::navigation::mapviewer::Configuration](#)
- interface [org::genivi::navigation::mapviewer::Configuration_client](#)

Modules

- module [org::genivi::navigation::mapviewer](#)

3.2 MapViewerControl.fidl File Reference

Classes

- interface [org::genivi::navigation::mapviewer::MapViewerControl](#)
- struct [org::genivi::navigation::mapviewer::MapViewerControl::Dimension](#)
- struct [org::genivi::navigation::mapviewer::MapViewerControl::MapScale](#)
- struct [org::genivi::navigation::mapviewer::MapViewerControl::MapViewArea](#)
- struct [org::genivi::navigation::mapviewer::MapViewerControl::Pixel](#)
- struct [org::genivi::navigation::mapviewer::MapViewerControl::DisplayedRoute](#)
- struct [org::genivi::navigation::mapviewer::MapViewerControl::CategoryVisibility](#)
- struct [org::genivi::navigation::mapviewer::MapViewerControl::AnchorPoint](#)
- struct [org::genivi::navigation::mapviewer::MapViewerControl::CustomElement](#)
- struct [org::genivi::navigation::mapviewer::MapViewerControl::SelectedMapElement](#)
- struct [org::genivi::navigation::mapviewer::MapViewerControl::WayPointValue](#)
- union [org::genivi::navigation::mapviewer::MapViewerControl::ElementValue](#)
- interface [org::genivi::navigation::mapviewer::MapViewerControl_client](#)

Modules

- module [org::genivi::navigation::mapviewer](#)

3.3 Session.fidl File Reference

Classes

- interface [org::genivi::navigation::mapviewer::Session](#)
- interface [org::genivi::navigation::mapviewer::Session_client](#)

Modules

- module [org::genivi::navigation::mapviewer](#)

Index

AUTOMATIC

org::genivi::navigation::mapviewer::MapView↔
Control, 14

BUILDINGS

org::genivi::navigation::mapviewer::MapView↔
Control, 13

bottom

org::genivi::navigation::mapviewer::MapView↔
Control::MapViewArea, 9

CONSTANT_ANGLE

org::genivi::navigation::mapviewer::MapView↔
Control, 13

COORDINATES_FORMAT

org::genivi::navigation::mapviewer::Configuration,
4

CURRENT_POSITION

org::genivi::navigation::mapviewer::MapView↔
Control, 16

CUSTOM_ELEMENT

org::genivi::navigation::mapviewer::MapView↔
Control, 16

cameraDistanceFromTargetPointChanged

org::genivi::navigation::mapviewer::MapView↔
Control_client, 24

CameraHeadingChanged

org::genivi::navigation::mapviewer::MapView↔
Control_client, 24

cameraPositionChanged

org::genivi::navigation::mapviewer::MapView↔
Control_client, 24

cameraTiltAngleChanged

org::genivi::navigation::mapviewer::MapView↔
Control_client, 24

Configuration.fidl, 28

configurationChanged

org::genivi::navigation::mapviewer::Configuration↔
_client, 6

convertGeoCoordsToPixelCoords

org::genivi::navigation::mapviewer::MapView↔
Control, 16

convertPixelCoordsToGeoCoords

org::genivi::navigation::mapviewer::MapView↔
Control, 16

coordinate

org::genivi::navigation::mapviewer::MapView↔
Control::CustomElement, 7

CoordinatesFormat

org::genivi::navigation::mapviewer::Configuration,
4

createMapViewInstance

org::genivi::navigation::mapviewer::MapView↔
Control, 16

createSession

org::genivi::navigation::mapviewer::Session, 27

DEGREES

org::genivi::navigation::mapviewer::Configuration,
4

DET_BREAD_CRUMB_TRAIL

org::genivi::navigation::mapviewer::MapView↔
Control, 14

DET_CITY_BUILDINGS

org::genivi::navigation::mapviewer::MapView↔
Control, 14

DET_CITY_MARKER

org::genivi::navigation::mapviewer::MapView↔
Control, 13

DET_CITY_NAME

org::genivi::navigation::mapviewer::MapView↔
Control, 13

DET_CITYMODEL_ROUTE_TRANSPARENCY

org::genivi::navigation::mapviewer::MapView↔
Control, 14

DET_CORONA

org::genivi::navigation::mapviewer::MapView↔
Control, 14

DET_CROSSHAIR

org::genivi::navigation::mapviewer::MapView↔
Control, 14

DET_DESTINATION

org::genivi::navigation::mapviewer::MapView↔
Control, 13

DET_DEVDROP_BANNER

org::genivi::navigation::mapviewer::MapView↔
Control, 14

DET_DIRECTION_ARROW

org::genivi::navigation::mapviewer::MapView↔
Control, 14

DET_DTM

org::genivi::navigation::mapviewer::MapView↔
Control, 13

DET_EDGE_HIGHLIGHTING

org::genivi::navigation::mapviewer::MapView↔
Control, 14

DET_FAVORITES

org::genivi::navigation::mapviewer::MapView↔
Control, 13

DET_FPS_DISPLAY

org::genivi::navigation::mapviewer::MapView↔
Control, 14

DET_FRAME_AROUND_MAP

org::genivi::navigation::mapviewer::MapView↔
Control, 14

DET_LANDMARKS_3D

org::genivi::navigation::mapviewer::MapView↔
Control, 13

DET_LANE_GUIDANCE_MARKER

org::genivi::navigation::mapviewer::MapView↔
Control, 13

DET_MANOEUVRE_ARROW

- org::genivi::navigation::mapviewer::MapView↔
Control, 13
- DET_MANOEUVRE_MARKER
org::genivi::navigation::mapviewer::MapView↔
Control, 13
- DET_MOTORWAY_EXIT_MARKER
org::genivi::navigation::mapviewer::MapView↔
Control, 13
- DET_OFF_ROAD_ROUTE
org::genivi::navigation::mapviewer::MapView↔
Control, 14
- DET_ONE_WAY_STREET_ARROW
org::genivi::navigation::mapviewer::MapView↔
Control, 13
- DET_POI_BRANDS
org::genivi::navigation::mapviewer::MapView↔
Control, 14
- DET_POI_NAME
org::genivi::navigation::mapviewer::MapView↔
Control, 14
- DET_POLYGON_NAME
org::genivi::navigation::mapviewer::MapView↔
Control, 14
- DET_POLYGON
org::genivi::navigation::mapviewer::MapView↔
Control, 13
- DET_POI
org::genivi::navigation::mapviewer::MapView↔
Control, 13
- DET_RAIN
org::genivi::navigation::mapviewer::MapView↔
Control, 14
- DET_RANGE_DISPLAY
org::genivi::navigation::mapviewer::MapView↔
Control, 14
- DET_RASTER_MAP
org::genivi::navigation::mapviewer::MapView↔
Control, 14
- DET_ROAD_ICON
org::genivi::navigation::mapviewer::MapView↔
Control, 13
- DET_ROAD_NAME
org::genivi::navigation::mapviewer::MapView↔
Control, 13
- DET_ROAD
org::genivi::navigation::mapviewer::MapView↔
Control, 13
- DET_ROUTE_BLOCKING
org::genivi::navigation::mapviewer::MapView↔
Control, 13
- DET_ROUTE_DESTINATION
org::genivi::navigation::mapviewer::MapView↔
Control, 14
- DET_ROUTE
org::genivi::navigation::mapviewer::MapView↔
Control, 13
- DET_STENCIL
org::genivi::navigation::mapviewer::MapView↔
Control, 14
- DET_TRAFFIC_LIGHTS_ALONG_ROUTE
org::genivi::navigation::mapviewer::MapView↔
Control, 13
- DET_TRAFFIC_LIGHT
org::genivi::navigation::mapviewer::MapView↔
Control, 13
- DET_TREES
org::genivi::navigation::mapviewer::MapView↔
Control, 14
- DET_TREKKING_TOUR
org::genivi::navigation::mapviewer::MapView↔
Control, 13
- DET_TTI_ARROW
org::genivi::navigation::mapviewer::MapView↔
Control, 14
- DET_TTI_EDGE_HIGHLIGHTING
org::genivi::navigation::mapviewer::MapView↔
Control, 13
- DET_TTI
org::genivi::navigation::mapviewer::MapView↔
Control, 13
- DET_VEHICLE
org::genivi::navigation::mapviewer::MapView↔
Control, 14
- DET_WATEREFFECT
org::genivi::navigation::mapviewer::MapView↔
Control, 14
- DET_WAYPOINT_ROUTE_MARKER
org::genivi::navigation::mapviewer::MapView↔
Control, 14
- DET_WAYPOINT_ROUTE
org::genivi::navigation::mapviewer::MapView↔
Control, 14
- DET_WEATHER_MARKER
org::genivi::navigation::mapviewer::MapView↔
Control, 14
- DET_WEATHER_OVERLAY
org::genivi::navigation::mapviewer::MapView↔
Control, 14
- deleteSession
org::genivi::navigation::mapviewer::Session, 27
- displayCustomElements
org::genivi::navigation::mapviewer::MapView↔
Control, 17
- displayRoute
org::genivi::navigation::mapviewer::MapView↔
Control, 17
- displayedRoutes
org::genivi::navigation::mapviewer::MapView↔
Control_client, 24
- elem4
org::genivi::navigation::mapviewer::MapView↔
Control::CustomElement, 7
- element
org::genivi::navigation::mapviewer::MapView↔
Control::ElementValue, 8

- FOOT
 org::genivi::navigation::mapviewer::Configuration,
 4
 org::genivi::navigation::mapviewer::MapView↔
 Control, 15
- FROZEN
 org::genivi::navigation::mapviewer::MapView↔
 Control, 16
- followCarModeChanged
 org::genivi::navigation::mapviewer::MapView↔
 Control_client, 24
- GEOCOORDINATES
 org::genivi::navigation::mapviewer::MapView↔
 Control, 16
- GUIDING_MAP
 org::genivi::navigation::mapviewer::MapView↔
 Control, 15
- getAllSessions
 org::genivi::navigation::mapviewer::Session, 27
- getCameraDistanceFromTargetPoint
 org::genivi::navigation::mapviewer::MapView↔
 Control, 17
- getCameraHeading
 org::genivi::navigation::mapviewer::MapView↔
 Control, 17
- getCameraHeight
 org::genivi::navigation::mapviewer::MapView↔
 Control, 17
- getCameraPosition
 org::genivi::navigation::mapviewer::MapView↔
 Control, 17
- getCameraRollAngle
 org::genivi::navigation::mapviewer::MapView↔
 Control, 17
- getCameraTiltAngle
 org::genivi::navigation::mapviewer::MapView↔
 Control, 17
- getCoordinatesFormat
 org::genivi::navigation::mapviewer::Configuration,
 5
- getDisplayedCustomElements
 org::genivi::navigation::mapviewer::MapView↔
 Control, 17
- getDisplayedRoutes
 org::genivi::navigation::mapviewer::MapView↔
 Control, 17
- getFollowCarMode
 org::genivi::navigation::mapviewer::MapView↔
 Control, 18
- getLocale
 org::genivi::navigation::mapviewer::Configuration,
 5
- getMapViewBoundingBox
 org::genivi::navigation::mapviewer::MapView↔
 Control, 18
- getMapViewObjectVisibility
 org::genivi::navigation::mapviewer::MapView↔
 Control, 18
- getMapViewPan
 org::genivi::navigation::mapviewer::MapView↔
 Control, 18
- getMapViewPerformanceLevel
 org::genivi::navigation::mapviewer::MapView↔
 Control, 18
- getMapViewPerspective
 org::genivi::navigation::mapviewer::MapView↔
 Control, 18
- getMapViewRotation
 org::genivi::navigation::mapviewer::MapView↔
 Control, 18
- getMapViewSaveArea
 org::genivi::navigation::mapviewer::MapView↔
 Control, 18
- getMapViewScale
 org::genivi::navigation::mapviewer::MapView↔
 Control, 18
- getMapViewScaleMode
 org::genivi::navigation::mapviewer::MapView↔
 Control, 18
- getMapViewTheme
 org::genivi::navigation::mapviewer::MapView↔
 Control, 19
- getMapViewType
 org::genivi::navigation::mapviewer::MapView↔
 Control, 19
- getMapViewVisibilityMode
 org::genivi::navigation::mapviewer::MapView↔
 Control, 19
- getPoiCategoriesVisible
 org::genivi::navigation::mapviewer::MapView↔
 Control, 19
- getScaleList
 org::genivi::navigation::mapviewer::MapView↔
 Control, 19
- getSessionStatus
 org::genivi::navigation::mapviewer::Session, 27
- getSupportedCoordinatesFormat
 org::genivi::navigation::mapviewer::Configuration,
 5
- getSupportedLocales
 org::genivi::navigation::mapviewer::Configuration,
 5
- getSupportedMapViewObjectVisibilities
 org::genivi::navigation::mapviewer::MapView↔
 Control, 19
- getSupportedMapViewPerformanceLevels
 org::genivi::navigation::mapviewer::MapView↔
 Control, 19
- getSupportedMapViewPerspectives
 org::genivi::navigation::mapviewer::MapView↔
 Control, 19
- getSupportedMapViewScaleModes
 org::genivi::navigation::mapviewer::MapView↔
 Control, 19
- getSupportedMapViewThemes
 org::genivi::navigation::mapviewer::MapView↔

- Control, [19](#)
- getSupportedMapViewTypes
 - org::genivi::navigation::mapviewer::MapView↔
Control, [20](#)
- getSupportedMapViewVisibilityModes
 - org::genivi::navigation::mapviewer::MapView↔
Control, [20](#)
- getSupportedTimeFormats
 - org::genivi::navigation::mapviewer::Configuration,
[5](#)
- getSupportedUnitsOfMeasurement
 - org::genivi::navigation::mapviewer::Configuration,
[5](#)
- getTargetPoint
 - org::genivi::navigation::mapviewer::MapView↔
Control, [20](#)
- getTimeFormat
 - org::genivi::navigation::mapviewer::Configuration,
[5](#)
- getUnitsOfMeasurement
 - org::genivi::navigation::mapviewer::Configuration,
[5](#)
- getVersion
 - org::genivi::navigation::mapviewer::Configuration,
[5](#)
 - org::genivi::navigation::mapviewer::MapView↔
Control, [20](#)
 - org::genivi::navigation::mapviewer::Session, [27](#)
- HYBRID
 - org::genivi::navigation::mapviewer::MapView↔
Control, [14](#)
- Handle
 - org::genivi::navigation::mapviewer::MapView↔
Control, [23](#)
- handle
 - org::genivi::navigation::mapviewer::MapView↔
Control::ElementValue, [8](#)
- HeadingType
 - org::genivi::navigation::mapviewer::MapView↔
Control, [13](#)
- hideCustomElements
 - org::genivi::navigation::mapviewer::MapView↔
Control, [20](#)
- hideRoute
 - org::genivi::navigation::mapviewer::MapView↔
Control, [20](#)
- highlighted
 - org::genivi::navigation::mapviewer::MapView↔
Control::DisplayedRoute, [8](#)
- horizontalSize
 - org::genivi::navigation::mapviewer::MapView↔
Control::Dimension, [7](#)
- INVALID
 - org::genivi::navigation::mapviewer::Configuration,
[4](#)
- INVISIBLE
 - org::genivi::navigation::mapviewer::MapView↔
Control, [16](#)
- iconUri
 - org::genivi::navigation::mapviewer::MapView↔
Control::CustomElement, [7](#)
- KM
 - org::genivi::navigation::mapviewer::Configuration,
[4](#)
 - org::genivi::navigation::mapviewer::MapView↔
Control, [15](#)
- LENGTH
 - org::genivi::navigation::mapviewer::Configuration,
[4](#)
- LEVEL_1
 - org::genivi::navigation::mapviewer::MapView↔
Control, [13](#)
- LEVEL_2
 - org::genivi::navigation::mapviewer::MapView↔
Control, [13](#)
- LEVEL_3
 - org::genivi::navigation::mapviewer::MapView↔
Control, [13](#)
- LEVEL_4
 - org::genivi::navigation::mapviewer::MapView↔
Control, [13](#)
- LEVEL_5
 - org::genivi::navigation::mapviewer::MapView↔
Control, [13](#)
- LOCALE
 - org::genivi::navigation::mapviewer::Configuration,
[4](#)
- left
 - org::genivi::navigation::mapviewer::MapView↔
Control::MapViewArea, [9](#)
- Level
 - org::genivi::navigation::mapviewer::MapView↔
Control, [13](#)
- MAIN_MAP
 - org::genivi::navigation::mapviewer::MapView↔
Control, [15](#)
- MANUAL
 - org::genivi::navigation::mapviewer::MapView↔
Control, [14](#)
- MAX
 - org::genivi::navigation::mapviewer::MapView↔
Control, [15](#)
- MET_CITY_MARKER
 - org::genivi::navigation::mapviewer::MapView↔
Control, [16](#)
- MET_DESTINATION
 - org::genivi::navigation::mapviewer::MapView↔
Control, [16](#)
- MET_EDGE
 - org::genivi::navigation::mapviewer::MapView↔
Control, [16](#)
- MET_FAVORITE

- org::genivi::navigation::mapviewer::MapView↔
Control, 16
- MET_GENERIC_MARKER
 - org::genivi::navigation::mapviewer::MapView↔
Control, 16
- MET_LANDMARK
 - org::genivi::navigation::mapviewer::MapView↔
Control, 16
- MET_PICTURE
 - org::genivi::navigation::mapviewer::MapView↔
Control, 16
- MET_POLYGON
 - org::genivi::navigation::mapviewer::MapView↔
Control, 16
- MET_POSITION
 - org::genivi::navigation::mapviewer::MapView↔
Control, 16
- MET_POI
 - org::genivi::navigation::mapviewer::MapView↔
Control, 16
- MET_ROAD_ICON
 - org::genivi::navigation::mapviewer::MapView↔
Control, 16
- MET_ROAD
 - org::genivi::navigation::mapviewer::MapView↔
Control, 16
- MET_ROUTE
 - org::genivi::navigation::mapviewer::MapView↔
Control, 16
- MET_TREKKING_ROUTE
 - org::genivi::navigation::mapviewer::MapView↔
Control, 16
- MET_TTI_EDGE
 - org::genivi::navigation::mapviewer::MapView↔
Control, 16
- MET_TTI_ICON
 - org::genivi::navigation::mapviewer::MapView↔
Control, 16
- METER
 - org::genivi::navigation::mapviewer::Configuration,
4
 - org::genivi::navigation::mapviewer::MapView↔
Control, 15
- MILE
 - org::genivi::navigation::mapviewer::Configuration,
4
 - org::genivi::navigation::mapviewer::MapView↔
Control, 15
- MINUTES
 - org::genivi::navigation::mapviewer::Configuration,
4
- MID
 - org::genivi::navigation::mapviewer::MapView↔
Control, 15
- MIN
 - org::genivi::navigation::mapviewer::MapView↔
Control, 15
- MapObject
 - org::genivi::navigation::mapviewer::MapView↔
Control, 13, 23
- MapPerspective
 - org::genivi::navigation::mapviewer::MapView↔
Control, 14
- MapScaleMode
 - org::genivi::navigation::mapviewer::MapView↔
Control, 14
- MapScaleType
 - org::genivi::navigation::mapviewer::MapView↔
Control, 14
- MapScaleUnit
 - org::genivi::navigation::mapviewer::MapView↔
Control, 15
- MapTheme
 - org::genivi::navigation::mapviewer::MapView↔
Control, 15
- mapViewBoundingBoxChanged
 - org::genivi::navigation::mapviewer::MapView↔
Control_client, 25
- mapViewObjectVisibilityChanged
 - org::genivi::navigation::mapviewer::MapView↔
Control_client, 25
- mapViewPerformanceLevelChanged
 - org::genivi::navigation::mapviewer::MapView↔
Control_client, 25
- MapViewPerspectiveChanged
 - org::genivi::navigation::mapviewer::MapView↔
Control_client, 25
- mapViewSaveAreaChanged
 - org::genivi::navigation::mapviewer::MapView↔
Control_client, 25
- mapViewScaleChanged
 - org::genivi::navigation::mapviewer::MapView↔
Control_client, 25
- mapViewThemeChanged
 - org::genivi::navigation::mapviewer::MapView↔
Control_client, 25
- MapViewType
 - org::genivi::navigation::mapviewer::MapView↔
Control, 15
- mapViewVisibilityChanged
 - org::genivi::navigation::mapviewer::MapView↔
Control_client, 25
- MapViewControl.fidl, 29
- maxScaleID
 - org::genivi::navigation::mapviewer::MapView↔
Control::CategoryVisibility, 3
- millimetersPerPixel
 - org::genivi::navigation::mapviewer::MapView↔
Control::MapScale, 9
- minScaleID
 - org::genivi::navigation::mapviewer::MapView↔
Control::CategoryVisibility, 3
- name
 - org::genivi::navigation::mapviewer::MapView↔
Control::CustomElement, 7

- org, 1
- org::genivi, 2
- org::genivi::navigation, 2
- org::genivi::navigation::mapviewer, 2
- org::genivi::navigation::mapviewer::Configuration, 3
 - COORDINATES_FORMAT, 4
 - CoordinatesFormat, 4
 - DEGREES, 4
 - FOOT, 4
 - getCoordinatesFormat, 5
 - getLocale, 5
 - getSupportedCoordinatesFormat, 5
 - getSupportedLocales, 5
 - getSupportedTimeFormats, 5
 - getSupportedUnitsOfMeasurement, 5
 - getTimeFormat, 5
 - getUnitsOfMeasurement, 5
 - getVersion, 5
 - INVALID, 4
 - KM, 4
 - LENGTH, 4
 - LOCALE, 4
 - METER, 4
 - MILE, 4
 - MINUTES, 4
 - SECONDS, 4
 - setCoordinatesFormat, 5
 - setLocale, 5
 - setTimeFormat, 6
 - setUnitsOfMeasurement, 6
 - Settings, 4
 - TIME_FORMAT, 4
 - UNITS_OF_MEASUREMENT, 4
 - UnitsOfMeasurementAttribute, 4, 6
 - UnitsOfMeasurementListValue, 4
 - UnitsOfMeasurementValue, 4
 - YARD, 4
- org::genivi::navigation::mapviewer::Configuration_client, 6
 - configurationChanged, 6
- org::genivi::navigation::mapviewer::MapViewControl, 9
 - AUTOMATIC, 14
 - BUILDINGS, 13
 - CONSTANT_ANGLE, 13
 - CURRENT_POSITION, 16
 - CUSTOM_ELEMENT, 16
 - convertGeoCoordsToPixelCoords, 16
 - convertPixelCoordsToGeoCoords, 16
 - createMapViewInstance, 16
 - DET_BREAD_CRUMB_TRAIL, 14
 - DET_CITY_BUILDINGS, 14
 - DET_CITY_MARKER, 13
 - DET_CITY_NAME, 13
 - DET_CITYMODEL_ROUTE_TRANSPARENCY, 14
 - DET_CORONA, 14
 - DET_CROSSHAIR, 14
 - DET_DESTINATION, 13
 - DET_DEVDROP_BANNER, 14
 - DET_DIRECTION_ARROW, 14
 - DET_DTM, 13
 - DET_EDGE_HIGHLIGHTING, 14
 - DET_FAVORITES, 13
 - DET_FPS_DISPLAY, 14
 - DET_FRAME_AROUND_MAP, 14
 - DET_LANDMARKS_3D, 13
 - DET_LANE_GUIDANCE_MARKER, 13
 - DET_MANOEUVRE_ARROW, 13
 - DET_MANOEUVRE_MARKER, 13
 - DET_MOTORWAY_EXIT_MARKER, 13
 - DET_OFF_ROAD_ROUTE, 14
 - DET_ONE_WAY_STREET_ARROW, 13
 - DET_POI_BRANDS, 14
 - DET_POI_NAME, 14
 - DET_POLYGON_NAME, 14
 - DET_POLYGON, 13
 - DET_POI, 13
 - DET_RAIN, 14
 - DET_RANGE_DISPLAY, 14
 - DET_RASTER_MAP, 14
 - DET_ROAD_ICON, 13
 - DET_ROAD_NAME, 13
 - DET_ROAD, 13
 - DET_ROUTE_BLOCKING, 13
 - DET_ROUTE_DESTINATION, 14
 - DET_ROUTE, 13
 - DET_STENCIL, 14
 - DET_TRAFFIC_LIGHTS_ALONG_ROUTE, 13
 - DET_TRAFFIC_LIGHT, 13
 - DET_TREES, 14
 - DET_TREKKING_TOUR, 13
 - DET_TTI_ARROW, 14
 - DET_TTI_EDGE_HIGHLIGHTING, 13
 - DET_TTI, 13
 - DET_VEHICLE, 14
 - DET_WATEREFFECT, 14
 - DET_WAYPOINT_ROUTE_MARKER, 14
 - DET_WAYPOINT_ROUTE, 14
 - DET_WEATHER_MARKER, 14
 - DET_WEATHER_OVERLAY, 14
 - displayCustomElements, 17
 - displayRoute, 17
 - FOOT, 15
 - FROZEN, 16
 - GEOCOORDINATES, 16
 - GUIDING_MAP, 15
 - getCameraDistanceFromTargetPoint, 17
 - getCameraHeading, 17
 - getCameraHeight, 17
 - getCameraPosition, 17
 - getCameraRollAngle, 17
 - getCameraTiltAngle, 17
 - getDisplayedCustomElements, 17
 - getDisplayedRoutes, 17
 - getFollowCarMode, 18

- getMapViewBoundingBox, 18
- getMapViewObjectVisibility, 18
- getMapViewPan, 18
- getMapViewPerformanceLevel, 18
- getMapViewPerspective, 18
- getMapViewRotation, 18
- getMapViewSaveArea, 18
- getMapViewScale, 18
- getMapViewScaleMode, 18
- getMapViewTheme, 19
- getMapViewType, 19
- getMapViewVisibilityMode, 19
- getPoiCategoriesVisible, 19
- getScaleList, 19
- getSupportedMapViewObjectVisibilities, 19
- getSupportedMapViewPerformanceLevels, 19
- getSupportedMapViewPerspectives, 19
- getSupportedMapViewScaleModes, 19
- getSupportedMapViewThemes, 19
- getSupportedMapViewTypes, 20
- getSupportedMapViewVisibilityModes, 20
- getTargetPoint, 20
- getVersion, 20
- HYBRID, 14
- Handle, 23
- HeadingType, 13
- hideCustomElements, 20
- hideRoute, 20
- INVISIBLE, 16
- KM, 15
- LEVEL_1, 13
- LEVEL_2, 13
- LEVEL_3, 13
- LEVEL_4, 13
- LEVEL_5, 13
- Level, 13
- MAIN_MAP, 15
- MANUAL, 14
- MAX, 15
- MET_CITY_MARKER, 16
- MET_DESTINATION, 16
- MET_EDGE, 16
- MET_FAVORITE, 16
- MET_GENERIC_MARKER, 16
- MET_LANDMARK, 16
- MET_PICTURE, 16
- MET_POLYGON, 16
- MET_POSITION, 16
- MET_POI, 16
- MET_ROAD_ICON, 16
- MET_ROAD, 16
- MET_ROUTE, 16
- MET_TREKKING_ROUTE, 16
- MET_TTI_EDGE, 16
- MET_TTI_ICON, 16
- METER, 15
- MILE, 15
- MID, 15
- MIN, 15
- MapObject, 13, 23
- MapPerspective, 14
- MapScaleMode, 14
- MapScaleType, 14
- MapScaleUnit, 15
- MapTheme, 15
- MapViewType, 15
- PAN_END, 15
- PAN_START, 15
- PAN_TO, 15
- PERSPECTIVE_2D, 14
- PERSPECTIVE_3D, 14
- POI, 16
- PanAction, 15
- ROUTE, 16
- releaseMapViewInstance, 20
- SPLIT_SCREEN, 15
- selectElementsOnMap, 20
- SelectableMapType, 15
- setCameraDistanceFromTargetPoint, 20
- setCameraHeadingAngle, 21
- setCameraHeadingToTarget, 21
- setCameraHeadingTrackUp, 21
- setCameraHeight, 21
- setCameraPosition, 21
- setCameraRollAngle, 21
- setCameraTiltAngle, 21
- setFollowCarMode, 21
- setMapViewBoundingBox, 21
- setMapViewObjectVisibility, 22
- setMapViewPan, 22
- setMapViewPerformanceLevel, 22
- setMapViewPerspective, 22
- setMapViewRotation, 22
- setMapViewSaveArea, 22
- setMapViewScale, 22
- setMapViewScaleByDelta, 22
- setMapViewScaleByMetersPerPixel, 22
- setMapViewScaleMode, 22
- setMapViewTheme, 23
- setMapViewVisibilityMode, 23
- setPoiCategoriesNotVisible, 23
- setPoiCategoriesVisible, 23
- setPoiCategoriesVisibleWithinLimits, 23
- setTargetPoint, 23
- setTrafficIncidentsVisibility, 23
- TERRAIN, 13
- THEME_1, 15
- THEME_2, 15
- THEME_3, 15
- THEME_I_ALTERNATIVE_DAY, 15
- THEME_I_ALTERNATIVE_NIGHT, 15
- THEME_I_ALTERNATIVE_TRAFFIC_DAY, 15
- THEME_I_ALTERNATIVE_TRAFFIC_NIGHT, 15
- THEME_I_CLASSIC_DAY, 15
- THEME_I_CLASSIC_NIGHT, 15
- THEME_I_CLASSIC_TRAFFIC_DAY, 15

- THEME_I_CLASSIC_TRAFFIC_NIGHT, 15
- THEME_I_GUIDING, 15
- TOWARDS_TARGET, 13
- TRACK_UP, 13
- TRAFFIC_INCIDENT, 16
- VISIBLE, 16
- Visibility, 16
- WAYPOINT, 16
- YARD, 15
- org::genivi::navigation::mapviewer::MapView↔
 - Control::AnchorPoint, 2
 - x, 2
 - y, 2
- org::genivi::navigation::mapviewer::MapView↔
 - Control::CategoryVisibility, 3
 - maxScaleID, 3
 - minScaleID, 3
 - poiCategoryId, 3
 - visible, 3
- org::genivi::navigation::mapviewer::MapView↔
 - Control::CustomElement, 7
 - coordinate, 7
 - elem4, 7
 - iconUri, 7
 - name, 7
- org::genivi::navigation::mapviewer::MapView↔
 - Control::Dimension, 7
 - horizontalSize, 7
 - verticalSize, 7
- org::genivi::navigation::mapviewer::MapView↔
 - Control::DisplayedRoute, 7
 - highlighted, 8
 - routeHandle, 8
- org::genivi::navigation::mapviewer::MapView↔
 - Control::ElementValue, 8
 - element, 8
 - handle, 8
 - trafficIncident, 8
 - wayPointValue, 8
- org::genivi::navigation::mapviewer::MapView↔
 - Control::MapScale, 8
 - millimetersPerPixel, 9
 - scaleId, 9
 - scaleValue, 9
 - unit, 9
- org::genivi::navigation::mapviewer::MapView↔
 - Control::MapViewArea, 9
 - bottom, 9
 - left, 9
 - right, 9
 - top, 9
- org::genivi::navigation::mapviewer::MapView↔
 - Control::Pixel, 26
 - x, 26
 - y, 26
- org::genivi::navigation::mapviewer::MapView↔
 - Control::SelectedMapElement, 26
 - position, 26
 - type, 26
 - value, 26
- org::genivi::navigation::mapviewer::MapView↔
 - Control::WayPointValue, 28
 - routeHandle, 28
 - waypointIndex, 28
- org::genivi::navigation::mapviewer::MapView↔
 - Control_client, 24
 - cameraDistanceFromTargetPointChanged, 24
 - CameraHeadingChanged, 24
 - cameraPositionChanged, 24
 - cameraTiltAngleChanged, 24
 - displayedRoutes, 24
 - followCarModeChanged, 24
 - mapViewBoundingBoxChanged, 25
 - mapViewObjectVisibilityChanged, 25
 - mapViewPerformanceLevelChanged, 25
 - MapViewPerspectiveChanged, 25
 - mapViewSaveAreaChanged, 25
 - mapViewScaleChanged, 25
 - mapViewThemeChanged, 25
 - mapViewVisibilityChanged, 25
 - poiCategoriesVisibilityChanged, 25
- org::genivi::navigation::mapviewer::Session, 27
 - createSession, 27
 - deleteSession, 27
 - getAllSessions, 27
 - getSessionStatus, 27
 - getVersion, 27
- org::genivi::navigation::mapviewer::Session_client, 27
 - sessionDeleted, 28
- PAN_END
 - org::genivi::navigation::mapviewer::MapView↔
 - Control, 15
- PAN_START
 - org::genivi::navigation::mapviewer::MapView↔
 - Control, 15
- PAN_TO
 - org::genivi::navigation::mapviewer::MapView↔
 - Control, 15
- PERSPECTIVE_2D
 - org::genivi::navigation::mapviewer::MapView↔
 - Control, 14
- PERSPECTIVE_3D
 - org::genivi::navigation::mapviewer::MapView↔
 - Control, 14
- POI
 - org::genivi::navigation::mapviewer::MapView↔
 - Control, 16
- PanAction
 - org::genivi::navigation::mapviewer::MapView↔
 - Control, 15
- poiCategoriesVisibilityChanged
 - org::genivi::navigation::mapviewer::MapView↔
 - Control_client, 25
- poiCategoryId
 - org::genivi::navigation::mapviewer::MapView↔
 - Control::CategoryVisibility, 3

- position
 - org::genivi::navigation::mapviewer::MapView↔
Control::SelectedMapElement, 26
- ROUTE
 - org::genivi::navigation::mapviewer::MapView↔
Control, 16
- releaseMapViewInstance
 - org::genivi::navigation::mapviewer::MapView↔
Control, 20
- right
 - org::genivi::navigation::mapviewer::MapView↔
Control::MapViewArea, 9
- routeHandle
 - org::genivi::navigation::mapviewer::MapView↔
Control::DisplayedRoute, 8
 - org::genivi::navigation::mapviewer::MapView↔
Control::WayPointValue, 28
- SECONDS
 - org::genivi::navigation::mapviewer::Configuration,
4
- SPLIT_SCREEN
 - org::genivi::navigation::mapviewer::MapView↔
Control, 15
- scaleId
 - org::genivi::navigation::mapviewer::MapView↔
Control::MapScale, 9
- scaleValue
 - org::genivi::navigation::mapviewer::MapView↔
Control::MapScale, 9
- selectElementsOnMap
 - org::genivi::navigation::mapviewer::MapView↔
Control, 20
- SelectableMapType
 - org::genivi::navigation::mapviewer::MapView↔
Control, 15
- Session.fidl, 29
- sessionDeleted
 - org::genivi::navigation::mapviewer::Session_client,
28
- setCameraDistanceFromTargetPoint
 - org::genivi::navigation::mapviewer::MapView↔
Control, 20
- setCameraHeadingAngle
 - org::genivi::navigation::mapviewer::MapView↔
Control, 21
- setCameraHeadingToTarget
 - org::genivi::navigation::mapviewer::MapView↔
Control, 21
- setCameraHeadingTrackUp
 - org::genivi::navigation::mapviewer::MapView↔
Control, 21
- setCameraHeight
 - org::genivi::navigation::mapviewer::MapView↔
Control, 21
- setCameraPosition
 - org::genivi::navigation::mapviewer::MapView↔
Control, 21
- setCameraRollAngle
 - org::genivi::navigation::mapviewer::MapView↔
Control, 21
- setCameraTiltAngle
 - org::genivi::navigation::mapviewer::MapView↔
Control, 21
- setCoordinatesFormat
 - org::genivi::navigation::mapviewer::Configuration,
5
- setFollowCarMode
 - org::genivi::navigation::mapviewer::MapView↔
Control, 21
- setLocale
 - org::genivi::navigation::mapviewer::Configuration,
5
- setMapViewBoundingBox
 - org::genivi::navigation::mapviewer::MapView↔
Control, 21
- setMapViewObjectVisibility
 - org::genivi::navigation::mapviewer::MapView↔
Control, 22
- setMapViewPan
 - org::genivi::navigation::mapviewer::MapView↔
Control, 22
- setMapViewPerformanceLevel
 - org::genivi::navigation::mapviewer::MapView↔
Control, 22
- setMapViewPerspective
 - org::genivi::navigation::mapviewer::MapView↔
Control, 22
- setMapViewRotation
 - org::genivi::navigation::mapviewer::MapView↔
Control, 22
- setMapViewSaveArea
 - org::genivi::navigation::mapviewer::MapView↔
Control, 22
- setMapViewScale
 - org::genivi::navigation::mapviewer::MapView↔
Control, 22
- setMapViewScaleByDelta
 - org::genivi::navigation::mapviewer::MapView↔
Control, 22
- setMapViewScaleByMetersPerPixel
 - org::genivi::navigation::mapviewer::MapView↔
Control, 22
- setMapViewScaleMode
 - org::genivi::navigation::mapviewer::MapView↔
Control, 22
- setMapViewTheme
 - org::genivi::navigation::mapviewer::MapView↔
Control, 23
- setMapViewVisibilityMode
 - org::genivi::navigation::mapviewer::MapView↔
Control, 23
- setPoiCategoriesNotVisible
 - org::genivi::navigation::mapviewer::MapView↔
Control, 23
- setPoiCategoriesVisible

- org::genivi::navigation::mapviewer::MapView↔
Control, 23
- setPoiCategoriesVisibleWithinLimits
org::genivi::navigation::mapviewer::MapView↔
Control, 23
- setTargetPoint
org::genivi::navigation::mapviewer::MapView↔
Control, 23
- setTimeFormat
org::genivi::navigation::mapviewer::Configuration,
6
- setTrafficIncidentsVisibility
org::genivi::navigation::mapviewer::MapView↔
Control, 23
- setUnitsOfMeasurement
org::genivi::navigation::mapviewer::Configuration,
6
- Settings
org::genivi::navigation::mapviewer::Configuration,
4
- TERRAIN
org::genivi::navigation::mapviewer::MapView↔
Control, 13
- THEME_1
org::genivi::navigation::mapviewer::MapView↔
Control, 15
- THEME_2
org::genivi::navigation::mapviewer::MapView↔
Control, 15
- THEME_3
org::genivi::navigation::mapviewer::MapView↔
Control, 15
- THEME_I_ALTERNATIVE_DAY
org::genivi::navigation::mapviewer::MapView↔
Control, 15
- THEME_I_ALTERNATIVE_NIGHT
org::genivi::navigation::mapviewer::MapView↔
Control, 15
- THEME_I_ALTERNATIVE_TRAFFIC_DAY
org::genivi::navigation::mapviewer::MapView↔
Control, 15
- THEME_I_ALTERNATIVE_TRAFFIC_NIGHT
org::genivi::navigation::mapviewer::MapView↔
Control, 15
- THEME_I_CLASSIC_DAY
org::genivi::navigation::mapviewer::MapView↔
Control, 15
- THEME_I_CLASSIC_NIGHT
org::genivi::navigation::mapviewer::MapView↔
Control, 15
- THEME_I_CLASSIC_TRAFFIC_DAY
org::genivi::navigation::mapviewer::MapView↔
Control, 15
- THEME_I_CLASSIC_TRAFFIC_NIGHT
org::genivi::navigation::mapviewer::MapView↔
Control, 15
- THEME_I_GUIDING
org::genivi::navigation::mapviewer::MapView↔
Control, 15
- org::genivi::navigation::mapviewer::MapView↔
Control, 15
- TIME_FORMAT
org::genivi::navigation::mapviewer::Configuration,
4
- TOWARDS_TARGET
org::genivi::navigation::mapviewer::MapView↔
Control, 13
- TRACK_UP
org::genivi::navigation::mapviewer::MapView↔
Control, 13
- TRAFFIC_INCIDENT
org::genivi::navigation::mapviewer::MapView↔
Control, 16
- top
org::genivi::navigation::mapviewer::MapView↔
Control::MapViewArea, 9
- trafficIncident
org::genivi::navigation::mapviewer::MapView↔
Control::ElementValue, 8
- type
org::genivi::navigation::mapviewer::MapView↔
Control::SelectedMapElement, 26
- UNITS_OF_MEASUREMENT
org::genivi::navigation::mapviewer::Configuration,
4
- unit
org::genivi::navigation::mapviewer::MapView↔
Control::MapScale, 9
- UnitsOfMeasurementAttribute
org::genivi::navigation::mapviewer::Configuration,
4, 6
- UnitsOfMeasurementListValue
org::genivi::navigation::mapviewer::Configuration,
4
- UnitsOfMeasurementValue
org::genivi::navigation::mapviewer::Configuration,
4
- VISIBLE
org::genivi::navigation::mapviewer::MapView↔
Control, 16
- value
org::genivi::navigation::mapviewer::MapView↔
Control::SelectedMapElement, 26
- verticalSize
org::genivi::navigation::mapviewer::MapView↔
Control::Dimension, 7
- Visibility
org::genivi::navigation::mapviewer::MapView↔
Control, 16
- visible
org::genivi::navigation::mapviewer::MapView↔
Control::CategoryVisibility, 3
- WAYPOINT
org::genivi::navigation::mapviewer::MapView↔
Control, 16

- wayPointValue
 - org::genivi::navigation::mapviewer::MapView<↔
Control::ElementValue, [8](#)
- waypointIndex
 - org::genivi::navigation::mapviewer::MapView<↔
Control::WayPointValue, [28](#)

- x
 - org::genivi::navigation::mapviewer::MapView<↔
Control::AnchorPoint, [2](#)
 - org::genivi::navigation::mapviewer::MapView<↔
Control::Pixel, [26](#)

- y
 - org::genivi::navigation::mapviewer::MapView<↔
Control::AnchorPoint, [2](#)
 - org::genivi::navigation::mapviewer::MapView<↔
Control::Pixel, [26](#)

- YARD
 - org::genivi::navigation::mapviewer::Configuration,
[4](#)
 - org::genivi::navigation::mapviewer::MapView<↔
Control, [15](#)