



1
2
3
4
5
6
7
8
9
10
11
12
13
14
15
16
17
18
19
20
21
22
23
24
25
26
27

GENIVI DocumentIAmCommandPlugin

Component Design Template for Component IAmCommandPlugin

Platform Compliance Specification

Draft Version 3.0

23.06.2014

Sponsored by:
GENIVI Alliance

Accepted for release by:
This document has not yet been accepted for release by the GENIVI Alliance Board of Directors.

Abstract:
This document describes the collective requirements of the GENIVI OEMs for an "entry navigation" IVI profile.

Keywords: GENIVI

«Hints for entry and help text are in this style. Once you are confident that the document has been completed then all text in this style should be removed. To do so click on this text, press the right mouse button, select STYLES and then STYLES WITH SIMILAR FORMATTING and then press CTRL-X to delete»

1
2 Copyright © GENIVI Alliance, Inc. (2009). All rights Reserved. This information within this
3 document is the property of the GENIVI Alliance and its use and disclosure are restricted.
4

5 Elements of GENIVI Alliance specifications may be subject to third party intellectual property rights,
6 including without limitation, patent, copyright or trademark rights (such a third party may or may not
7 be a member of GENIVI). GENIVI is not responsible and shall not be held responsible in any manner
8 for identifying or failing to identify any or all such third party intellectual property rights.
9

10 This document and the information contained herein are provided on an “AS IS” basis and GENIVI
11 DISCLAIMS ALL WARRANTIES EXPRESS OR IMPLIED, INCLUDING BUT NOT LIMITED TO
12 (A) ANY WARRANTY THAT THE USE OF THE INFORMATION HEREIN WILL NOT
13 INFRINGE ANY RIGHTS OF THIRD PARTIES (INCLUDING WITHOUT LIMITATION ANY
14 INTELLECTUAL PROPERTY RIGHTS INCLUDING PATENT, COPYRIGHT OR TRADEMARK
15 RIGHTS) OR (B) ANY IMPLIED WARRANTIES OF MERCHANTABILITY, FITNESS FOR A
16 PARTICULAR PURPOSE, TITLE OR NON-INFRINGEMENT. IN NO EVENT WILL GENIVI BE
17 LIABLE FOR ANY LOSS OF PROFITS, LOSS OF BUSINESS, LOSS OF USE OF DATA,
18 INTERRUPTION OF BUSINESS, OR FOR ANY OTHER DIRECT, INDIRECT, SPECIAL OR
19 EXEMPLARY, INCIDENTAL, PUNITIVE OR CONSEQUENTIAL DAMAGES OF ANY KIND, IN
20 CONTRACT OR IN TORT, IN CONNECTION WITH THIS DOCUMENT OR THE
21 INFORMATION CONTAINED HEREIN, EVEN IF ADVISED OF THE POSSIBILITY OF SUCH
22 LOSS OR DAMAGE. All Company, brand and product names may be trademarks that are the sole
23 property of their respective owners.
24

25 The above notice and this paragraph must be included on all copies of this document that are made.

26
27 GENIVI Alliance, Inc.
28 2400 Camino Ramon, Suite 375
29 San Ramon, CA 94583, USA
30

1 **Change history**

2 The following table shows the change history for this specification.

3 **Document revision change history**

Date	Version	CR#	Description
6.12.11	1.0		Initial version, C Müller, BMW
2.3.12	1.1		Update for release
31.1.13	2.0		Update for foton release
23.06.2014	3.0		Changes for Intrepid

4

5

1	Table of Contents	
2	1 Targeted Audience.....	8
3	2 Categories.....	9
4	3 Abbreviations	10
5	4 Format of the entries in this document	11
6	5 Standards	12
7	6 Component Overview.....	13
8	7 Component Interaction	14
9	User Interaction	14
10	System Interaction.....	29
11	Event Handling.....	46
12	Lifecycle.....	77
13	8 Headers.....	87
14	8.1 IAmCommandReceive	87
15	8.2 IAmCommandSend	89
16		

1 **List of Figures**

2 *<<List here any figures that are used in this document and be sure to right click and select 'update field' after any additions or*
3 *changes>>*
4
5
6

1 List of Tables

2 *«List here any tables that are used in this document and be sure to right click and select 'update field' after any additions or*
3 *changes»*

4
5
6 Table 1 – Referenced GENIVI Alliance Documents **Fehler! Textmarke nicht definiert.**
7 Table 2 – Referenced External Documents **Fehler! Textmarke nicht definiert.**
8 Table 3 – Acronyms and Abbreviations **Fehler! Textmarke nicht definiert.**
9

10
11
12 *«Document Overview – Delete when this document is completed.*
13 *The goal of the Component Design Document is to capture the architecture and specification information of a*
14 *specific component. Information should be added incrementally. It is then refined and updated consistently. Once*
15 *all information has been completed and this document has been reviewed, it then becomes the final version of the*
16 *Component Design Document for the applicable component.»*

1 Introduction

This document describes general requirements on the platform, all external standards and all the components of the GENIVI platform release.

1 Targeted Audience

Anyone wishing to apply for compliance should have this document at hand, as it complements the GENIVI Platform Compliance Statement document.

2 Categories

The compliance requirements within the GENIVI compliance program fall into the following general categories:

Standards

The Standards list the compliance requirements that refer to standards external to GENIVI

Components from GENIVI component list, that can be of the following compliance levels:

- PlaceholderComponent, as described in GENIVI Compliance Explanation
- AbstractComponent, as described in GENIVI Compliance Explanation
- SpecificComponent, as described in GENIVI Compliance Explanation

3 Abbreviations

In further text the following abbreviations (ABB) will be used for forming the IDs:

- ST for Standards
- PC for PlaceholderComponent
- AC for AbstractComponent
- SC for SpecificComponent

4 Format of the entries in this document

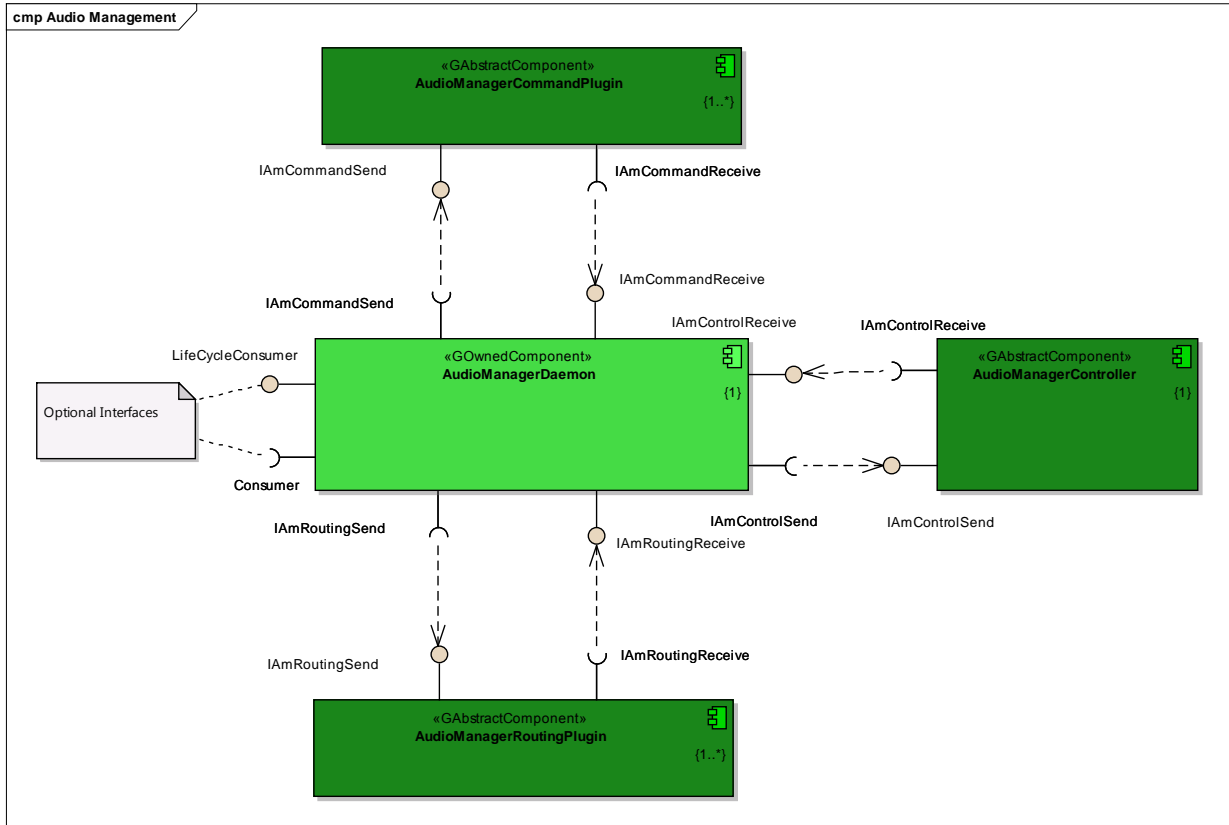
The entries pertaining to components have the following format:

Field Description	ID unique
ID	text formed as: <ABB>-<auto incrementing number>.<sub code>
Name	name with optional link (URL) to the external reference (e.g. The project home page)
Compliance Level	as defined in Categories.
Priority	as described in GENIVI Compliance Explanation
Description	textual clarification
Requirements	For PC, AC contains a table of requirements

5 Standards

GENIVI Compliance Release 1.0 does not require references to external standards.

6 Component Overview



7 Component Interaction

User Interaction

Type: **Package**
Status: Reworked. Version 1.0. Phase 1.0.
Package: Command Interface
Detail: Created on 09.09.2011. Last modified on 06.10.2011
GUID: {9D18749B-5F92-44c7-8EF6-737964AF8DA8}

Fred

Type: **Sequence**
Status: Proposed. Version 1.0. Phase 1.0.
Package: User Interaction *Keywords:*
Detail: Created on 17.08.2011. Last modified on 06.10.2011.
GUID: {97763DD2-107F-41af-A7C6-DB80015DDA6A}

Connections

Connector	Source	Target	Notes
Sequence change mainSourceSoundProperty Source -> Destination	Public Fred	Public <anonymous>	
Sequence change mutestate Source -> Destination	Public Fred	Public <anonymous>	
Sequence change sinkSoundProperty Source -> Destination	Public Fred	Public <anonymous>	
Sequence change systemProperty Source -> Destination	Public Fred	Public <anonymous>	
Sequence change volume Source -> Destination	Public Fred	Public <anonymous>	
Sequence connect Source -> Destination	Public Fred	Public <anonymous>	
Sequence disconnect Source -> Destination	Public Fred	Public <anonymous>	
Sequence increment/decrement volume Source -> Destination	Public Fred	Public <anonymous>	

c_User_Initiated_Connection

Type: Package
Status: Reworked. Version 1.0. Phase 1.0.
Package: User Interaction
Detail: Created on 16.08.2011. Last modified on 06.10.2011
GUID: {70025314-679D-4a4b-9708-C9A0837510A8}

c User Initiated Connection - (Interaction diagram)

Created By: christian on 16.08.2011
Last Modified: 24.10.2011
Version: 1.0. **Locked:** False
GUID: {95B56152-5783-40a5-8B40-F666E90907F1}

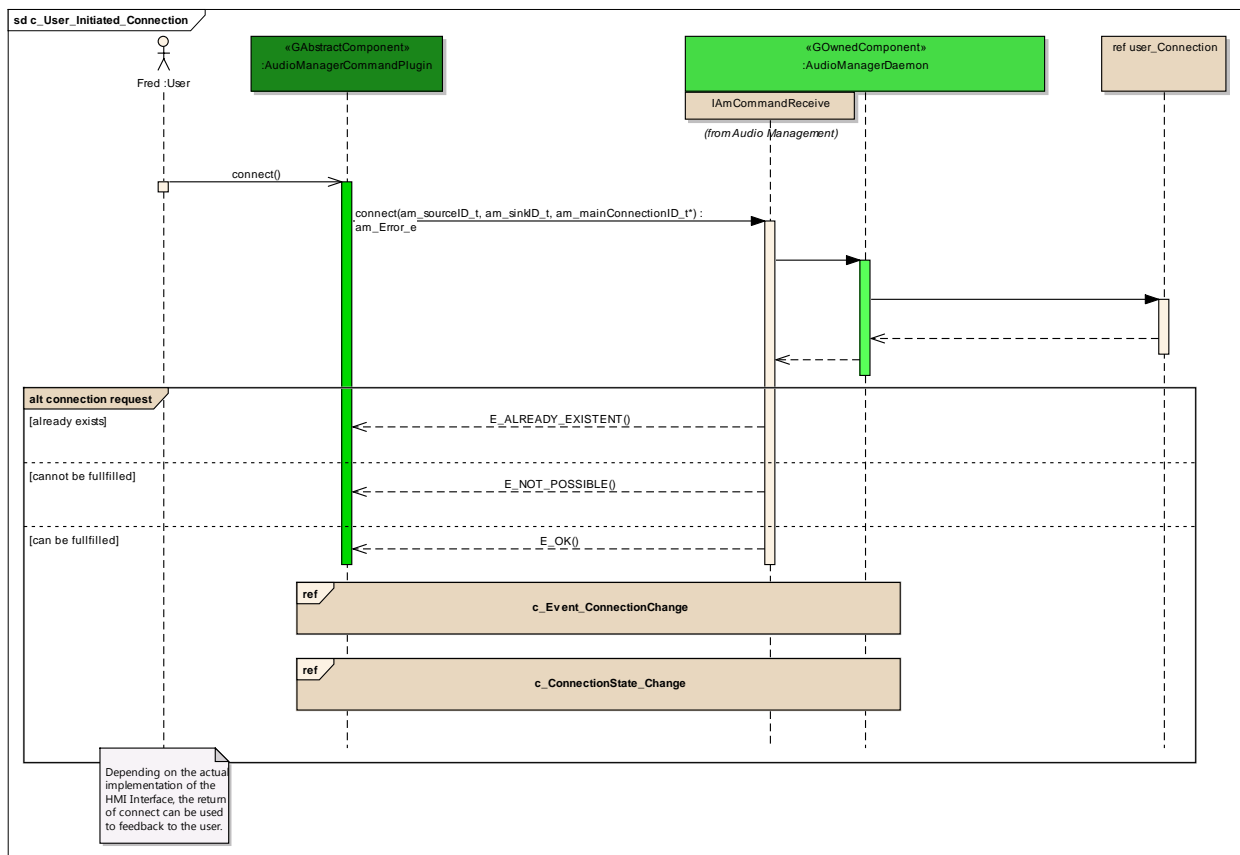


Figure: 1

c_ConnectionState_Change

Type: InteractionOccurrence
Status: Proposed. Version 1.0. Phase 1.0.
Package: c_User_Initiated_Connection **Keywords:**
Detail: Created on 12.09.2011. Last modified on 12.09.2011.
GUID: {7752FC0B-0EB6-46ec-A349-AE6A9D03AE6B}

c_Event_ConnectionChange

Type: **InteractionOccurrence**
Status: Proposed. Version 1.0. Phase 1.0.
Package: c_User_Initiated_Connection **Keywords:**
Detail: Created on 12.09.2011. Last modified on 06.10.2011.
GUID: {17D9B340-2582-4323-878D-DEF9ECE8832C}

connection request

Type: **InteractionFragment**
Status: Proposed. Version 1.0. Phase 1.0.
Package: c_User_Initiated_Connection **Keywords:**
Detail: Created on 16.08.2011. Last modified on 17.08.2011.
GUID: {7B680C24-80AA-451e-AC6A-FA45B3EC5417}

user_Connection

Type: **InteractionOccurrence**
Status: Proposed. Version 1.0. Phase 1.0.
Package: c_User_Initiated_Connection **Keywords:**
Detail: Created on 16.08.2011. Last modified on 07.10.2011.
GUID: {7CD76924-6596-463a-B2B4-C99E83E9354C}

Connections

Connector	Source	Target	Notes
<u>Sequence</u> Source -> Destination	Public <anonymous>	Public user_Connection	
<u>Sequence</u> Source -> Destination	Public user_Connection	Public <anonymous>	

c_User_Initiated_Disconnection

Type: **Package**
Status: Reworked. Version 1.0. Phase 1.0.
Package: User Interaction
Detail: Created on 17.08.2011. Last modified on 06.10.2011

GUID: {63DBF2AE-8055-4fe9-A255-A91D1D1E2B7F}

c User Initiated Disconnection - (Interaction diagram)

Created By: christian on 17.08.2011

Last Modified: 24.10.2011

Version: 1.0. *Locked:* False

GUID: {88B0729B-1788-4147-9A2C-F1E38092A9FF}

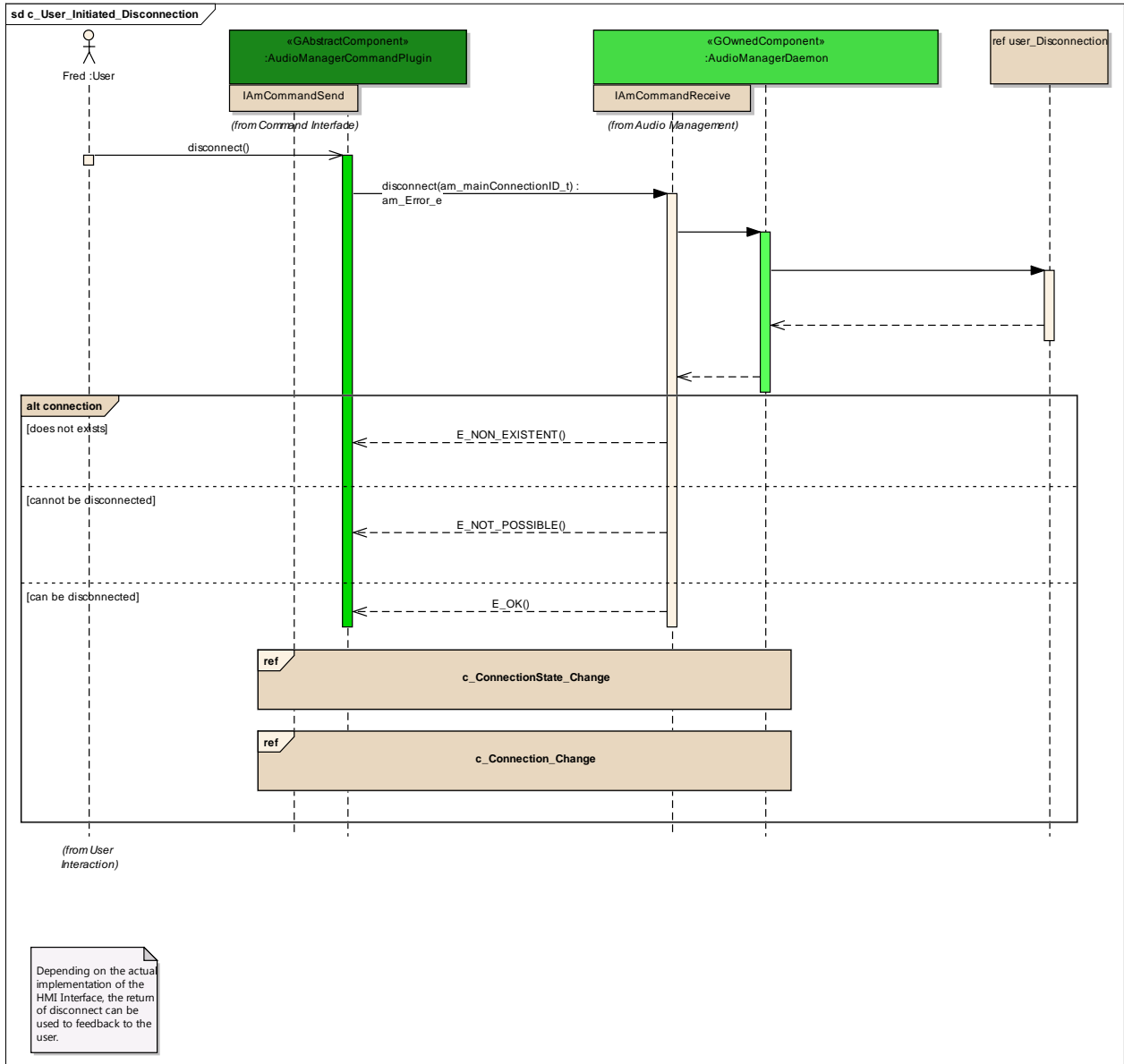


Figure: 2

c_ConnectionState_Change

Type: **InteractionOccurrence**

Status: Proposed. Version 1.0. Phase 1.0.

Package: c_User_Initiated_Disconnection *Keywords:*

Detail: Created on 12.09.2011. Last modified on 12.09.2011.

GUID: {D2D79E77-5ACA-4638-B582-0373643F19E5}

c_Connection_Change

Type: **InteractionOccurrence**
Status: Proposed. Version 1.0. Phase 1.0.
Package: c_User_Initiated_Disconnection **Keywords:**
Detail: Created on 12.09.2011. Last modified on 12.09.2011.
GUID: {B5F9C12E-30A3-4ee4-AE9F-60A66D6AF25B}

connection

Type: **InteractionFragment**
Status: Proposed. Version 1.0. Phase 1.0.
Package: c_User_Initiated_Disconnection **Keywords:**
Detail: Created on 17.08.2011. Last modified on 17.08.2011.
GUID: {2D9585D6-B028-4b7d-B538-AB978DBAB7CA}

user_Disconnection

Type: **InteractionOccurrence**
Status: Proposed. Version 1.0. Phase 1.0.
Package: c_User_Initiated_Disconnection **Keywords:**
Detail: Created on 17.08.2011. Last modified on 07.10.2011.
GUID: {A8528E3B-B09C-4b74-9143-DEFCD CDC64A4}

Connections

Connector	Source	Target	Notes
<u>Sequence</u> Source -> Destination	Public <anonymous>	Public user_Disconnection	
<u>Sequence</u> Source -> Destination	Public user_Disconnection	Public <anonymous>	

c_User_Initiated_MuteStateChange

Type: Package
Status: Reworked. Version 1.0. Phase 1.0.
Package: User Interaction
Detail: Created on 22.09.2011. Last modified on 06.10.2011
GUID: {313A0836-A2D7-4110-8815-B3A5C2B55687}

c User Initiated MuteStateChange - (Interaction diagram)

Created By: christian on 22.09.2011
Last Modified: 24.10.2011
Version: 1.0. *Locked:* False
GUID: {DD57EC5A-3E58-443e-9DF0-9A006AE4513C}

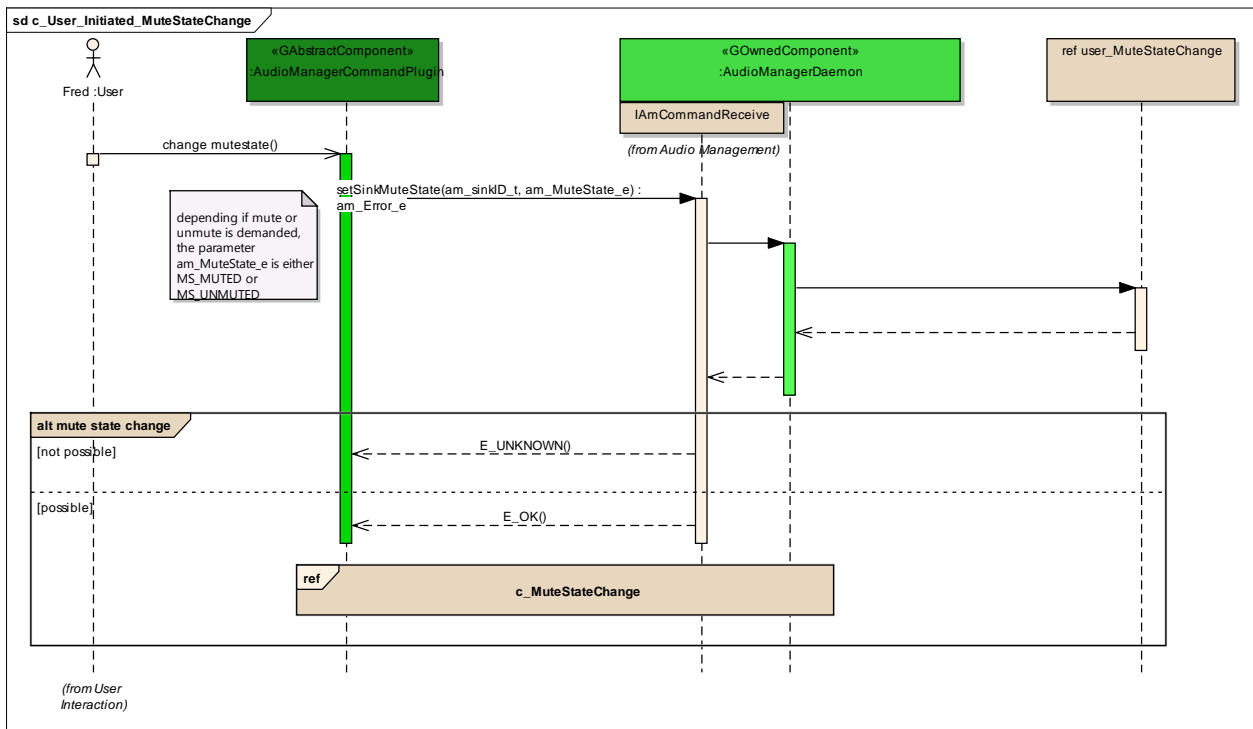


Figure: 3

c_MuteStateChange

Type: InteractionOccurrence
Status: Proposed. Version 1.0. Phase 1.0.
Package: c_User_Initiated_MuteStateChange **Keywords:**
Detail: Created on 22.09.2011. Last modified on 22.09.2011.
GUID: {FF0C380D-F8EF-4542-B307-0BB1437A8D47}

mute state change

Type: InteractionFragment
Status: Proposed. Version 1.0. Phase 1.0.
Package: c_User_Initiated_MuteStateChange **Keywords:**

Detail: Created on 22.09.2011. Last modified on 22.09.2011.
GUID: {2379DFC7-C3EF-47e9-B7AF-AAC2BAA83899}

user_MuteStateChange

Type: **InteractionOccurrence**
Status: Proposed. Version 1.0. Phase 1.0.
Package: c_User_Initiated_MuteStateChange *Keywords:*
Detail: Created on 22.09.2011. Last modified on 07.10.2011.
GUID: {73AD2CFF-7EAE-4382-B913-35233983459D}

Connections

Connector	Source	Target	Notes
Sequence Source -> Destination	Public <anonymous>	Public user_MuteStateChange	
Sequence Source -> Destination	Public user_MuteStateChange	Public <anonymous>	

c_User_Initiated_AbsoluteVolumeChange

Type: **Package**
Status: Reworked. Version 1.0. Phase 1.0.
Package: User Interaction
Detail: Created on 17.08.2011. Last modified on 06.10.2011
GUID: {22E3E917-BF4E-4eb2-BC59-3DFEEDA9AEE2}

c User Initiated AbsoluteVolumeChange - (Interaction diagram)

Created By: christian on 17.08.2011
Last Modified: 24.10.2011
Version: 1.0. *Locked:* False
GUID: {94DC5166-2203-433e-B25D-92E85B567878}

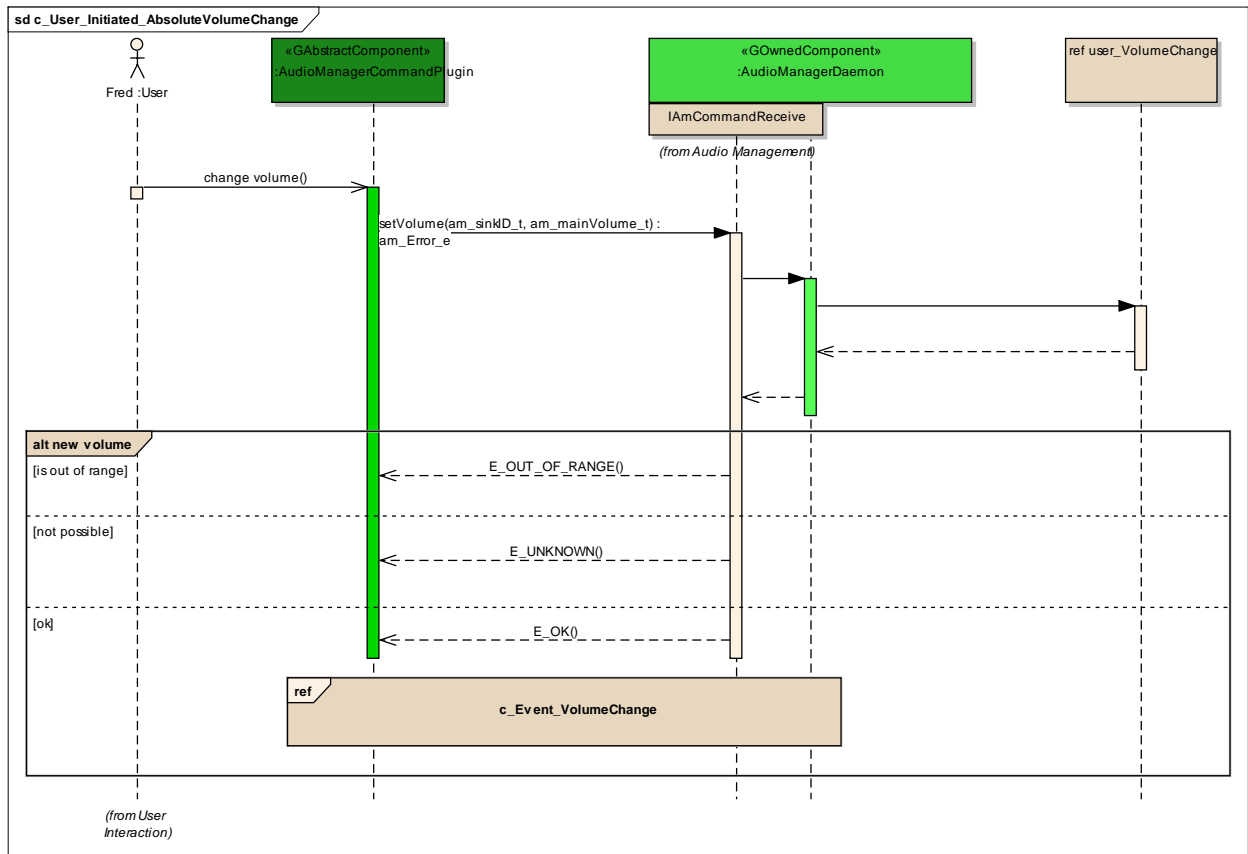


Figure: 4

c_Event_VolumeChange

Type: **InteractionOccurrence**
 Status: Proposed. Version 1.0. Phase 1.0.
 Package: c_User_Initiated_AbsoluteVolumeChange **Keywords:**
 Detail: Created on 12.09.2011. Last modified on 07.10.2011.
 GUID: {055D869F-6F23-4e03-8172-A1F770B90506}

new volume

Type: **InteractionFragment**
 Status: Proposed. Version 1.0. Phase 1.0.
 Package: c_User_Initiated_AbsoluteVolumeChange **Keywords:**
 Detail: Created on 17.08.2011. Last modified on 17.08.2011.
 GUID: {2330569F-E7C9-45a9-9065-99C074549140}

user_VolumeChange

Type: **InteractionOccurrence**
Status: Proposed. Version 1.0. Phase 1.0.
Package: c_User_Initiated_AbsoluteVolumeChange *Keywords:*
Detail: Created on 17.08.2011. Last modified on 07.10.2011.
GUID: {9AC84A6A-A6B9-4ea9-A948-04B7EDAE6988}

Connections

Connector	Source	Target	Notes
Sequence Source -> Destination	Public <anonymous>	Public user_VolumeChange	
Sequence Source -> Destination	Public user_VolumeChange	Public <anonymous>	

c_User_Initiated_RelativeVolumeChange

Type: **Package**
Status: Reworked. Version 1.0. Phase 1.0.
Package: User Interaction
Detail: Created on 06.10.2011. Last modified on 06.10.2011
GUID: {D80A962F-A633-4246-A62F-35114D54F02E}

c User Initiated RelativeVolumeChange - (Interaction diagram)

Created By: christian on 06.10.2011
Last Modified: 24.10.2011
Version: 1.0. *Locked:* False
GUID: {A43A298D-6B17-4a64-9D18-C70E252504F1}

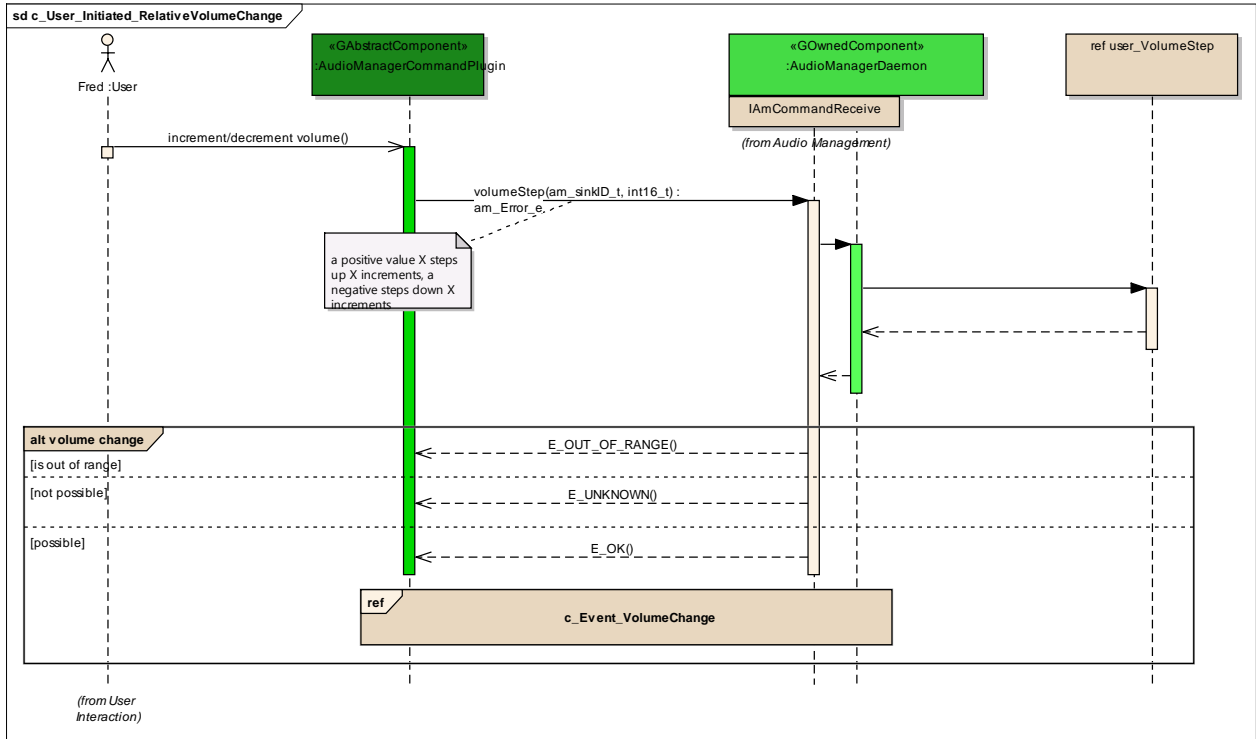


Figure: 5

c_Event_VolumeChange

Type: **InteractionOccurrence**
 Status: Proposed. Version 1.0. Phase 1.0.
 Package: c_User_Initiated_RelativeVolumeChange **Keywords:**
 Detail: Created on 06.10.2011. Last modified on 07.10.2011.
 GUID: {D61ED1BC-40DE-4dd9-A7FA-8194DD0E8A75}

user_VolumeStep

Type: **InteractionOccurrence**
 Status: Proposed. Version 1.0. Phase 1.0.
 Package: c_User_Initiated_RelativeVolumeChange **Keywords:**
 Detail: Created on 06.10.2011. Last modified on 07.10.2011.
 GUID: {A0C5C391-E4D4-4c9b-98E1-ECAD2ABA4B61}

Connections

Connector	Source	Target	Notes
Sequence Source -> Destination	Public <anonymous>	Public user_VolumeStep	

Connector	Source	Target	Notes
Sequence Source -> Destination	Public user_VolumeStep	Public <anonymous>	

volume change

Type: **InteractionFragment**
 Status: Proposed. Version 1.0. Phase 1.0.
 Package: c_User_Initiated_RelativeVolumeChange *Keywords:*
 Detail: Created on 06.10.2011. Last modified on 06.10.2011.
 GUID: {04E2C2B7-7AFE-4360-B63B-61CB664BB93B}

c_User_Initiated_SourceSoundPropertyChange

Type: **Package**
 Status: Reworked. Version 1.0. Phase 1.0.
 Package: User Interaction
 Detail: Created on 12.09.2011. Last modified on 06.10.2011
 GUID: {F9684481-DF94-452a-893F-D5FAEE6E3630}

c User Initiated SourceSoundPropertyChange - (Interaction diagram)

Created By: christian on 12.09.2011
 Last Modified: 24.10.2011
 Version: 1.0. Locked: False
 GUID: {AC6E81FC-3A19-45d3-AEEB-546E7F4A2664}

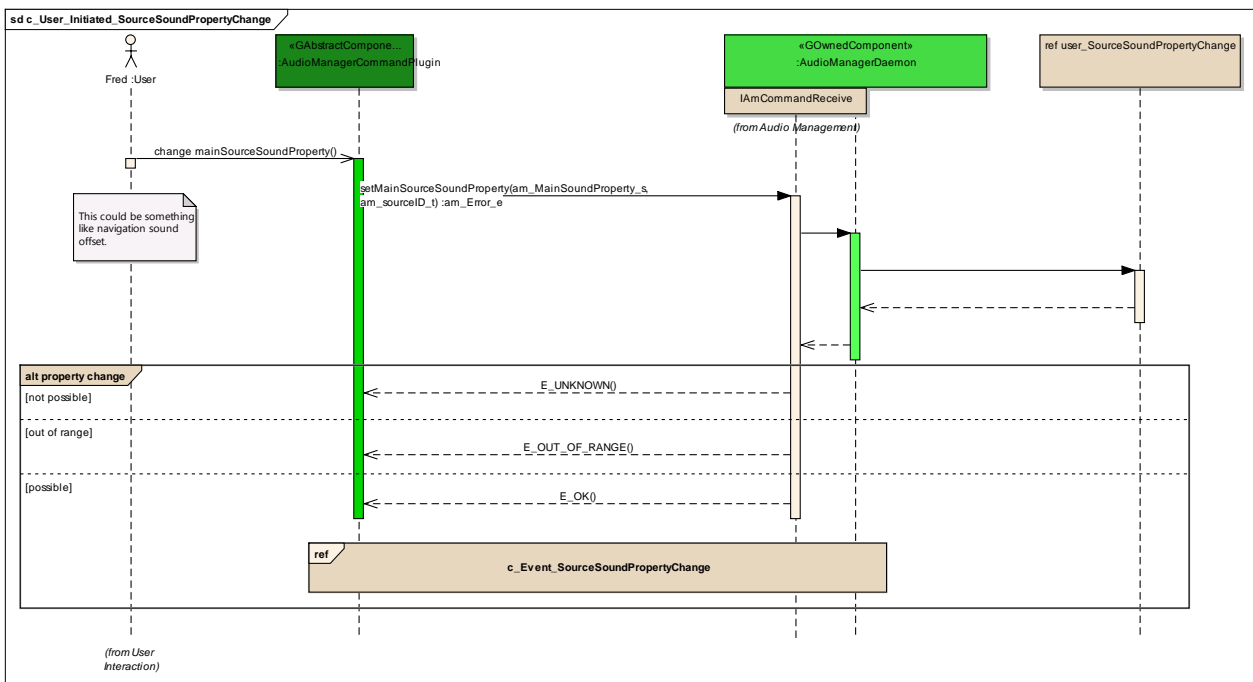


Figure: 6

c_Event_SourceSoundPropertyChange

Type: **InteractionOccurrence**
Status: Proposed. Version 1.0. Phase 1.0.
Package: c_User_Initiated_SourceSoundPropertyChange **Keywords:**
Detail: Created on 12.09.2011. Last modified on 07.10.2011.
GUID: {61ACC93A-DFB4-420e-A047-CB82B5A9A149}

property change

Type: **InteractionFragment**
Status: Proposed. Version 1.0. Phase 1.0.
Package: c_User_Initiated_SourceSoundPropertyChange **Keywords:**
Detail: Created on 12.09.2011. Last modified on 12.09.2011.
GUID: {C1DCEF6A-E84B-46b5-8B83-F62B55A85B91}

user_SourceSoundPropertyChange

Type: **InteractionOccurrence**
Status: Proposed. Version 1.0. Phase 1.0.
Package: c_User_Initiated_SourceSoundPropertyChange **Keywords:**
Detail: Created on 12.09.2011. Last modified on 07.10.2011.
GUID: {C11B28BE-50AE-4255-9160-5B7642A437B5}

Connections

Connector	Source	Target	Notes
<u>Sequence</u> Source -> Destination	Public <anonymous>	Public user_SourceSoundProp ertyChange	
<u>Sequence</u> Source -> Destination	Public user_SourceSoundProp ertyChange	Public <anonymous>	

c_User_Initiated_SinkSoundPropertyChange

Type: **Package**

Status: Reworked. Version 1.0. Phase 1.0.
Package: User Interaction
Detail: Created on 12.09.2011. Last modified on 06.10.2011
GUID: {AE8449C5-4198-4c6d-BDC3-48D43A9EB6D1}

c User Initiated SinkSoundPropertyChange - (Interaction diagram)

Created By: christian on 12.09.2011
Last Modified: 24.10.2011
Version: 1.0. *Locked:* False
GUID: {C76F660C-28B8-4cd4-818C-2C3B832710AA}

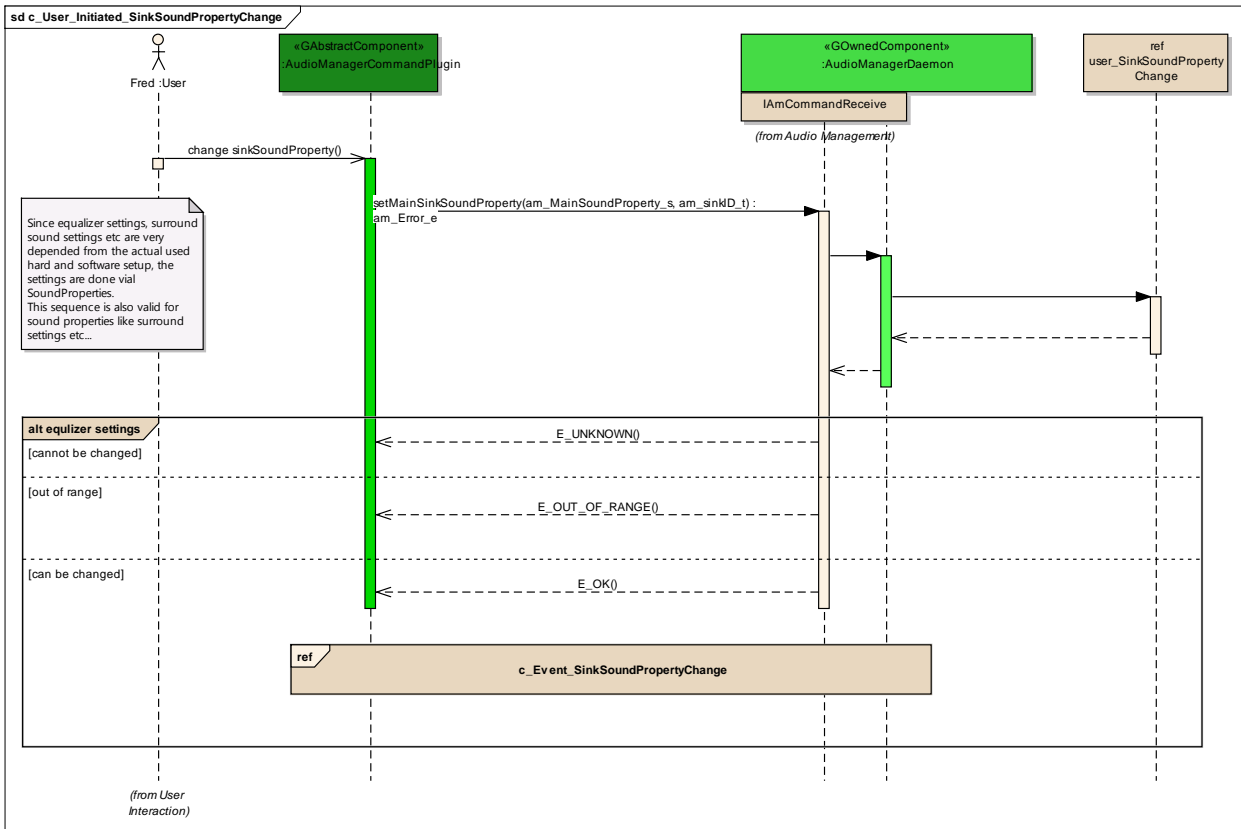


Figure: 7

c_Event_SinkSoundPropertyChange

Type: **InteractionOccurrence**
Status: Proposed. Version 1.0. Phase 1.0.
Package: c_User_Initiated_SinkSoundPropertyChange *Keywords:*
Detail: Created on 12.09.2011. Last modified on 07.10.2011.
GUID: {CE7A2B37-A1A2-49e6-91A4-D1215E303899}

equalizer settings

Type: **InteractionFragment**

Status: Proposed. Version 1.0. Phase 1.0.
Package: c_User_Initiated_SinkSoundPropertyChange *Keywords:*
Detail: Created on 12.09.2011. Last modified on 12.09.2011.
GUID: {8010BFF9-7DF4-439f-BF56-95F342C86405}

user_SinkSoundProperty Change

Type: **InteractionOccurrence**
Status: Proposed. Version 1.0. Phase 1.0.
Package: c_User_Initiated_SinkSoundPropertyChange *Keywords:*
Detail: Created on 12.09.2011. Last modified on 07.10.2011.
GUID: {0CF14F1B-626B-4559-8D7D-C9A3496DE42F}

Connections

Connector	Source	Target	Notes
Sequence Source -> Destination	Public <anonymous>	Public user_SinkSoundPropert y Change	
Sequence Source -> Destination	Public user_SinkSoundPropert y Change	Public <anonymous>	

c_User_Initiated_SystemPropertyChange

Type: **Package**
Status: Reworked. Version 1.0. Phase 1.0.
Package: User Interaction
Detail: Created on 06.10.2011. Last modified on 06.10.2011
GUID: {2B5813F8-0C9E-4af3-8AB2-9BD06B1B0C7E}

c_User_Initiated_SystemPropertyChange - (Interaction diagram)

Created By: christian on 06.10.2011
Last Modified: 24.10.2011
Version: 1.0. *Locked:* False
GUID: {0A69047E-7BA5-444a-A274-4A81174A80A2}

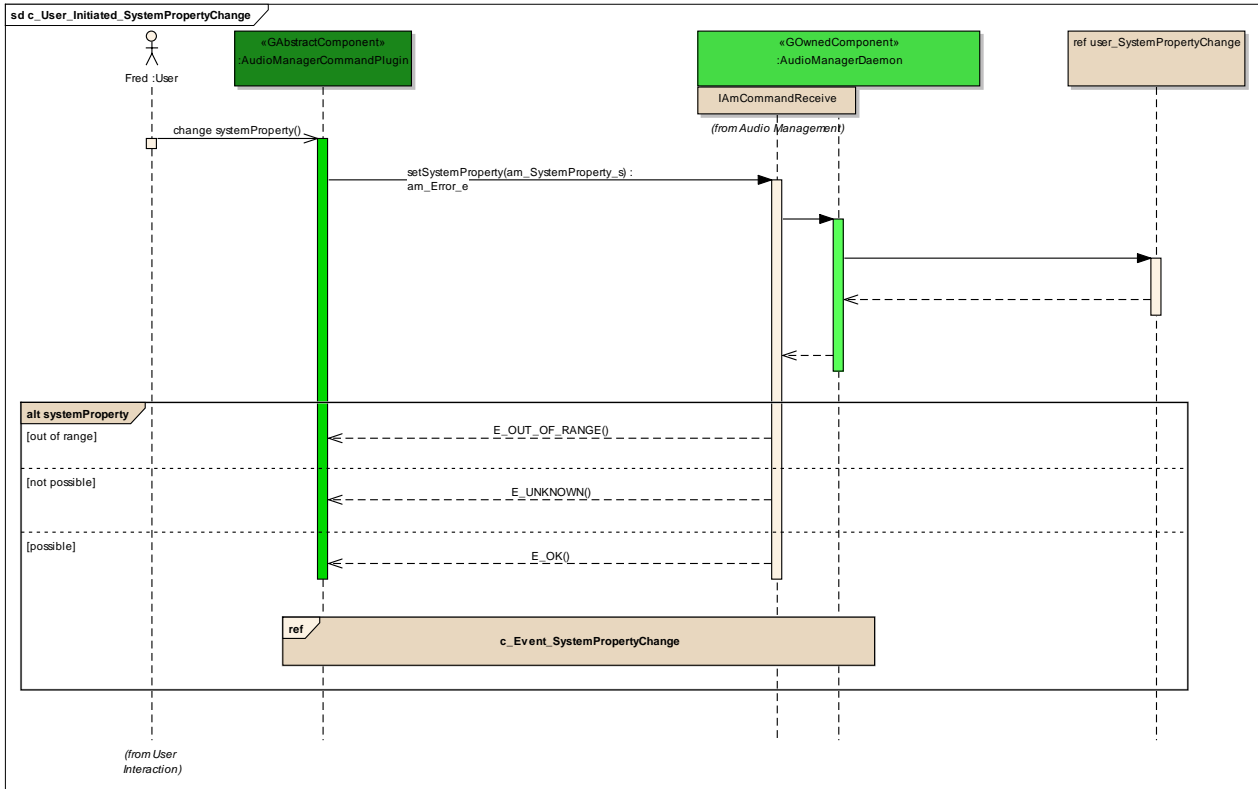


Figure: 8

c_Event_SystemPropertyChange

Type: **InteractionOccurrence**
 Status: Proposed. Version 1.0. Phase 1.0.
 Package: c_User_Initiated_SystemPropertyChange **Keywords:**
 Detail: Created on 06.10.2011. Last modified on 06.10.2011.
 GUID: {245E2B64-FC22-4ac3-A593-0C7EB6177095}

systemProperty

Type: **InteractionFragment**
 Status: Proposed. Version 1.0. Phase 1.0.
 Package: c_User_Initiated_SystemPropertyChange **Keywords:**
 Detail: Created on 06.10.2011. Last modified on 06.10.2011.
 GUID: {F0F3EDBD-8D09-41d6-9B71-59664C1E0730}

user_SystemPropertyChange

Type: **InteractionOccurrence**

Status: Proposed. Version 1.0. Phase 1.0.
Package: c_User_Initiated_SystemPropertyChange *Keywords:*
Detail: Created on 06.10.2011. Last modified on 07.10.2011.
GUID: {72C5D8C1-4CEB-48ec-91A3-9215F366C36C}

Connections

Connector	Source	Target	Notes
Sequence Source -> Destination	Public <anonymous>	Public user_SystemPropertyChange	
Sequence Source -> Destination	Public user_SystemPropertyChange	Public <anonymous>	

System Interaction

Type: **Package**
Status: Reworked. Version 1.0. Phase 1.0.
Package: Command Interface
Detail: Created on 23.09.2011. Last modified on 07.10.2011
GUID: {E6613093-2F0C-44a5-9AFA-AE0654D1F893}

c_System_ChangeMainSinkNotificationConfiguration

Type: **Package**
Status: Proposed. Version 1.0. Phase 1.0.
Package: System Interaction
Detail: Created on 29.01.2013. Last modified on 29.01.2013
GUID: {DD8E4670-8D41-4072-9D1F-E0F317785B4B}

c_System_ChangeMainSinkNotificationConfiguration - (Interaction diagram)

Created By: q232968 on 29.01.2013
Last Modified: 29.01.2013
Version: 1.0. *Locked:* False
GUID: {93208DF6-0C54-41c2-8DDA-204EC4BB4851}

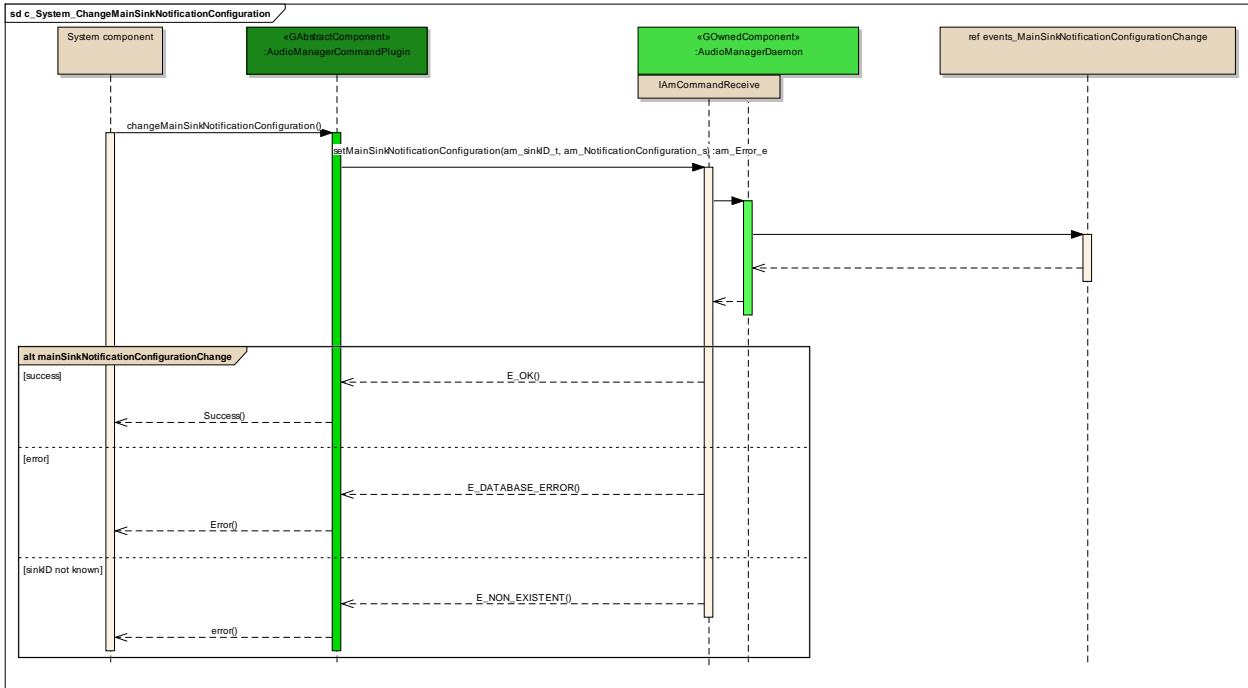


Figure: 9

events_MainSinkNotificationConfigurationChange

Type: **InteractionOccurrence**
 Status: Proposed. Version 1.0. Phase 1.0.
 Package: c_System_ChangeMainSinkNotificationConfiguration *Keywords:*
 Detail: Created on 29.01.2013. Last modified on 29.01.2013.
 GUID: {3EBCEB91-EFB7-48f9-8741-64FB5CFA17D4}

Connections

Connector	Source	Target	Notes
Sequence Source -> Destination	Public <anonymous>	Public events_MainSinkNotifi cationConfigurationCha nge	
Sequence Source -> Destination	Public events_MainSinkNotifi cationConfigurationCha nge	Public <anonymous>	

mainSinkNotificationConfigurationChange

Type: **InteractionFragment**
 Status: Proposed. Version 1.0. Phase 1.0.
 Package: c_System_ChangeMainSinkNotificationConfiguration *Keywords:*

Detail: Created on 29.01.2013. Last modified on 29.01.2013.
GUID: {AFB3A353-625D-4ce8-A771-3D997029F2CF}

c_System_ChangeMainSourceNotificationConfiguration

Type: **Package**
Status: Proposed. Version 1.0. Phase 1.0.
Package: System Interaction
Detail: Created on 29.01.2013. Last modified on 29.01.2013
GUID: {A1E72B66-8859-486c-BE24-5F06767870D3}

c_System_ChangeMainSourceNotificationConfiguration - (Interaction diagram)

Created By: q232968 on 29.01.2013
Last Modified: 29.01.2013
Version: 1.0. *Locked:* False
GUID: {7DE00EDC-A664-4a7a-9998-E918333EFB29}

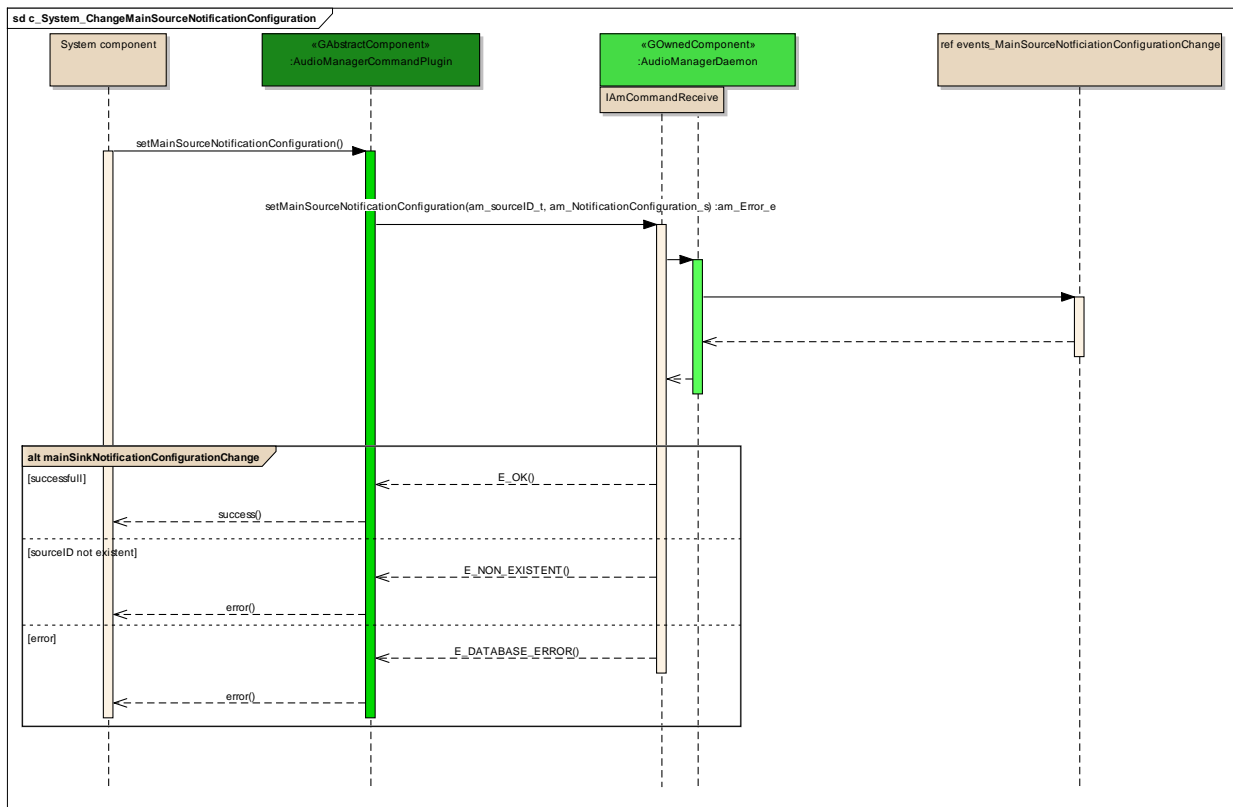


Figure: 10

events_MainSourceNotficiationConfigurationChange

Type: **InteractionOccurrence**
Status: Proposed. Version 1.0. Phase 1.0.

Package: c_System_ChangeMainSourceNotificationConfiguration *Keywords:*
Detail: Created on 29.01.2013. Last modified on 29.01.2013.
GUID: {0DDE88BB-B7B3-4e30-95C1-C1428551A414}

Connections

Connector	Source	Target	Notes
Sequence Source -> Destination	Public <anonymous>	Public events_MainSourceNot ficationConfigurationC hange	
Sequence Source -> Destination	Public events_MainSourceNot ficationConfigurationC hange	Public <anonymous>	

mainSinkNotificationConfigurationChange

Type: **InteractionFragment**
Status: Proposed. Version 1.0. Phase 1.0.
Package: c_System_ChangeMainSourceNotificationConfiguration *Keywords:*
Detail: Created on 29.01.2013. Last modified on 29.01.2013.
GUID: {86A8A558-E814-49a8-ADAB-DEC6D5A7F69D}

c_System_GetListOfSources

Type: **Package**
Status: Reworked. Version 1.0. Phase 1.0.
Package: System Interaction
Detail: Created on 07.10.2011. Last modified on 07.10.2011
GUID: {7E5659EF-687F-41e3-B80F-39B0CDF743B3}

c_System_GetListOfSources - (Interaction diagram)

Created By: christian on 07.10.2011
Last Modified: 07.10.2011
Version: 1.0. *Locked:* False
GUID: {4FAFA606-EBC6-404d-9B73-1E7B2FAF471E}

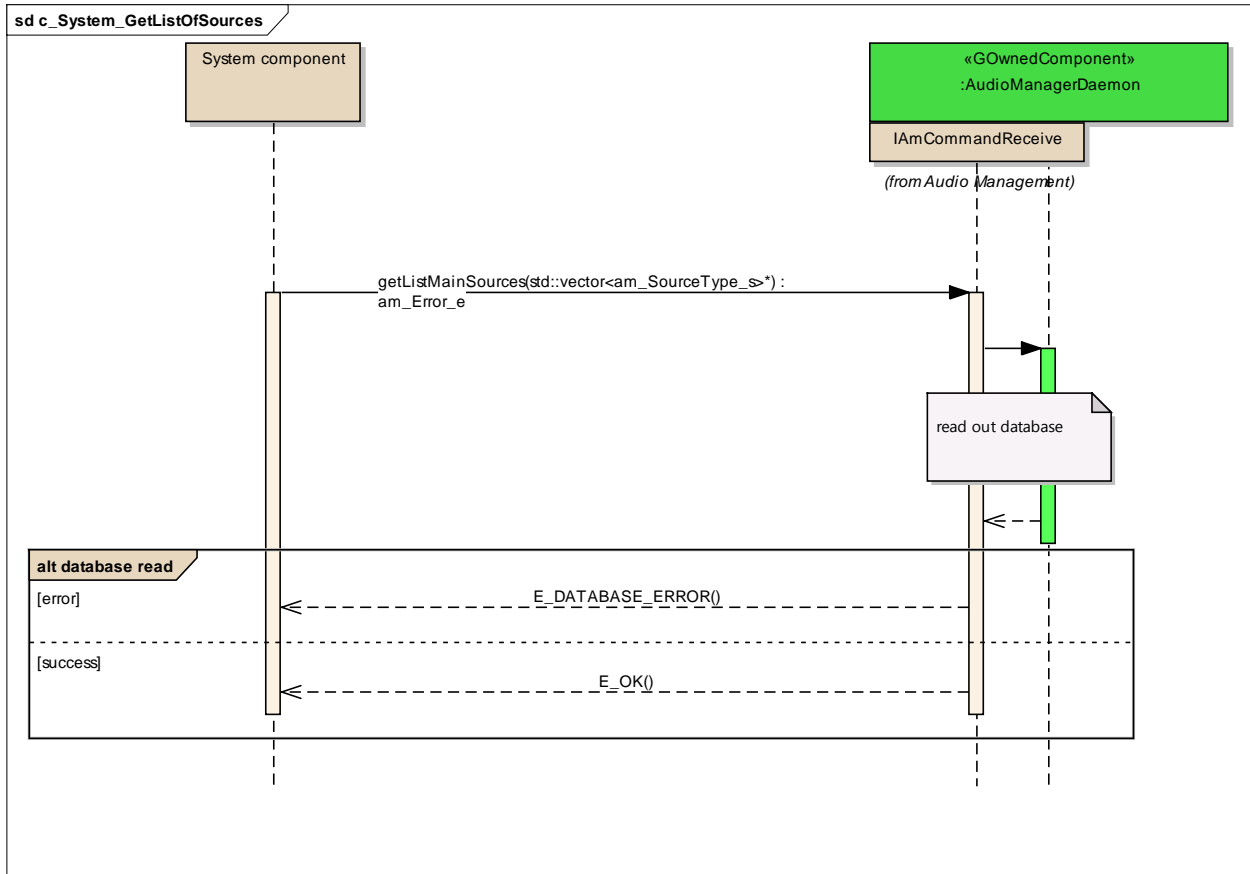


Figure: 11

database read

Type: **InteractionFragment**
 Status: Proposed. Version 1.0. Phase 1.0.
 Package: c_System_GetListOfSources *Keywords:*
 Detail: Created on 07.10.2011. Last modified on 07.10.2011.
 GUID: {B33518FF-89E6-48fe-A93F-529A1217854C}

c_System_GetListOfSinks

Type: **Package**
 Status: Reworked. Version 1.0. Phase 1.0.
 Package: System Interaction
 Detail: Created on 06.10.2011. Last modified on 06.10.2011
 GUID: {019211C9-CD5E-4b4c-B808-1BEFA70C1EFE}

c_System_GetListOfSinks - (Interaction diagram)

Created By: christian on 06.10.2011
 Last Modified: 06.10.2011

Version: 1.0. Locked: False
 GUID: {A1852DA1-5CD1-4ae2-ABB3-D5F3B9F29442}

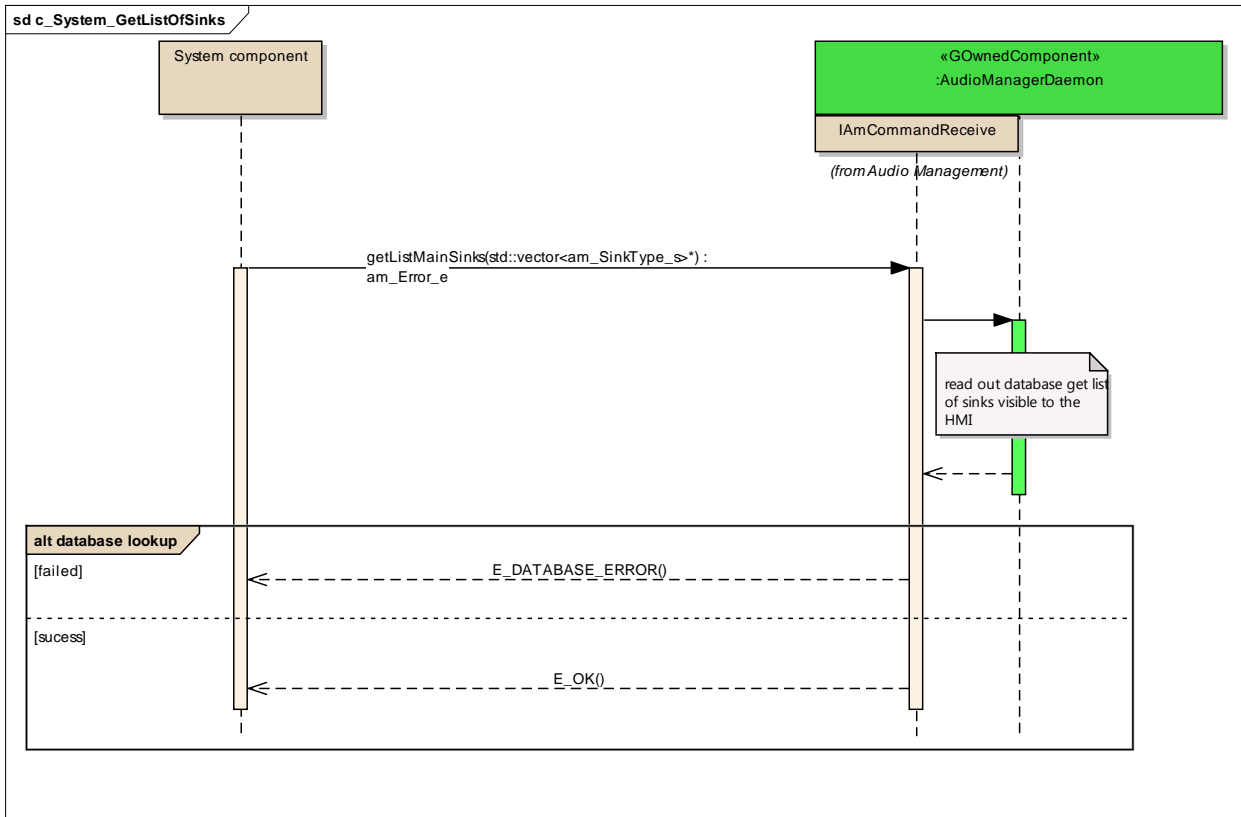


Figure: 12

database lookup

Type: **InteractionFragment**
 Status: Proposed. Version 1.0. Phase 1.0.
 Package: c_System_GetListOfSinks *Keywords:*
 Detail: Created on 06.10.2011. Last modified on 06.10.2011.
 GUID: {7B1D5385-CA34-4843-9383-8E466B0035E2}

c_System_GetListOfMainConnections

Type: **Package**
 Status: Reworked. Version 1.0. Phase 1.0.
 Package: System Interaction
 Detail: Created on 06.10.2011. Last modified on 07.10.2011
 GUID: {B5F42B83-46FF-419f-97EB-F46100C9ED97}

c_System_GetListOfMainConnections - (Interaction diagram)

Created By: christian on 06.10.2011

Last Modified: 06.10.2011
Version: 1.0. *Locked:* False
GUID: {8C0BC612-9C43-482a-8B5A-61F3380B9C5B}

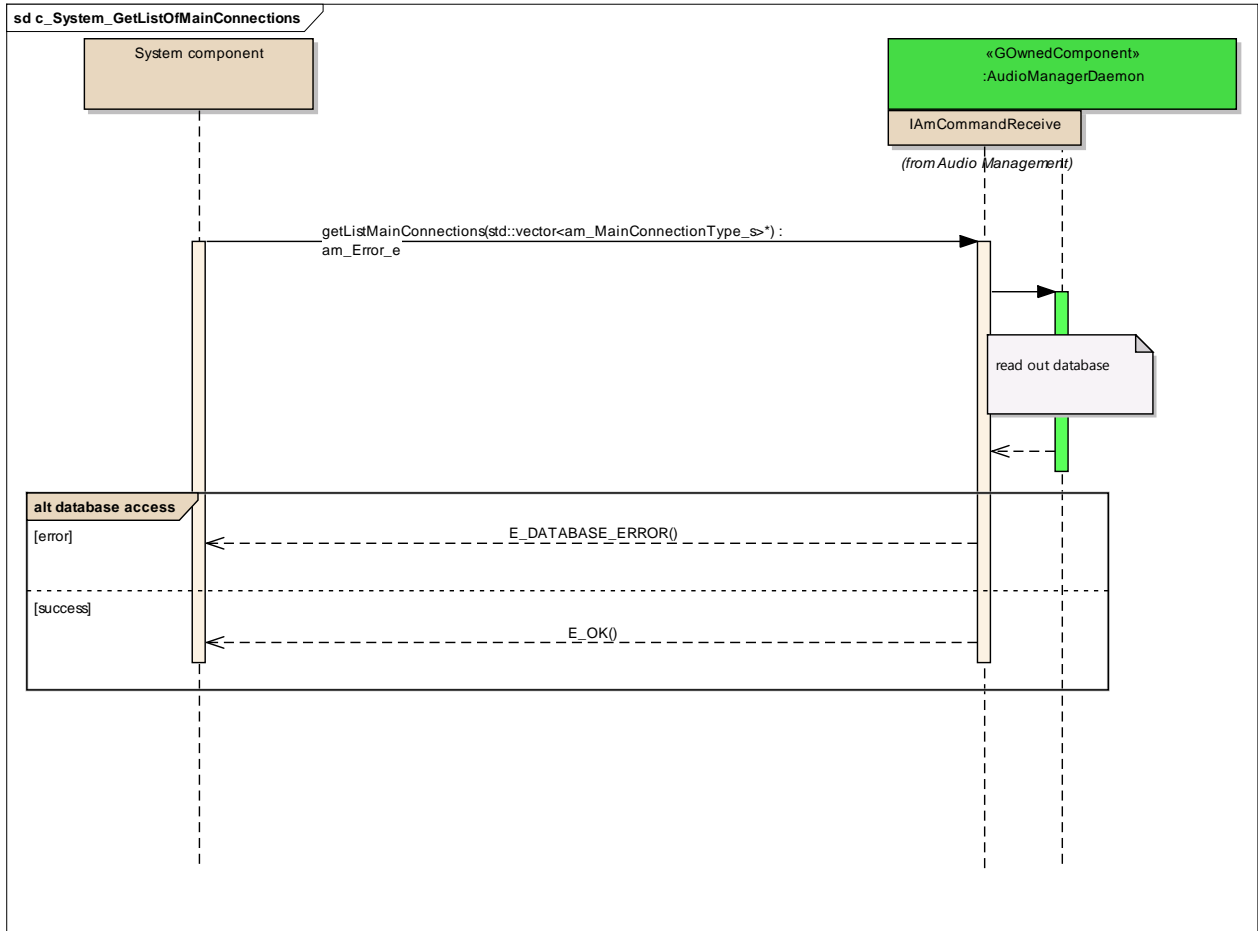


Figure: 13

database access

Type: **InteractionFragment**
Status: Proposed. Version 1.0. Phase 1.0.
Package: c_System_GetListOfMainConnections *Keywords:*
Detail: Created on 06.10.2011. Last modified on 06.10.2011.
GUID: {6CD533FE-84B1-4d78-805F-6F496B289AD7}

c_System_GetListOfMainSinkProperties

Type: **Package**
Status: Reworked. Version 1.0. Phase 1.0.
Package: System Interaction
Detail: Created on 06.10.2011. Last modified on 06.10.2011

GUID: {724AE4A9-9E74-464f-A4D4-611BA92ECD8E}

c_System_GetListOfMainSinkProperties - (Interaction diagram)

Created By: christian on 06.10.2011

Last Modified: 06.10.2011

Version: 1.0. Locked: False

GUID: {E1350A3A-EF48-410a-A803-FC83D18A18F2}

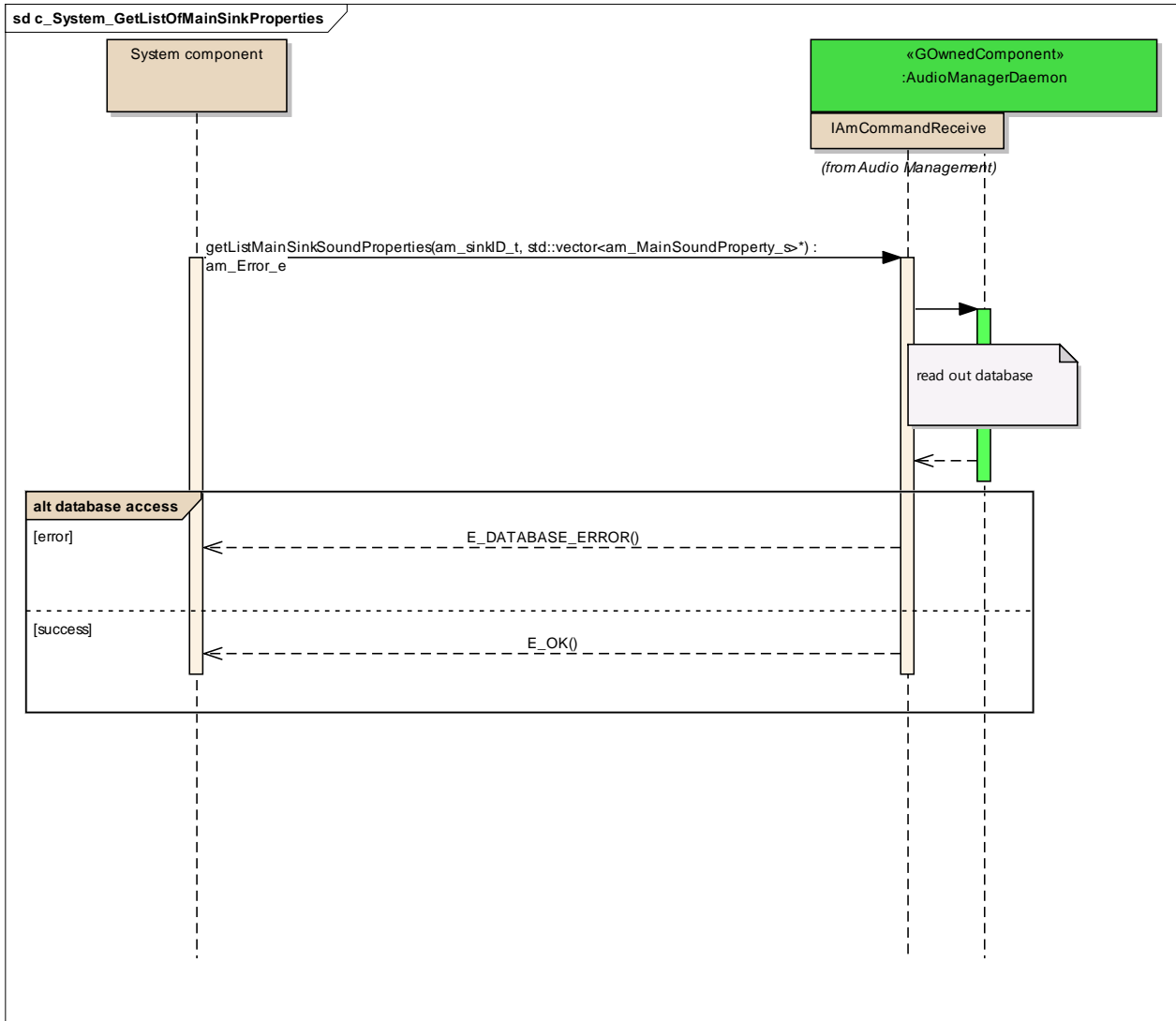


Figure: 14

database access

Type: **InteractionFragment**

Status: Proposed. Version 1.0. Phase 1.0.

Package: c_System_GetListOfMainSinkProperties **Keywords:**

Detail: Created on 06.10.2011. Last modified on 06.10.2011.

GUID: {10983A7A-608E-44fc-AB4A-BF21AFA2945E}

c_System_GetListOfMainSourceProperties

Type: Package
Status: Reworked. Version 1.0. Phase 1.0.
Package: System Interaction
Detail: Created on 06.10.2011. Last modified on 06.10.2011
GUID: {6959D888-084B-4e9d-BC1A-B805EC399366}

c_System_GetListOfMainSourceProperties - (Interaction diagram)

Created By: christian on 06.10.2011
Last Modified: 06.10.2011
Version: 1.0. **Locked:** False
GUID: {E4FEAF81-AABA-4761-BF2D-5C47909DBFBD}

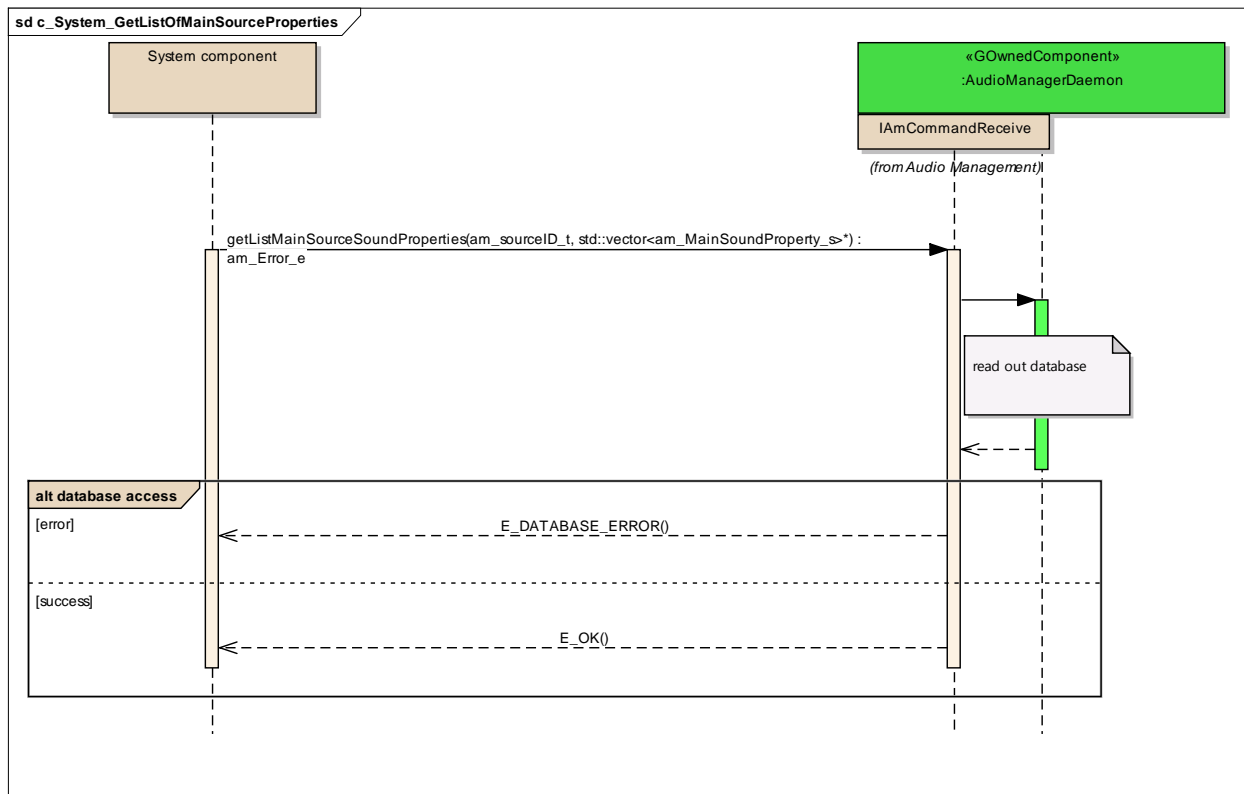


Figure: 15

database access

Type: InteractionFragment
Status: Proposed. Version 1.0. Phase 1.0.
Package: c_System_GetListOfMainSourceProperties **Keywords:**
Detail: Created on 06.10.2011. Last modified on 06.10.2011.
GUID: {1F1A8F3B-FDF2-4a85-BB2E-D372DF473202}

c_System_GetListSystemProperties

Type: **Package**
 Status: Reworked. Version 1.0. Phase 1.0.
 Package: System Interaction
 Detail: Created on 06.10.2011. Last modified on 06.10.2011
 GUID: {1D99A9BD-CE8C-43ee-B347-B60ED5058CA2}

c_System_GetListSystemProperties - (Interaction diagram)

Created By: christian on 06.10.2011
 Last Modified: 06.10.2011
 Version: 1.0. Locked: False
 GUID: {BFBEEF25-E6B5-495d-BED6-75C104E793BB}

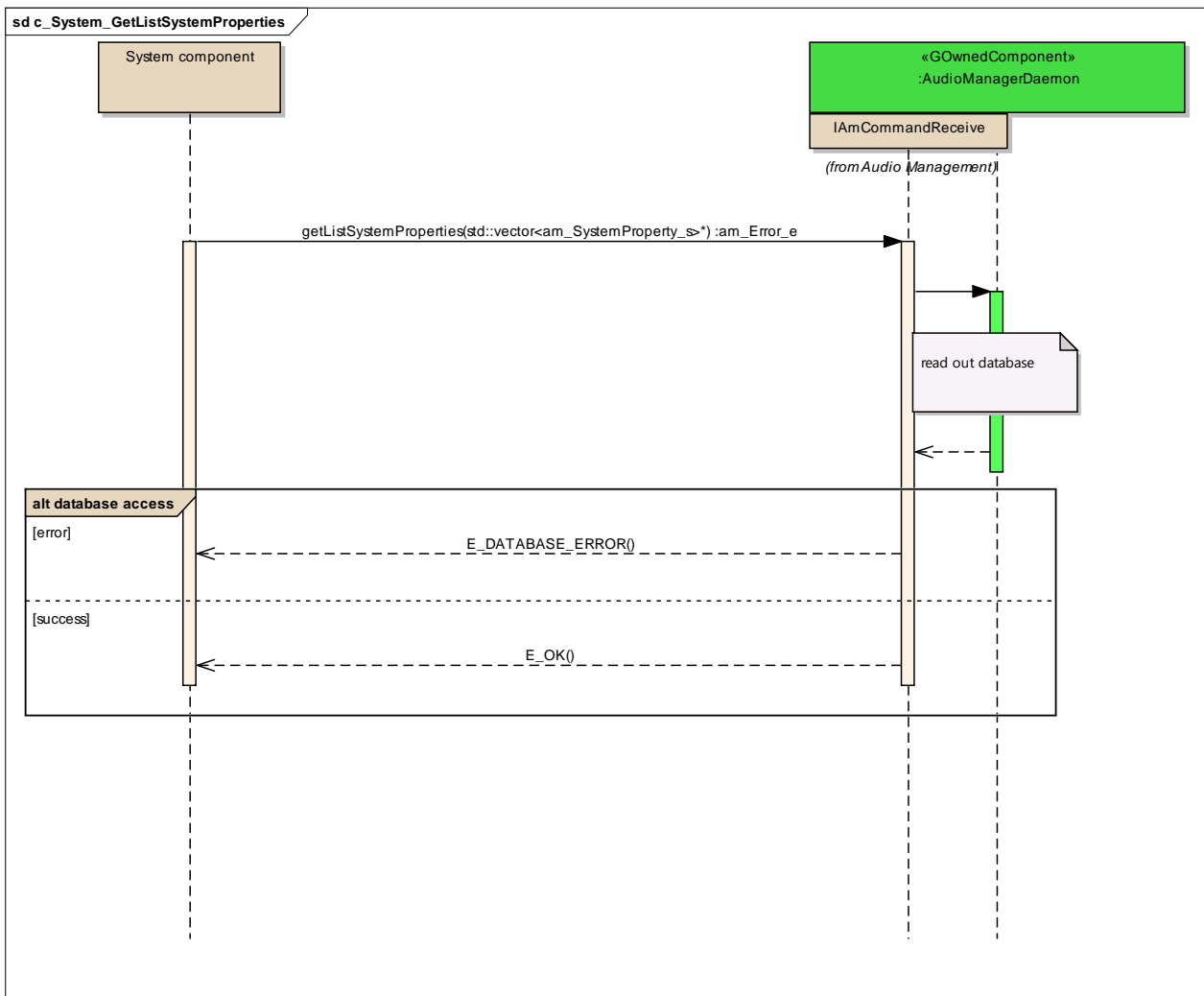


Figure: 16

database access

Type: **InteractionFragment**
Status: Proposed. Version 1.0. Phase 1.0.
Package: c_System_GetListSystemProperties *Keywords:*
Detail: Created on 06.10.2011. Last modified on 06.10.2011.
GUID: {D19D4628-1205-4206-B938-AC1F5C4017E4}

c_System_GetListOfSinkClasses

Type: **Package**
Status: Reworked. Version 1.0. Phase 1.0.
Package: System Interaction
Detail: Created on 06.10.2011. Last modified on 06.10.2011
GUID: {CB6C9923-9E48-4b3f-9F76-66AED9B0BC4F}

c_System_GetListOfSinkClasses - (Interaction diagram)

Created By: christian on 06.10.2011
Last Modified: 06.10.2011
Version: 1.0. *Locked:* False
GUID: {864B405B-81E2-4de8-AF22-06AFB4CBDD82}

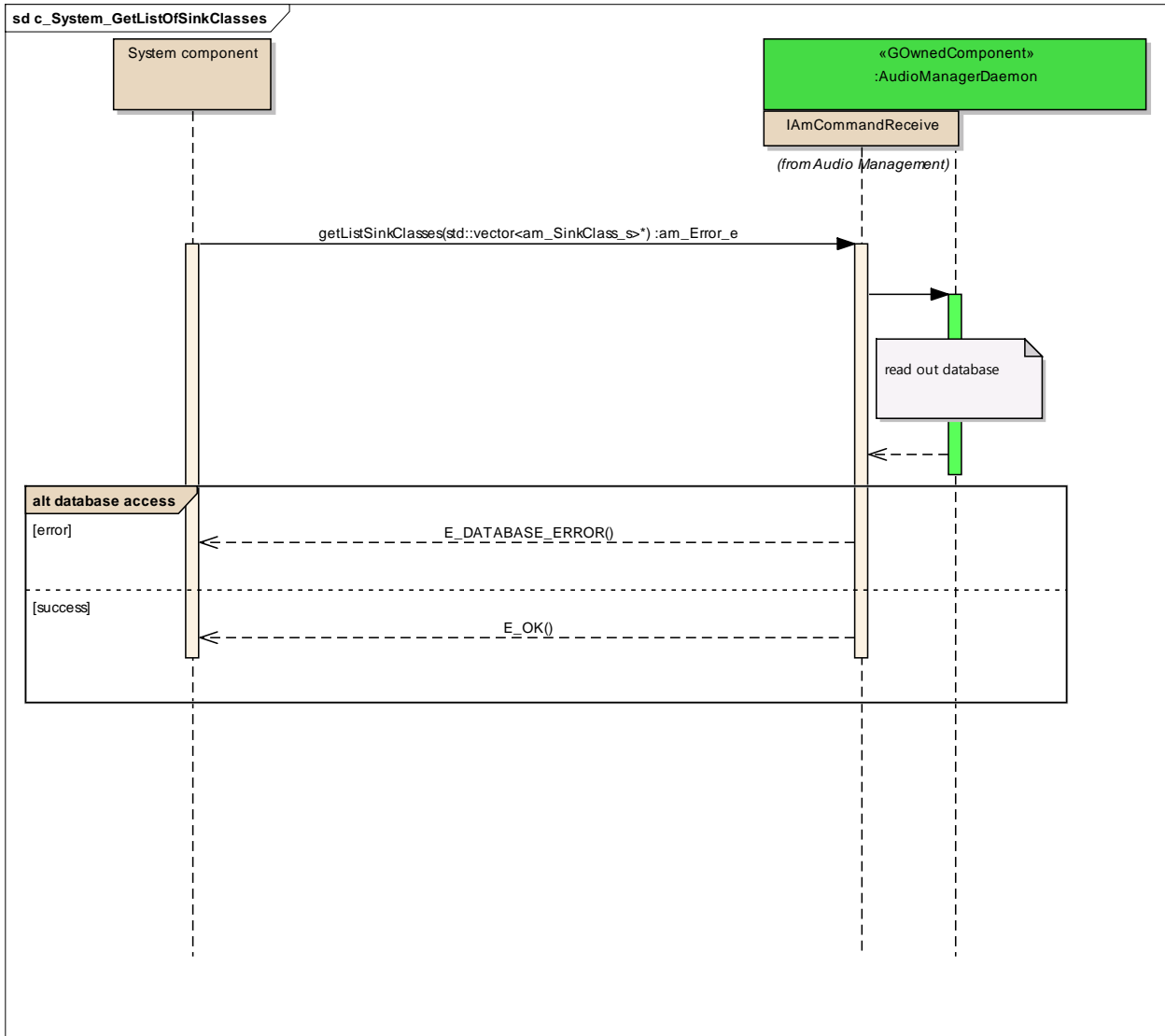


Figure: 17

database access

Type: **InteractionFragment**
 Status: Proposed. Version 1.0. Phase 1.0.
 Package: c_System_GetListOfSinkClasses *Keywords:*
 Detail: Created on 06.10.2011. Last modified on 06.10.2011.
 GUID: {C3360DB9-93A0-49b9-B399-FAB505E55525}

c_System_GetListOfSourceClasses

Type: **Package**
 Status: Reworked. Version 1.0. Phase 1.0.

Package: System Interaction
 Detail: Created on 06.10.2011. Last modified on 06.10.2011
 GUID: {3B086687-114D-4255-BC94-EAF667AA3E58}

c System GetListOfSourceClasses - (Interaction diagram)

Created By: christian on 06.10.2011
 Last Modified: 06.10.2011
 Version: 1.0. Locked: False
 GUID: {8F3E4597-6EAF-4aba-9010-A57FC10D56DE}

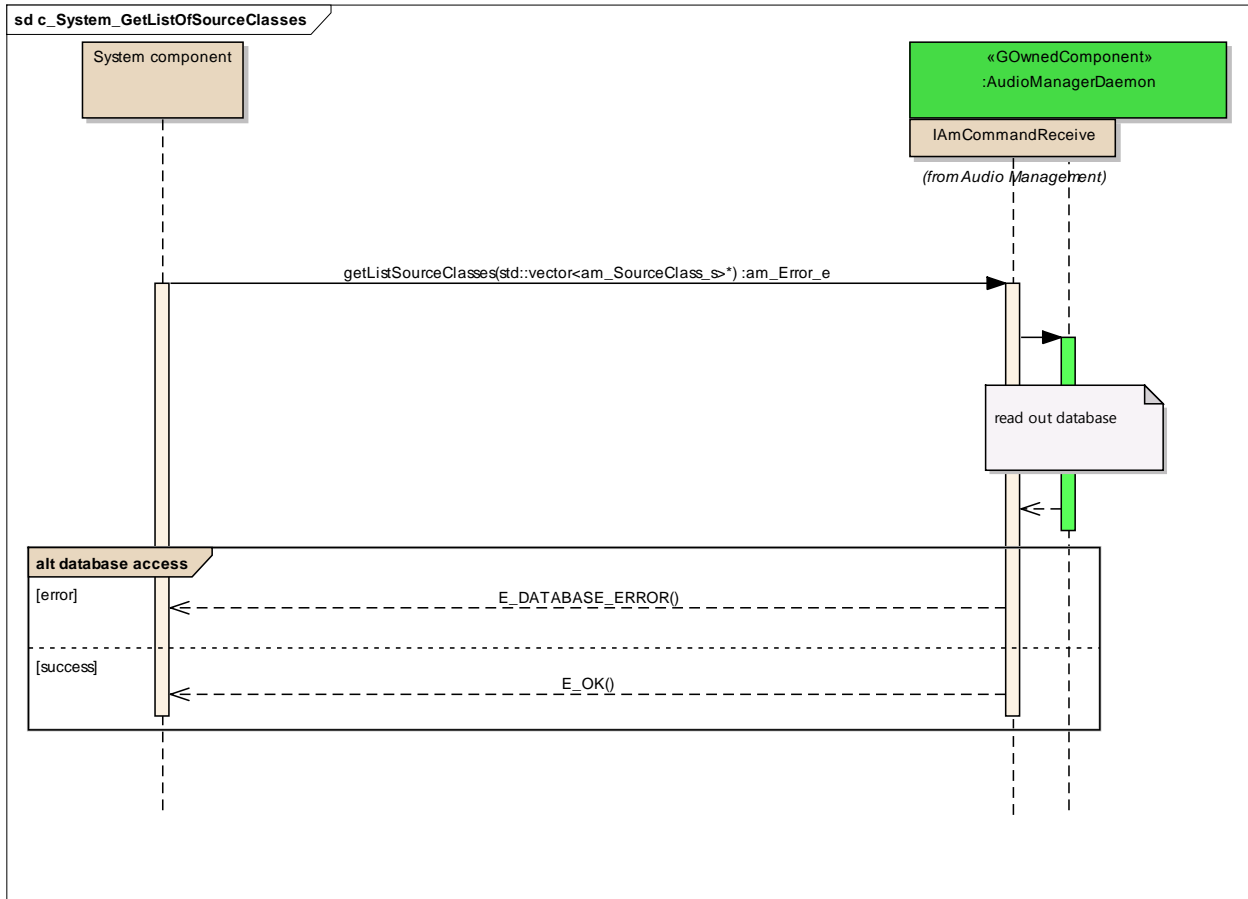


Figure: 18

database access

Type: **InteractionFragment**
 Status: Proposed. Version 1.0. Phase 1.0.
 Package: c_System_GetListOfSourceClasses **Keywords:**
 Detail: Created on 06.10.2011. Last modified on 06.10.2011.
 GUID: {74EDD8D7-7333-4012-B4CA-1FCB0D835DCB}

c_System_GetTimingInformation

Type: **Package**
 Status: Reworked. Version 1.0. Phase 1.0.
 Package: System Interaction
 Detail: Created on 23.09.2011. Last modified on 07.10.2011
 GUID: {8E5FB50C-EEAB-4532-89A5-2818CC367213}

c_System_GetTimingInformation - (Interaction diagram)

Created By: christian on 23.09.2011
 Last Modified: 07.10.2011
 Version: 1.0. Locked: False
 GUID: {550D9F7B-9239-4479-91F6-50BE40208C23}

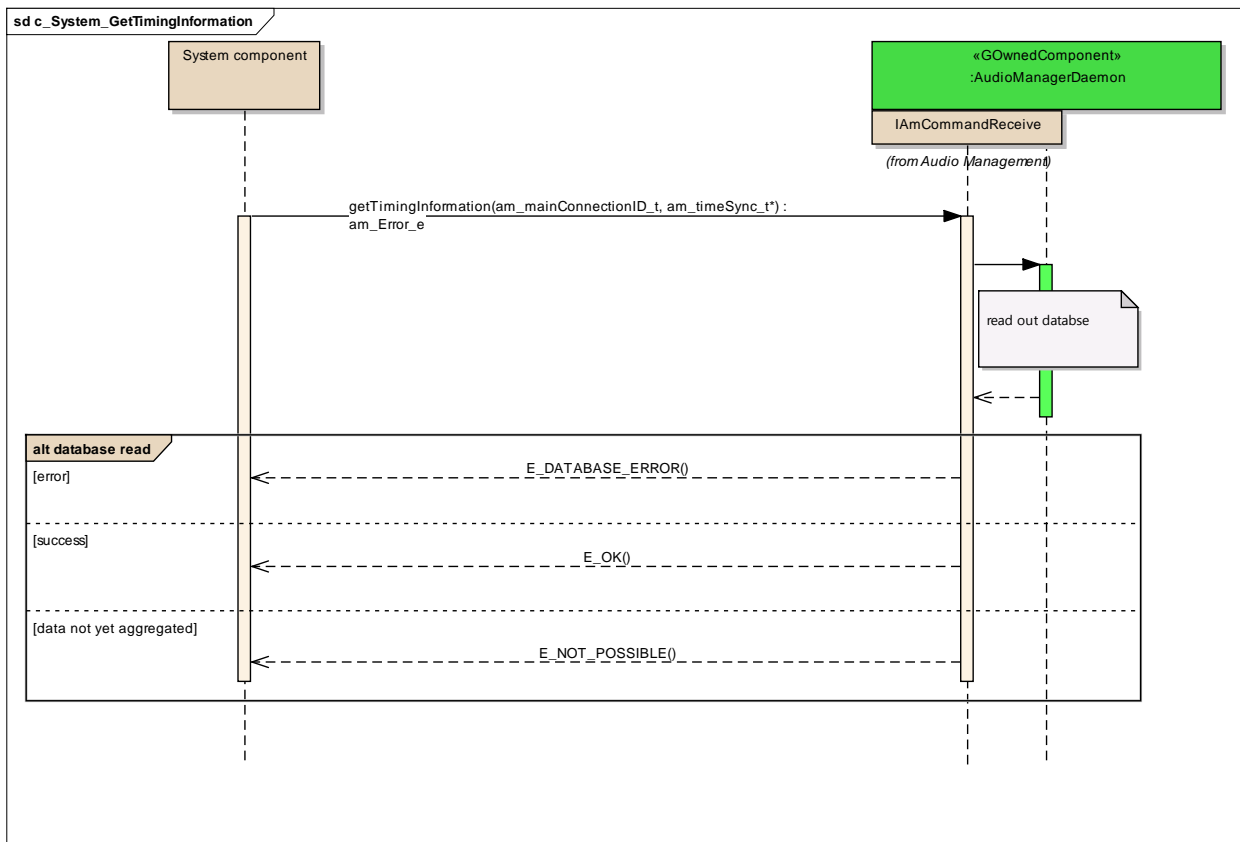


Figure: 19

database read

Type: **InteractionFragment**
 Status: Proposed. Version 1.0. Phase 1.0.
 Package: c_System_GetTimingInformation *Keywords:*
 Detail: Created on 07.10.2011. Last modified on 07.10.2011.
 GUID: {E363D1E5-D664-492a-8C3B-C05D20415475}

c_System_Interrupt

Type: **Package**
Status: Reworked. Version 1.0. Phase 1.0.
Package: System Interaction
Detail: Created on 17.08.2011. Last modified on 07.10.2011
GUID: {2F769324-42ED-4520-81DF-E6DDA0FAF7F6}

c_System_Interrupt - (Interaction diagram)

Created By: christian on 17.08.2011
Last Modified: 07.10.2011
Version: 1.0. *Locked:* False
GUID: {C4A09FFF-77B8-4e05-BAA5-37F138434C7B}

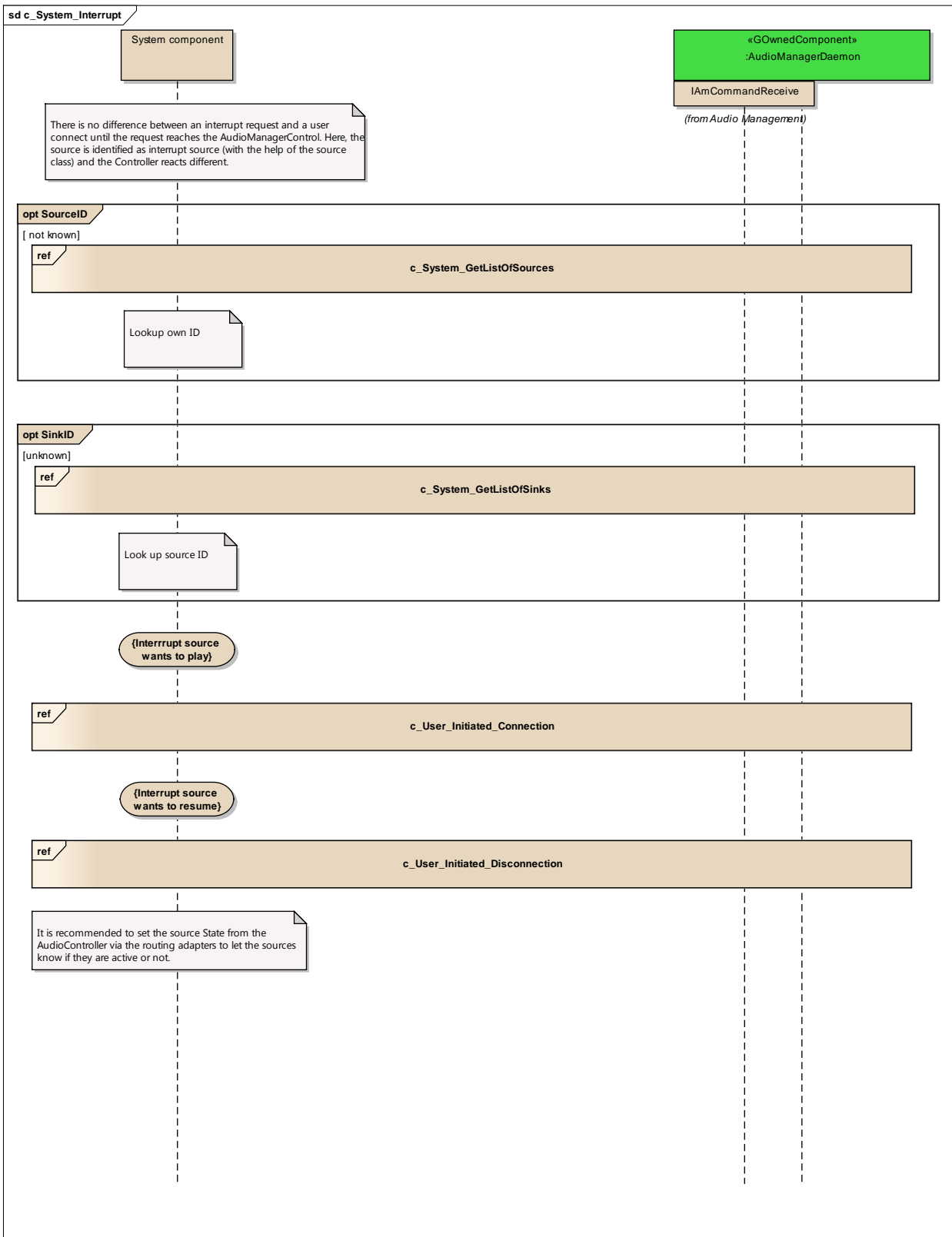


Figure: 20

SinkID

Type: **InteractionFragment**
Status: Proposed. Version 1.0. Phase 1.0.
Package: c_System_Interrupt *Keywords:*
Detail: Created on 07.10.2011. Last modified on 07.10.2011.
GUID: {B9025B82-7DA4-4595-B289-710BB32CF494}

SourceID

Type: **InteractionFragment**
Status: Proposed. Version 1.0. Phase 1.0.
Package: c_System_Interrupt *Keywords:*
Detail: Created on 07.10.2011. Last modified on 07.10.2011.
GUID: {994E0979-E050-4ba6-9BFA-AC3B56384767}

c_System_GetListOfSinks

Type: **InteractionOccurrence**
Status: Proposed. Version 1.0. Phase 1.0.
Package: c_System_Interrupt *Keywords:*
Detail: Created on 07.10.2011. Last modified on 07.10.2011.
GUID: {9737FA15-66DE-4131-8313-763057A77C4C}

c_System_GetListOfSources

Type: **InteractionOccurrence**
Status: Proposed. Version 1.0. Phase 1.0.
Package: c_System_Interrupt *Keywords:*
Detail: Created on 07.10.2011. Last modified on 07.10.2011.
GUID: {C27BB065-5A7C-4765-B2CA-F06273FF334C}

c_User_Initiated_Connection

Type: **InteractionOccurrence**
Status: Proposed. Version 1.0. Phase 1.0.
Package: c_System_Interrupt *Keywords:*
Detail: Created on 06.10.2011. Last modified on 06.10.2011.
GUID: {CE3B89EF-AF0D-49c9-81DF-1BBF8CC4C8CE}

c_User_Initiated_Disconnection

Type: **InteractionOccurrence**
 Status: Proposed. Version 1.0. Phase 1.0.
 Package: c_System_Interrupt *Keywords:*
 Detail: Created on 06.10.2011. Last modified on 06.10.2011.
 GUID: {94A7DF7B-0DDE-474a-8507-E953E587E743}

Event Handling

Type: **Package**
 Status: Reworked. Version 1.0. Phase 1.0.
 Package: Command Interface
 Detail: Created on 09.09.2011. Last modified on 07.10.2011
 GUID: {0F8E1067-0E51-4e69-8D93-A271880E34AC}

c_Event_MainSinkNotificationConfigurationChange

Type: **Package**
 Status: Proposed. Version 1.0. Phase 1.0.
 Package: Event Handling
 Detail: Created on 29.01.2013. Last modified on 29.01.2013
 GUID: {97B5FF42-9C7A-46d4-9C6C-96451E5C4E94}

c_Event_MainSinkNotificationConfigurationChange - (Interaction diagram)

Created By: q232968 on 29.01.2013
 Last Modified: 29.01.2013
 Version: 1.0. Locked: False
 GUID: {92589419-C6B7-47f9-A5F6-5EA71705D879}

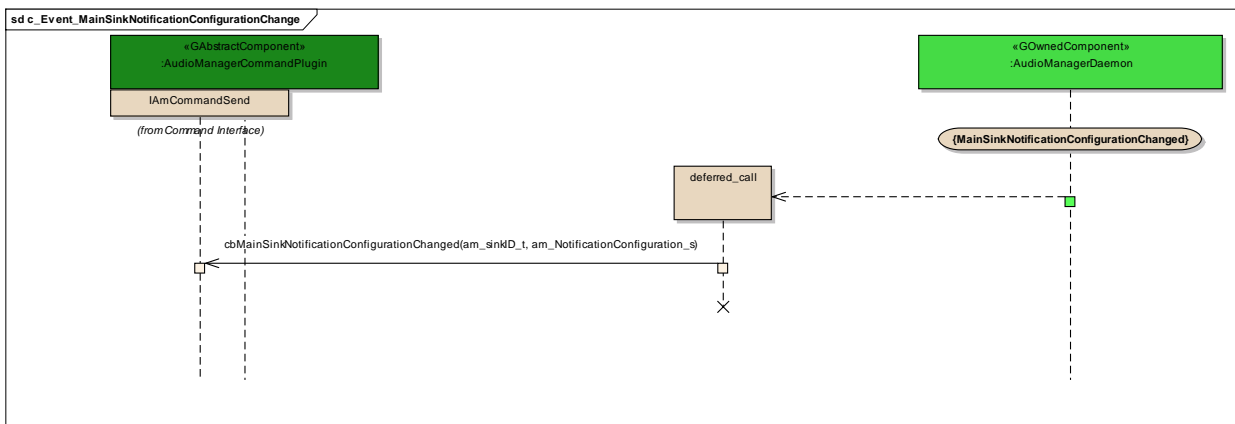


Figure: 21

deferred_call

Type: Sequence
Status: Proposed. Version 1.0. Phase 1.0.
Package: c_Event_MainSinkNotificationConfigurationChange *Keywords:*
Detail: Created on 29.01.2013. Last modified on 29.01.2013.
GUID: {9503F673-5853-4bf3-B440-9D6370E39CF3}

Connections

Connector	Source	Target	Notes
Sequence Source -> Destination	Public <anonymous>	Public deferred_call	
Sequence cbMainSinkNotificationC onfigurationChanged(am_ sinkID_t, am_NotificationConfigura tion_s) Source -> Destination	Public deferred_call	Public IAmCommandSend	

c_Event_MainSourceNotificationConfigurationChange

Type: Package
Status: Proposed. Version 1.0. Phase 1.0.
Package: Event Handling
Detail: Created on 29.01.2013. Last modified on 29.01.2013
GUID: {5B1FDA6C-613F-47f4-820D-C76F4447BC80}

c_Event_MainSourceNotificationConfigurationChange - (Interaction diagram)

Created By: q232968 on 29.01.2013
Last Modified: 29.01.2013
Version: 1.0. **Locked:** False
GUID: {07D20021-E64B-4338-A1AF-C339F0CA943A}



Figure: 22

deferred call

Type: **Sequence**
Status: Proposed. Version 1.0. Phase 1.0.
Package: c_Event_MainSourceNotificationConfigurationChange **Keywords:**
Detail: Created on 29.01.2013. Last modified on 29.01.2013.
GUID: {26E5052F-63D8-4841-9927-168496B06E5A}

Connections

Connector	Source	Target	Notes
Sequence Source -> Destination	Public <anonymous>	Public deferred call	
Sequence cbMainSourceNotificationConfigurationChanged(am_sourceID_t, am_NotificationConfiguration_s) Source -> Destination	Public deferred call	Public IAmCommandSend	

c_Event_MainSinkNotificationPayload

Type: **Package**
Status: Proposed. Version 1.0. Phase 1.0.
Package: Event Handling
Detail: Created on 29.01.2013. Last modified on 29.01.2013
GUID: {3FD7102B-697F-46ef-A7E1-4DF5E6869B4F}

c_Event_MainSinkNotificationPayload - (Interaction diagram)

Created By: q232968 on 29.01.2013
Last Modified: 29.01.2013
Version: 1.0. **Locked:** False
GUID: {A8C7F8D4-6C6B-4ec0-859D-480DE9D63812}

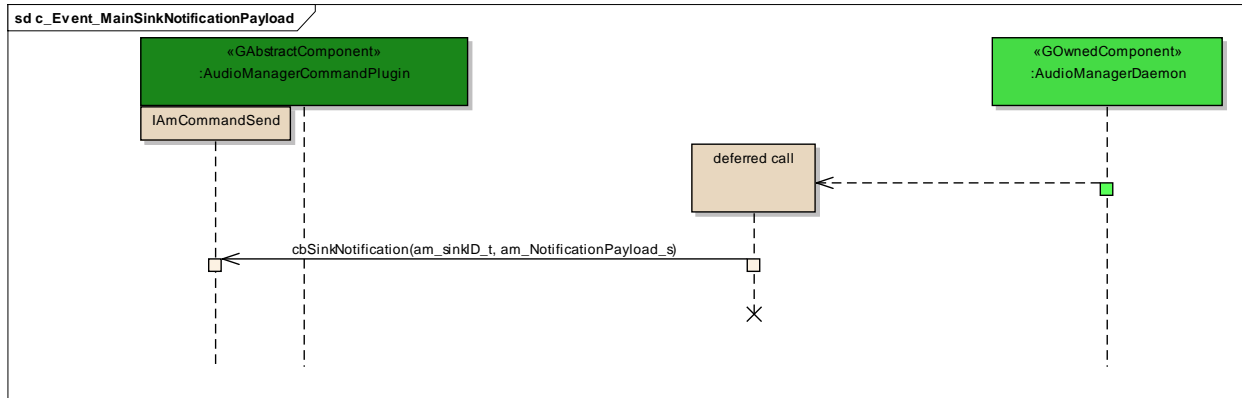


Figure: 23

deferred call

Type: Sequence
Status: Proposed. Version 1.0. Phase 1.0.
Package: c_Event_MainSinkNotificationPayload *Keywords:*
Detail: Created on 29.01.2013. Last modified on 29.01.2013.
GUID: {F6010CFD-4902-4393-82DC-593F9A056EFD}

Connections

Connector	Source	Target	Notes
Sequence Source -> Destination	Public <anonymous>	Public deferred call	
Sequence cbSinkNotification(am_sinkID_t, am_NotificationPayload_s) Source -> Destination	Public deferred call	Public IAmCommandSend	

c_EventMainSourceNotificationPayload

Type: Package
Status: Proposed. Version 1.0. Phase 1.0.
Package: Event Handling
Detail: Created on 29.01.2013. Last modified on 29.01.2013
GUID: {0CBD846E-FCCA-4be3-9406-CA873B5B1607}

c_EventMainSourceNotificationPayload - (Interaction diagram)

Created By: q232968 on 29.01.2013
Last Modified: 29.01.2013
Version: 1.0. *Locked:* False

GUID: {A49053A0-707B-4272-91A0-FC518DAB8722}

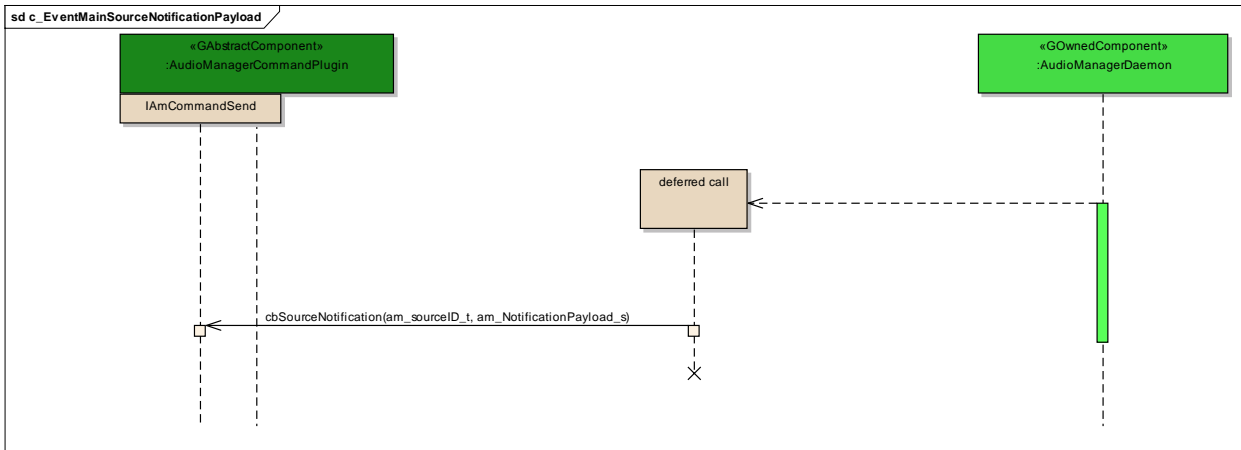


Figure: 24

deferred call

Type: Sequence
Status: Proposed. Version 1.0. Phase 1.0.
Package: c_EventMainSourceNotificationPayload **Keywords:**
Detail: Created on 29.01.2013. Last modified on 29.01.2013.
GUID: {70E8AA28-D813-4636-B80B-5B261145AEBE}

Connections

Connector	Source	Target	Notes
<u>Sequence</u> Source -> Destination	Public <anonymous>	Public deferred call	
<u>Sequence</u> cbSourceNotification(am_sourceID_t, am_NotificationPayload_s) Source -> Destination	Public deferred call	Public IAmCommandSend	

c_Event_ConnectionChange

Type: Package
Status: Reworked. Version 1.0. Phase 1.0.
Package: Event Handling
Detail: Created on 16.08.2011. Last modified on 06.10.2011
GUID: {A323DCDE-FAF8-473e-9C59-ACFD6297EECC}

c_Event_ConnectionChange - (Interaction diagram)

Created By: christian on 16.08.2011
 Last Modified: 23.02.2012
 Version: 1.0. Locked: False
 GUID: {1C55E56E-8B85-4677-A460-F1474E241C5C}

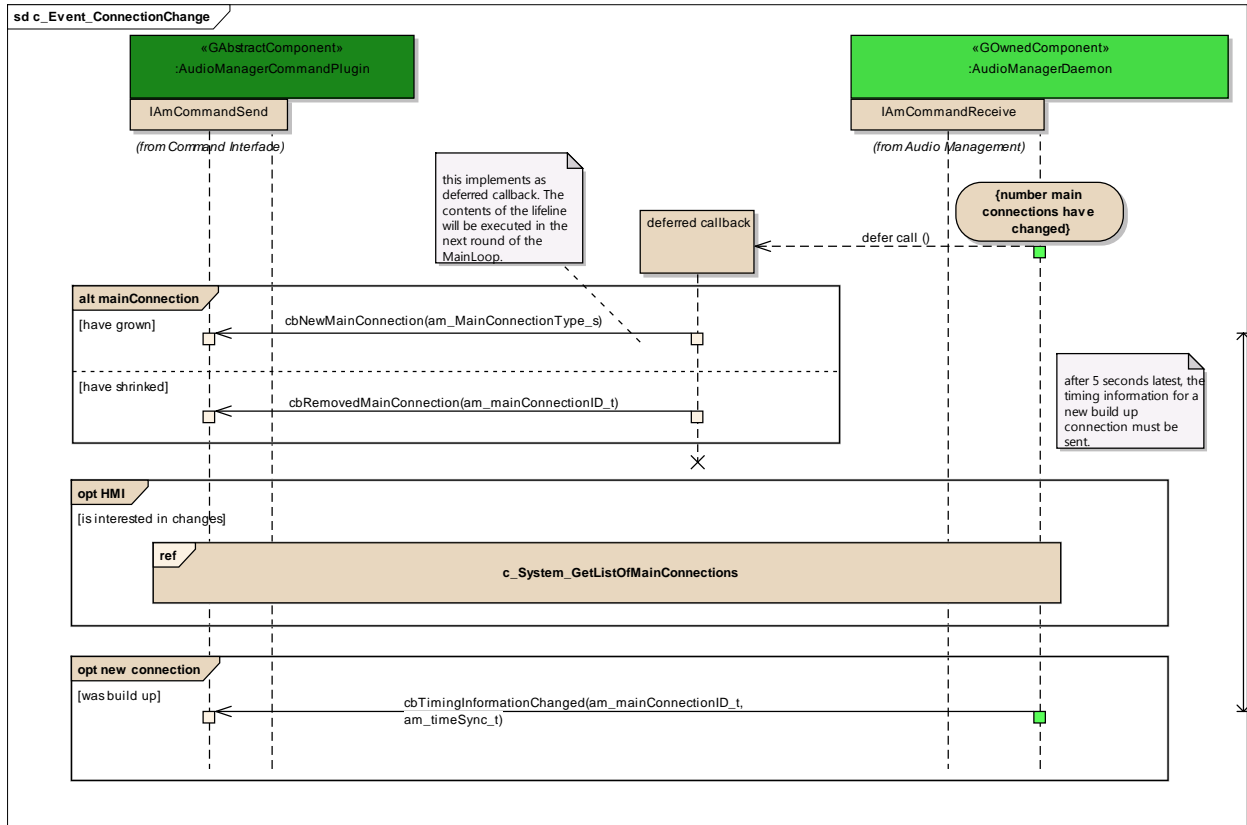


Figure: 25

HMI

Type: **InteractionFragment**
 Status: Proposed. Version 1.0. Phase 1.0.
 Package: c_Event_ConnectionChange **Keywords:**
 Detail: Created on 06.10.2011. Last modified on 06.10.2011.
 GUID: {688739E4-FBF9-4300-AB9F-9976BE54813F}

c_System_GetListOfMainConnections

Type: **InteractionOccurrence**
 Status: Proposed. Version 1.0. Phase 1.0.
 Package: c_Event_ConnectionChange **Keywords:**
 Detail: Created on 07.10.2011. Last modified on 07.10.2011.
 GUID: {B98F95A2-C7B4-4bc3-9C63-52F5899E7792}

deferred callback

Type: **Sequence**
Status: Proposed. Version 1.0. Phase 1.0.
Package: c_Event_ConnectionChange **Keywords:**
Detail: Created on 21.02.2012. Last modified on 21.02.2012.
GUID: {02077EB6-E01C-431b-9D8E-8F38E577C38C}

Connections

Connector	Source	Target	Notes
NoteLink	Public <anonymous>	Public deferred callback	
Sequence defer call Source -> Destination	Public <anonymous>	Public deferred callback	
Sequence cbNewMainConnection(a m_MainConnectionType_ s) Source -> Destination	Public deferred callback	Public IAmCommandSend	
Sequence cbRemovedMainConnecti on(am_MainConnectionT ype_s) Source -> Destination	Public deferred callback	Public IAmCommandSend	

mainConnection

Type: **InteractionFragment**
Status: Proposed. Version 1.0. Phase 1.0.
Package: c_Event_ConnectionChange **Keywords:**
Detail: Created on 22.02.2012. Last modified on 22.02.2012.
GUID: {2C27AB9C-FD2F-4447-9878-498710BE3774}

new connection

Type: **InteractionFragment**
Status: Proposed. Version 1.0. Phase 1.0.
Package: c_Event_ConnectionChange **Keywords:**
Detail: Created on 23.09.2011. Last modified on 23.09.2011.
GUID: {E8A612FB-059F-4438-9111-7307944A3B5D}

c_Event_ConnectionStateChange

Type: **Package**
 Status: Reworked. Version 1.0. Phase 1.0.
 Package: Event Handling
 Detail: Created on 17.08.2011. Last modified on 07.10.2011
 GUID: {8D53DA52-61C1-49bb-901B-26AE8CB269D7}

c_Event_ConnectionStateChange - (Interaction diagram)

Created By: christian on 17.08.2011
 Last Modified: 21.02.2012
 Version: 1.0. Locked: False
 GUID: {EA4A9B50-4B37-4752-A6C6-4418E8058985}

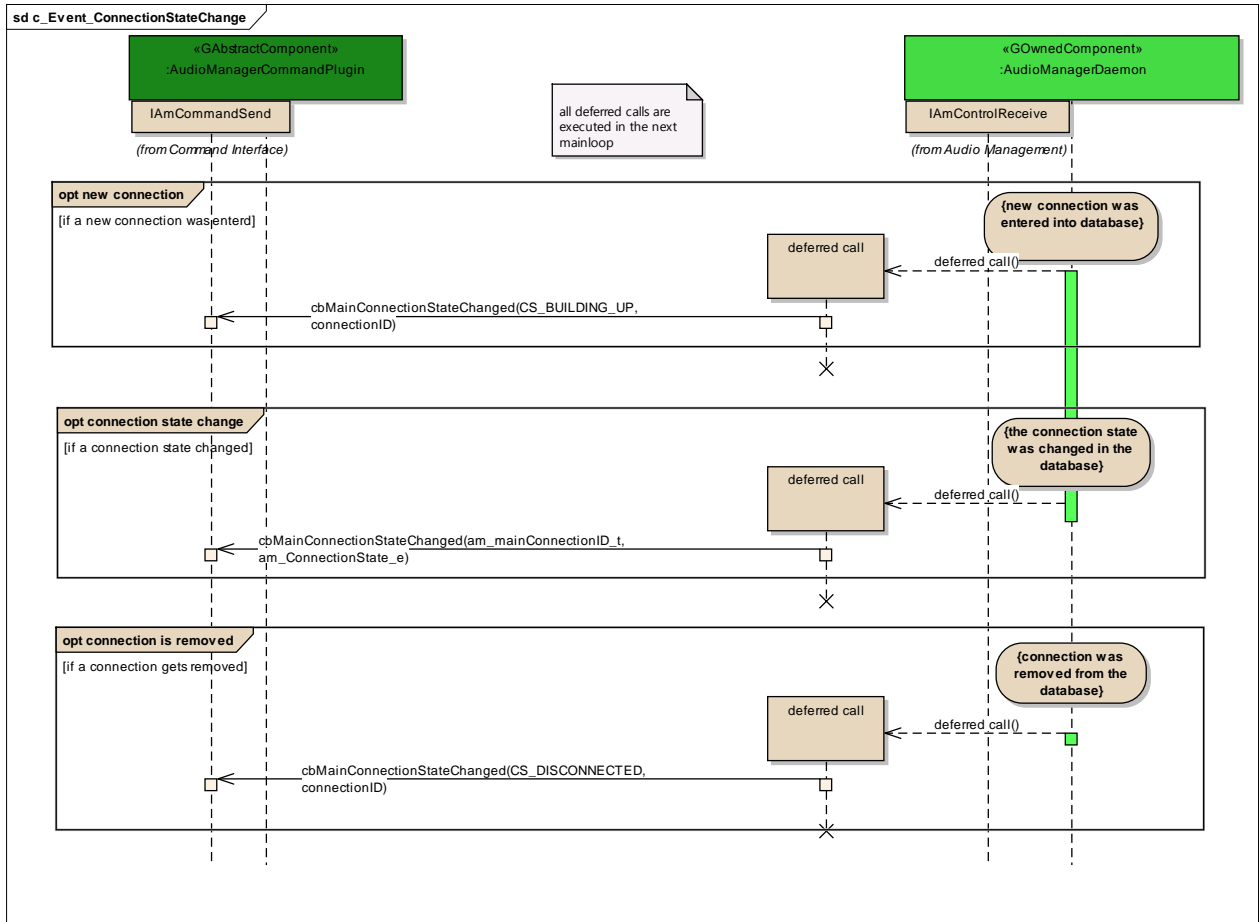


Figure: 26

connection is removed

Type: **InteractionFragment**

Status: Proposed. Version 1.0. Phase 1.0.
Package: c_Event_ConnectionStateChange *Keywords:*
Detail: Created on 17.08.2011. Last modified on 17.08.2011.
GUID: {33F28013-FF5A-4081-989D-4BE269FA17D1}

connection state change

Type: **InteractionFragment**
Status: Proposed. Version 1.0. Phase 1.0.
Package: c_Event_ConnectionStateChange *Keywords:*
Detail: Created on 17.08.2011. Last modified on 17.08.2011.
GUID: {06CCAF29-6B35-46d8-A530-8AD02D7BDF73}

deferred call

Type: **Sequence**
Status: Proposed. Version 1.0. Phase 1.0.
Package: c_Event_ConnectionStateChange *Keywords:*
Detail: Created on 21.02.2012. Last modified on 21.02.2012.
GUID: {F7BC1F39-1E02-44b3-889A-69ABF0241F6C}

Connections

Connector	Source	Target	Notes
Sequence deferred call Source -> Destination	Public <anonymous>	Public deferred call	
Sequence cbMainConnectionStateC hanged(am_mainConnecti onID_t, am_ConnectionState_e) Source -> Destination	Public deferred call	Public IAmCommandSend	

deferred call

Type: **Sequence**
Status: Proposed. Version 1.0. Phase 1.0.
Package: c_Event_ConnectionStateChange *Keywords:*
Detail: Created on 21.02.2012. Last modified on 21.02.2012.
GUID: {5F9A3D87-DDA4-4f3b-850D-B86A1156919F}

Connections

Connector	Source	Target	Notes
Sequence deferred call Source -> Destination	Public <anonymous>	Public deferred call	
Sequence cbMainConnectionStateC hanged(am_mainConnecti onID_t, am_ConnectionState_e) Source -> Destination	Public deferred call	Public IAmCommandSend	

deferred call

Type: **Sequence**
Status: Proposed. Version 1.0. Phase 1.0.
Package: c_Event_ConnectionStateChange **Keywords:**
Detail: Created on 21.02.2012. Last modified on 21.02.2012.
GUID: {257E3205-4FCD-41c2-A6A7-C56945B064B8}

Connections

Connector	Source	Target	Notes
Sequence deferred call Source -> Destination	Public <anonymous>	Public deferred call	
Sequence cbMainConnectionStateC hanged(am_mainConnecti onID_t, am_ConnectionState_e) Source -> Destination	Public deferred call	Public IAmCommandSend	

new connection

Type: **InteractionFragment**
Status: Proposed. Version 1.0. Phase 1.0.
Package: c_Event_ConnectionStateChange **Keywords:**
Detail: Created on 17.08.2011. Last modified on 17.08.2011.
GUID: {481BF809-7306-408b-B423-02FDC986CA4C}

c_Event_TimeDelayInformationChanged

Type: **Package**
Status: Reworked. Version 1.0. Phase 1.0.
Package: Event Handling
Detail: Created on 23.09.2011. Last modified on 07.10.2011
GUID: {47ACCF04-FE33-472f-A364-97BE923D5800}

c_Event_TimeDelayInformationChanged - (Interaction diagram)

Created By: christian on 23.09.2011
Last Modified: 22.02.2012
Version: 1.0. **Locked:** False
GUID: {D5989448-D141-4bc9-9733-8DE7045FF34C}

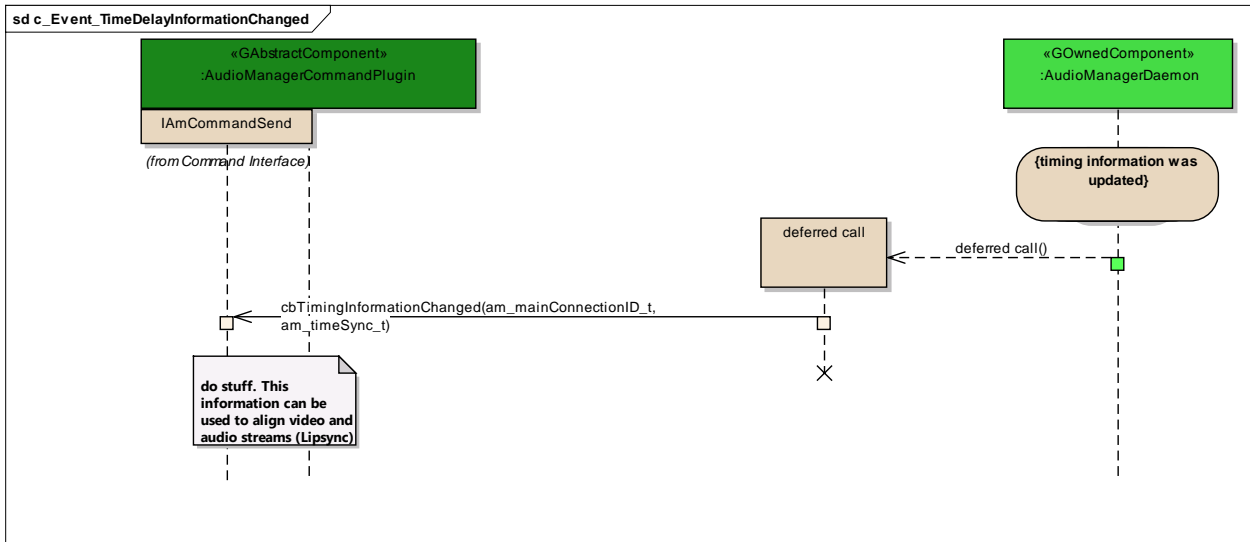


Figure: 27

deferred call

Type: **Sequence**
Status: Proposed. Version 1.0. Phase 1.0.
Package: c_Event_TimeDelayInformationChanged **Keywords:**
Detail: Created on 22.02.2012. Last modified on 22.02.2012.
GUID: {9189B235-DDEA-4aa2-B472-AE05C7DC4AFE}

Connections

Connector	Source	Target	Notes
Sequence deferred call Source -> Destination	Public <anonymous>	Public deferred call	
Sequence cbTimingInformationChanged(am_mainConnectionID_t, am_timeSync_t) Source -> Destination	Public deferred call	Public IAmCommandSend	

Connector	Source	Target	Notes

c_Event_MuteStateChange

Type: Package
Status: Reworked. Version 1.0. Phase 1.0.
Package: Event Handling
Detail: Created on 22.09.2011. Last modified on 07.10.2011
GUID: {139EB971-271E-4629-ACB1-4B4BF2D5E0BF}

c_Event_MuteStateChange - (Interaction diagram)

Created By: christian on 22.09.2011
Last Modified: 21.02.2012
Version: 1.0. **Locked:** False
GUID: {86D09A24-8B51-4f09-A0DA-0C84AA3D8BB2}

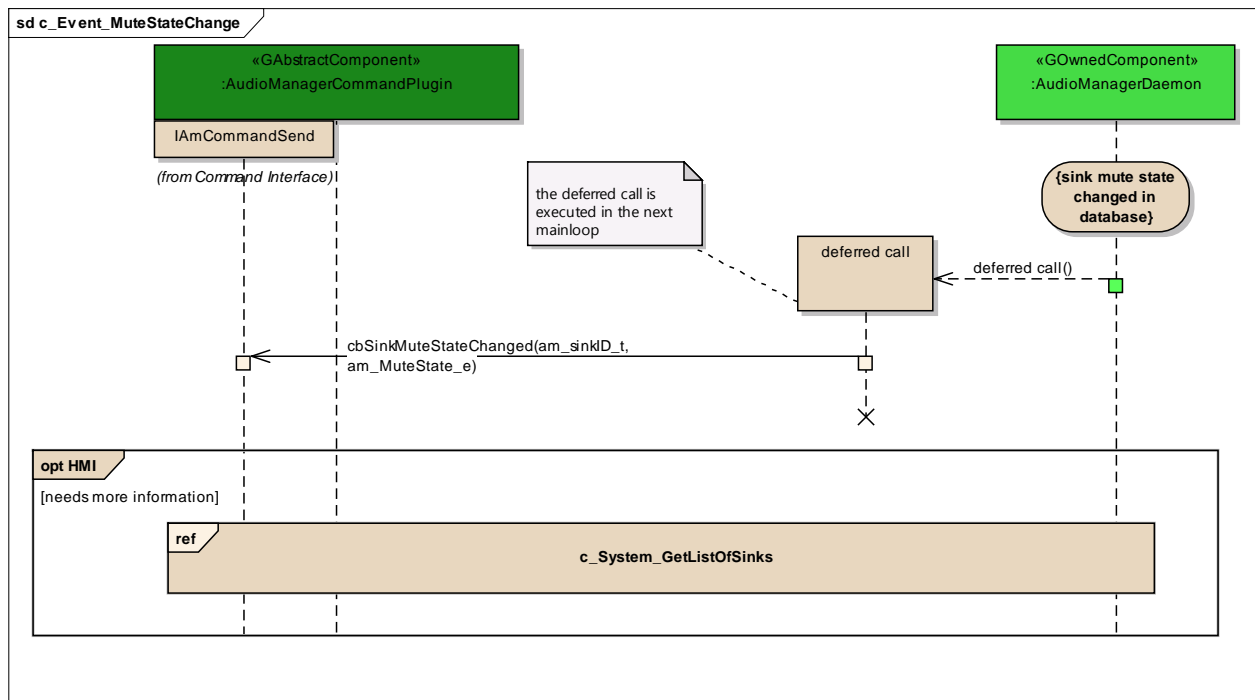


Figure: 28

HMI

Type: InteractionFragment
Status: Proposed. Version 1.0. Phase 1.0.
Package: c_Event_MuteStateChange **Keywords:**
Detail: Created on 07.10.2011. Last modified on 07.10.2011.
GUID: {77C291DA-1B77-49ea-AFAD-35CB36FB95DD}

c_System_GetListOfSinks

Type: **InteractionOccurrence**
Status: Proposed. Version 1.0. Phase 1.0.
Package: c_Event_MuteStateChange **Keywords:**
Detail: Created on 07.10.2011. Last modified on 07.10.2011.
GUID: {A35DA151-43DB-4c56-99F5-F71E6570D65B}

deferred call

Type: **Sequence**
Status: Proposed. Version 1.0. Phase 1.0.
Package: c_Event_MuteStateChange **Keywords:**
Detail: Created on 21.02.2012. Last modified on 21.02.2012.
GUID: {48DA2B2F-84F1-4f29-975F-4BD352DDA0DF}

Connections

Connector	Source	Target	Notes
NoteLink	Public <anonymous>	Public deferred call	
Sequence deferred call Source -> Destination	Public <anonymous>	Public deferred call	
Sequence cbSinkMuteStateChanged (am_sinkID_t, am_MuteState_e) Source -> Destination	Public deferred call	Public IAmCommandSend	

c_Event_SinkAvailabilityChange

Type: **Package**
Status: Reworked. Version 1.0. Phase 1.0.
Package: Event Handling
Detail: Created on 20.09.2011. Last modified on 07.10.2011
GUID: {F1B9E5C8-6D93-4d80-A9B7-1449C74A39DF}

c_Event_SinkAvailabilityChange - (Interaction diagram)

Created By: christian on 20.09.2011
Last Modified: 22.02.2012
Version: 1.0. **Locked:** False
GUID: {2473FB4A-7678-4c20-85D6-967DFB9E3E57}

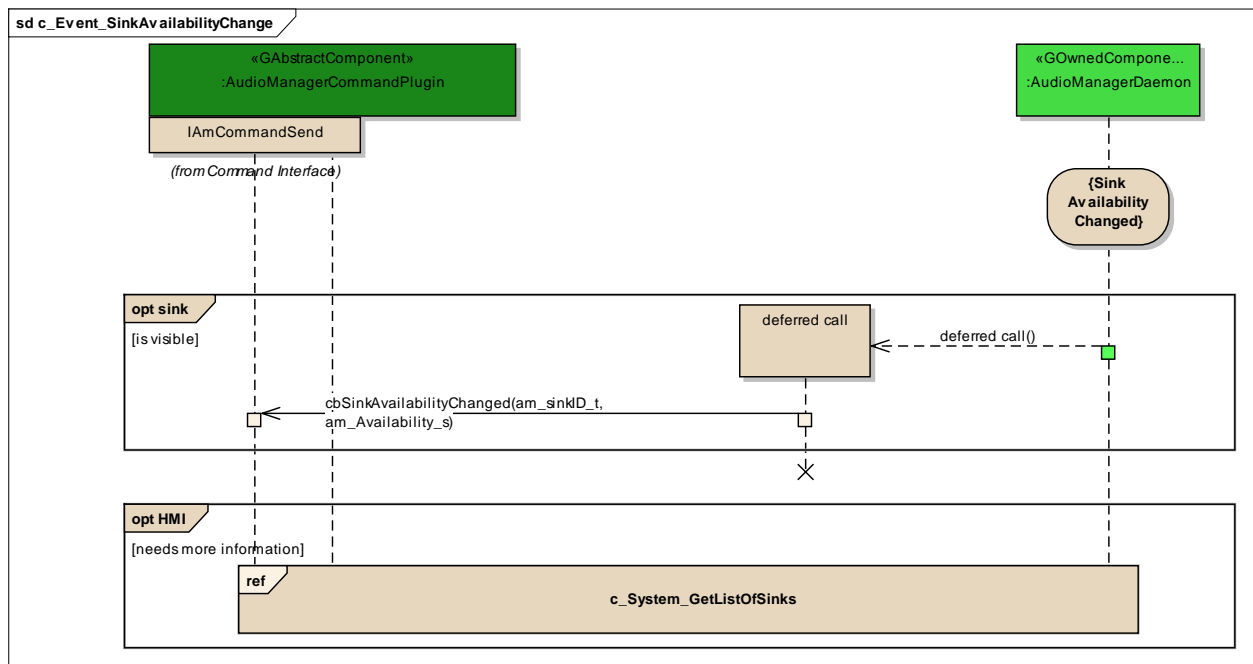


Figure: 29

HMI

Type: InteractionFragment
Status: Proposed. Version 1.0. Phase 1.0.
Package: c_Event_SinkAvailabilityChange **Keywords:**
Detail: Created on 07.10.2011. Last modified on 07.10.2011.
GUID: {425A037F-FABA-4b27-B69F-175992C917BA}

c_System_GetListOfSinks

Type: InteractionOccurrence
Status: Proposed. Version 1.0. Phase 1.0.
Package: c_Event_SinkAvailabilityChange **Keywords:**
Detail: Created on 07.10.2011. Last modified on 07.10.2011.
GUID: {81DFDFDA-0733-46c9-8967-D5D09B662898}

deferred call

Type: Sequence
Status: Proposed. Version 1.0. Phase 1.0.
Package: c_Event_SinkAvailabilityChange **Keywords:**
Detail: Created on 22.02.2012. Last modified on 22.02.2012.

GUID: {5763AC75-DE9D-467c-A0B0-927BD1B1E1F7}

Connections

Connector	Source	Target	Notes
Sequence deferred call Source -> Destination	Public <anonymous>	Public deferred call	
Sequence cbSinkAvailabilityChange d(am_sinkID_t, am_Availability_s) Source -> Destination	Public deferred call	Public IAmCommandSend	

sink

Type: **InteractionFragment**
Status: Proposed. Version 1.0. Phase 1.0.
Package: c_Event_SinkAvailabilityChange **Keywords:**
Detail: Created on 20.09.2011. Last modified on 20.09.2011.
GUID: {E3A72B98-AB24-4f71-BD2C-FBB752236758}

c_Event_SourceAvailabilityChange

Type: **Package**
Status: Reworked. Version 1.0. Phase 1.0.
Package: Event Handling
Detail: Created on 20.09.2011. Last modified on 07.10.2011
GUID: {E263D169-B510-4988-BBC2-C5BF841DB593}

c_Event_SourceAvailabilityChange - (Interaction diagram)

Created By: christian on 20.09.2011
Last Modified: 22.02.2012
Version: 1.0. **Locked:** False
GUID: {0976A2B5-B3D0-4840-B896-E5716CE61A43}

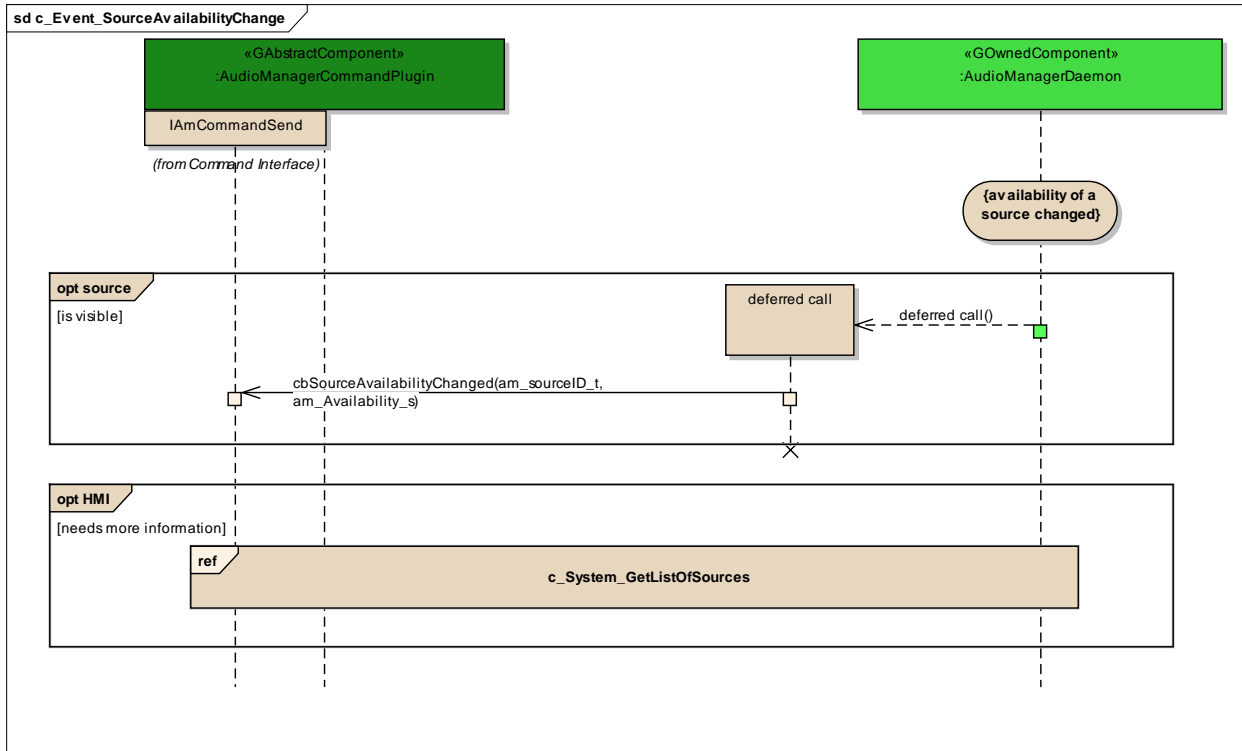


Figure: 30

HMI

Type: InteractionFragment
Status: Proposed. Version 1.0. Phase 1.0.
Package: c_Event_SourceAvailabilityChange **Keywords:**
Detail: Created on 07.10.2011. Last modified on 07.10.2011.
GUID: {6DAE6CB8-023A-4689-8048-9047BEA430D6}

c_System_GetListOfSources

Type: InteractionOccurrence
Status: Proposed. Version 1.0. Phase 1.0.
Package: c_Event_SourceAvailabilityChange **Keywords:**
Detail: Created on 07.10.2011. Last modified on 07.10.2011.
GUID: {BE3C4525-0CAB-4005-A675-7A06F036DB3D}

deferred call

Type: Sequence
Status: Proposed. Version 1.0. Phase 1.0.
Package: c_Event_SourceAvailabilityChange **Keywords:**

Detail: Created on 22.02.2012. Last modified on 22.02.2012.
GUID: {E9DBD510-AF52-4586-A686-22CCB62C1599}

Constraints

- de: (Invariant, Status is Approved)

Connections

Connector	Source	Target	Notes
Sequence deferred call Source -> Destination	Public <anonymous>	Public deferred call	
Sequence cbSourceAvailabilityChanged(am_sourceID_t, am_Availability_s) Source -> Destination	Public deferred call	Public IAmCommandSend	

source

Type: **InteractionFragment**
Status: Proposed. Version 1.0. Phase 1.0.
Package: c_Event_SourceAvailabilityChange *Keywords:*
Detail: Created on 20.09.2011. Last modified on 20.09.2011.
GUID: {58EEF976-0A9C-4664-A59E-16E8BFFB90A8}

c_Event_SinkSoundPropertyChange

Type: **Package**
Status: Reworked. Version 1.0. Phase 1.0.
Package: Event Handling
Detail: Created on 12.09.2011. Last modified on 07.10.2011
GUID: {6875DCC5-E08E-4a75-9B2E-8418E080683F}

c_Event_SinkSoundPropertyChange - (Interaction diagram)

Created By: christian on 12.09.2011
Last Modified: 21.02.2012
Version: 1.0. *Locked:* False
GUID: {E0DA5C47-5DAD-477f-9E72-339D86936A1F}

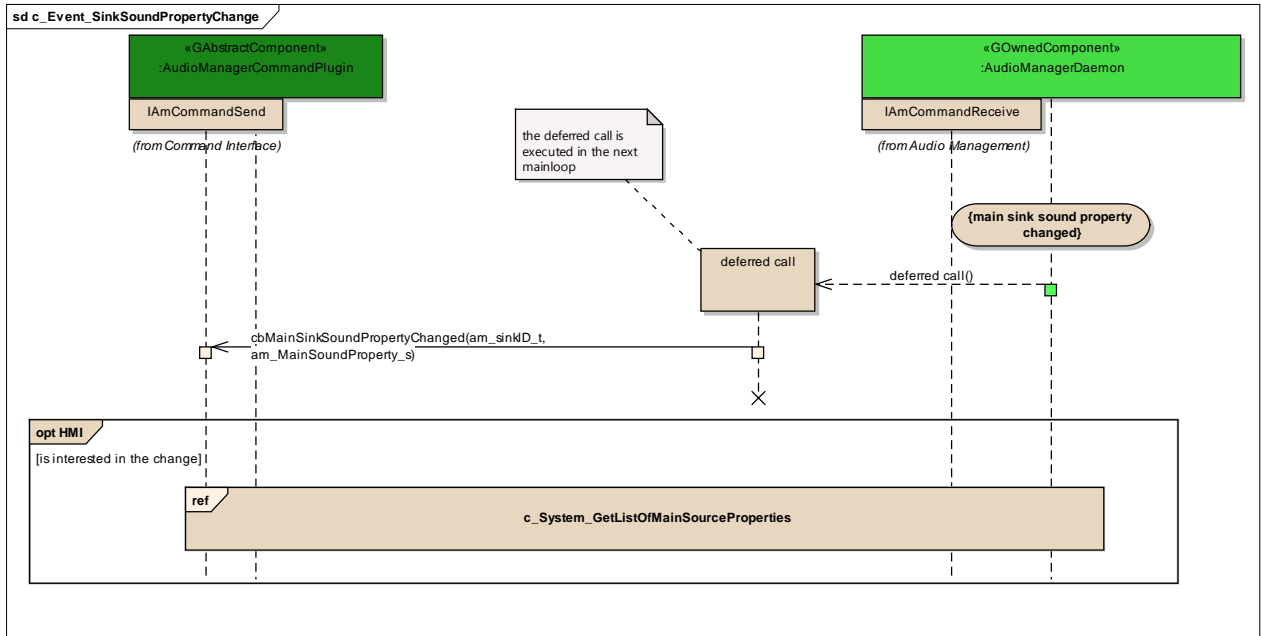


Figure: 31

HMI

Type: InteractionFragment
Status: Proposed. Version 1.0. Phase 1.0.
Package: c_Event_SinkSoundPropertyChange **Keywords:**
Detail: Created on 06.10.2011. Last modified on 06.10.2011.
GUID: {BA70D780-B829-4e23-9C18-4B09DF929833}

c_System_GetListOfMainSourceProperties

Type: InteractionOccurrence
Status: Proposed. Version 1.0. Phase 1.0.
Package: c_Event_SinkSoundPropertyChange **Keywords:**
Detail: Created on 07.10.2011. Last modified on 07.10.2011.
GUID: {6A44B90E-9168-42af-848A-C1E7DACB2DAF}

deferred call

Type: Sequence
Status: Proposed. Version 1.0. Phase 1.0.
Package: c_Event_SinkSoundPropertyChange **Keywords:**
Detail: Created on 21.02.2012. Last modified on 21.02.2012.
GUID: {4AF7DB68-9CD8-4e73-B5FD-D4239D5C6C6D}

Connections

Connector	Source	Target	Notes
<u>NoteLink</u>	Public <anonymous>	Public deferred call	
<u>Sequence</u> deferred call Source -> Destination	Public <anonymous>	Public deferred call	
<u>Sequence</u> cbMainSinkSoundProperty yChanged(am_sinkID_t, am_MainSoundProperty_ s) Source -> Destination	Public deferred call	Public IAmCommandSend	

c_Event_SourceSoundPropertyChange

Type: **Package**
 Status: Reworked. Version 1.0. Phase 1.0.
 Package: Event Handling
 Detail: Created on 12.09.2011. Last modified on 07.10.2011
 GUID: {93D0254C-6422-4f31-AE8C-C3EE1B261169}

c_Event_SourceSoundPropertyChange - (Interaction diagram)

Created By: christian on 12.09.2011
 Last Modified: 21.02.2012
 Version: 1.0. Locked: False
 GUID: {A39BADE6-70B8-4807-A416-B853E21E66C1}

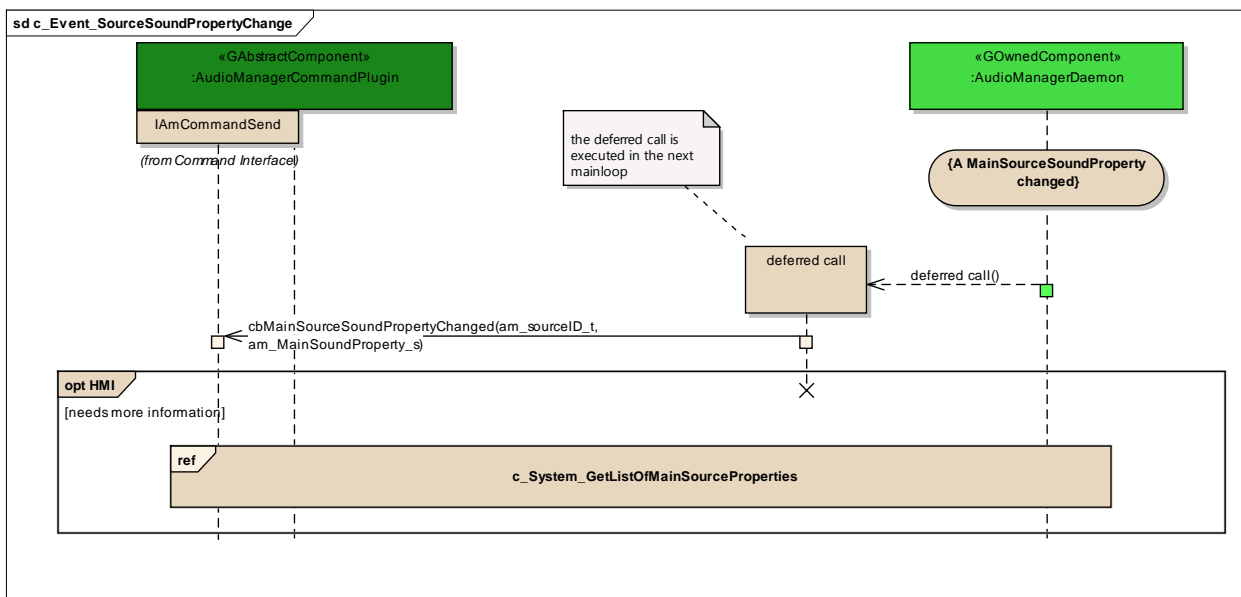


Figure: 32

HMI

Type: InteractionFragment
Status: Proposed. Version 1.0. Phase 1.0.
Package: c_Event_SourceSoundPropertyChange **Keywords:**
Detail: Created on 06.10.2011. Last modified on 06.10.2011.
GUID: {7DA671FD-57F5-493e-BA70-D81604169A15}

c_System_GetListOfMainSourceProperties

Type: InteractionOccurrence
Status: Proposed. Version 1.0. Phase 1.0.
Package: c_Event_SourceSoundPropertyChange **Keywords:**
Detail: Created on 07.10.2011. Last modified on 07.10.2011.
GUID: {8655602F-C2B0-4eb3-9C29-02FC15FBAC6F}

deferred call

Type: Sequence
Status: Proposed. Version 1.0. Phase 1.0.
Package: c_Event_SourceSoundPropertyChange **Keywords:**
Detail: Created on 21.02.2012. Last modified on 21.02.2012.
GUID: {E462B249-E5F6-4c71-8083-F4B83E71C33D}

Connections

Connector	Source	Target	Notes
<u>NoteLink</u>	Public <anonymous>	Public deferred call	
<u>Sequence</u> deferred call Source -> Destination	Public <anonymous>	Public deferred call	
<u>Sequence</u> cbMainSourceSoundProp ertyChanged(am_sourceI D_t, am_MainSoundProperty_ s) Source -> Destination	Public deferred call	Public IAmCommandSend	

c_Event_SystemPropertyChange

Type: Package
Status: Reworked. Version 1.0. Phase 1.0.
Package: Event Handling
Detail: Created on 06.10.2011. Last modified on 06.10.2011
GUID: {24801A84-7E48-4385-A182-9F65F55BD767}

c_Event_SystemPropertyChange - (Interaction diagram)

Created By: christian on 06.10.2011
Last Modified: 21.02.2012
Version: 1.0. **Locked:** False
GUID: {AFF63199-B4CA-4c1e-87B4-1E93BF64BC62}

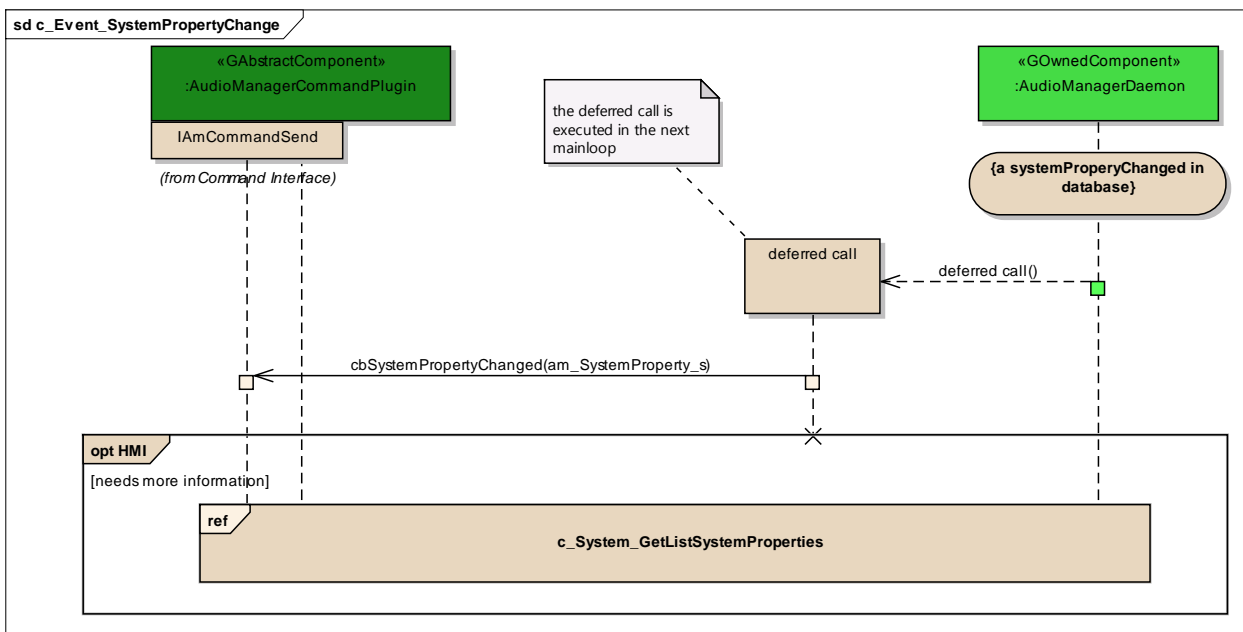


Figure: 33

HMI

Type: InteractionFragment
Status: Proposed. Version 1.0. Phase 1.0.
Package: c_Event_SystemPropertyChange **Keywords:**
Detail: Created on 06.10.2011. Last modified on 06.10.2011.
GUID: {50644631-9111-4abf-8D9C-6D27429C986B}

c_System_GetListSystemProperties

Type: InteractionOccurrence
Status: Proposed. Version 1.0. Phase 1.0.

Package: c_Event_SystemPropertyChange *Keywords:*
Detail: Created on 06.10.2011. Last modified on 06.10.2011.
GUID: {FA5E9F5B-3D09-4250-8D01-65F4E7037503}

deferred call

Type: **Sequence**
Status: Proposed. Version 1.0. Phase 1.0.
Package: c_Event_SystemPropertyChange *Keywords:*
Detail: Created on 21.02.2012. Last modified on 21.02.2012.
GUID: {1B4D7BF2-88FF-47ab-AA50-4C7C70EDCE91}

Connections

Connector	Source	Target	Notes
NoteLink	Public <anonymous>	Public deferred call	
Sequence deferred call Source -> Destination	Public <anonymous>	Public deferred call	
Sequence cbSystemPropertyChange d(am_SystemProperty_s) Source -> Destination	Public deferred call	Public IAmCommandSend	

c_Event_VolumeChange

Type: **Package**
Status: Reworked. Version 1.0. Phase 1.0.
Package: Event Handling
Detail: Created on 17.08.2011. Last modified on 07.10.2011
GUID: {6A58153E-CC10-402e-9F38-93F316FAC78A}

c_Event_VolumeChange - (Interaction diagram)

Created By: christian on 19.08.2011
Last Modified: 21.02.2012
Version: 1.0. *Locked:* False
GUID: {B88A30C1-672D-4b99-9DD3-50B88FBAFED2}

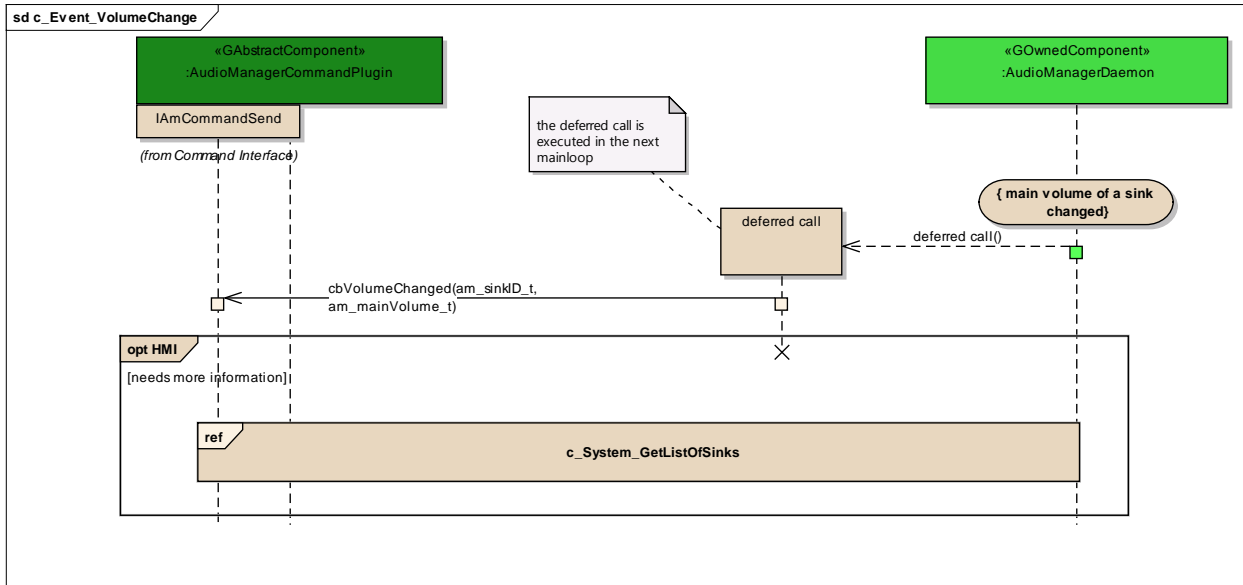


Figure: 34

HMI

Type: InteractionFragment
Status: Proposed. Version 1.0. Phase 1.0.
Package: c_Event_VolumeChange *Keywords:*
Detail: Created on 07.10.2011. Last modified on 07.10.2011.
GUID: {519FC76D-7642-49d9-9A95-CC5A8B8CABFE}

c_System_GetListOfSinks

Type: InteractionOccurrence
Status: Proposed. Version 1.0. Phase 1.0.
Package: c_Event_VolumeChange *Keywords:*
Detail: Created on 07.10.2011. Last modified on 07.10.2011.
GUID: {00E73E66-B068-4656-9D6E-74CE033966D6}

deferred call

Type: Sequence
Status: Proposed. Version 1.0. Phase 1.0.
Package: c_Event_VolumeChange *Keywords:*
Detail: Created on 21.02.2012. Last modified on 21.02.2012.
GUID: {64DC951A-FF5A-4860-A032-2CCFD4866440}

Connections

Connector	Source	Target	Notes
NoteLink	Public <anonymous>	Public deferred call	
Sequence deferred call Source -> Destination	Public <anonymous>	Public deferred call	
Sequence cbVolumeChanged(am_si nkID_t, am_mainVolume_t) Source -> Destination	Public deferred call	Public IAmCommandSend	

volume change

Type: **InteractionFragment**
Status: Proposed. Version 1.0. Phase 1.0.
Package: c_Event_VolumeChange **Keywords:**
Detail: Created on 19.08.2011. Last modified on 19.08.2011.
GUID: {264C8D4E-693B-4bee-B740-11D8AC456CD0}

c_Event_NumberOfSinksChange

Type: **Package**
Status: Reworked. Version 1.0. Phase 1.0.
Package: Event Handling
Detail: Created on 16.08.2011. Last modified on 07.10.2011
GUID: {26B40A43-E4D8-4a9d-BC14-07653FB43D3F}

c_Event_NumberOfSinksChange - (Interaction diagram)

Created By: christian on 16.08.2011
Last Modified: 22.02.2012
Version: 1.0. **Locked:** False
GUID: {3EBC70D6-D8FA-46da-833A-06C90F099E6D}

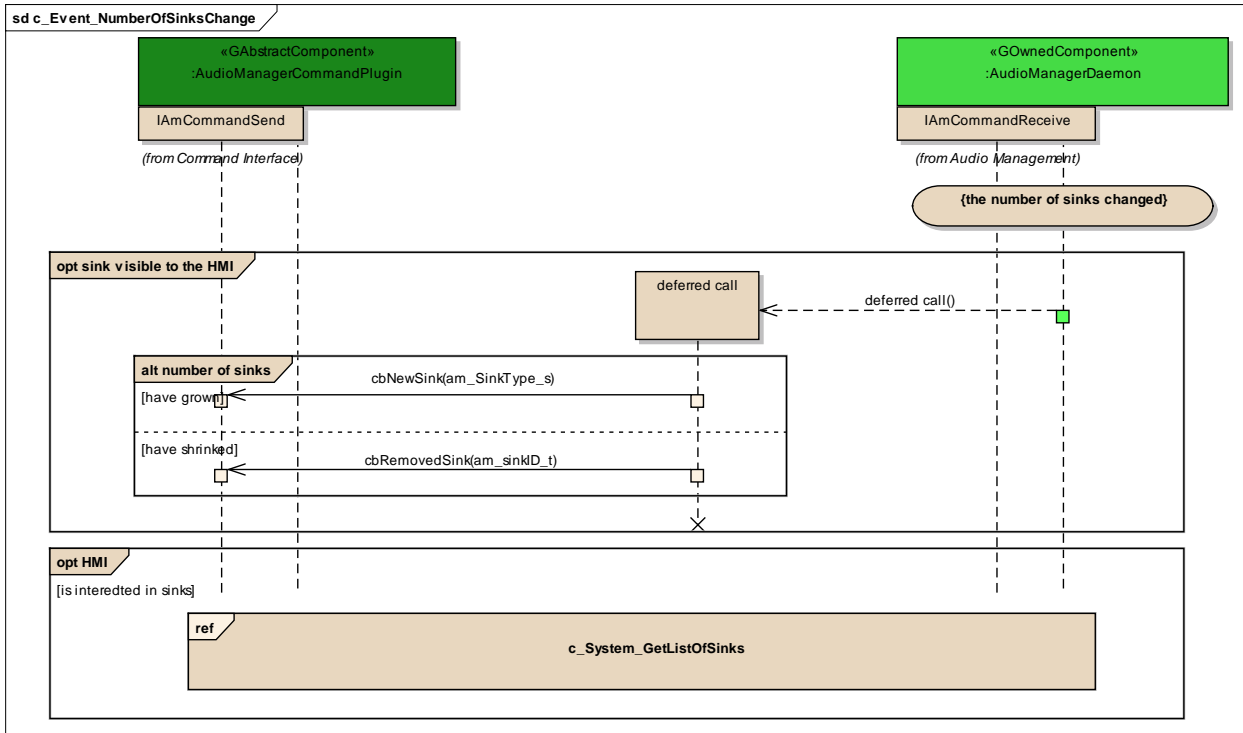


Figure: 35

HMI

Type: **InteractionFragment**
 Status: Proposed. Version 1.0. Phase 1.0.
 Package: c_Event_NumberOfSinksChange **Keywords:**
 Detail: Created on 06.10.2011. Last modified on 06.10.2011.
 GUID: {5AA0608D-2567-4281-917D-81309EB661E6}

c_System_GetListOfSinks

Type: **InteractionOccurrence**
 Status: Proposed. Version 1.0. Phase 1.0.
 Package: c_Event_NumberOfSinksChange **Keywords:**
 Detail: Created on 07.10.2011. Last modified on 07.10.2011.
 GUID: {8B0215B3-E316-4bbb-9739-4B945084D028}

deferred call

Type: **Sequence**
 Status: Proposed. Version 1.0. Phase 1.0.
 Package: c_Event_NumberOfSinksChange **Keywords:**

Detail: Created on 22.02.2012. Last modified on 22.02.2012.
GUID: {CF53AF22-ABAD-46f4-A239-F4597DBA2AC4}

Connections

Connector	Source	Target	Notes
Sequence deferred call Source -> Destination	Public <anonymous>	Public deferred call	
Sequence cbNewSink(am_SinkType_s) Source -> Destination	Public deferred call	Public IAmCommandSend	
Sequence cbRemovedSink(am_SinkType_s) Source -> Destination	Public deferred call	Public IAmCommandSend	

number of sinks

Type: **InteractionFragment**
Status: Proposed. Version 1.0. Phase 1.0.
Package: c_Event_NumberOfSinksChange *Keywords:*
Detail: Created on 22.02.2012. Last modified on 22.02.2012.
GUID: {C5E68604-B9EE-4f15-82F9-7026FB1C9ECB}

sink visible to the HMI

Type: **InteractionFragment**
Status: Proposed. Version 1.0. Phase 1.0.
Package: c_Event_NumberOfSinksChange *Keywords:*
Detail: Created on 11.10.2011. Last modified on 11.10.2011.
GUID: {B4BB5B93-6872-4ea2-B61C-30A560F778B7}

c_Event_NumberOfSourcesChange

Type: **Package**
Status: Reworked. Version 1.0. Phase 1.0.
Package: Event Handling
Detail: Created on 16.08.2011. Last modified on 07.10.2011
GUID: {AEEF5059-3571-4b40-A185-5068E7E8515B}

c_Event_NumberOfSourcesChange - (Interaction diagram)

Created By: christian on 16.08.2011
 Last Modified: 22.02.2012
 Version: 1.0. Locked: False
 GUID: {B0E80C05-0C0F-4033-AC21-1F218FE5E8C7}

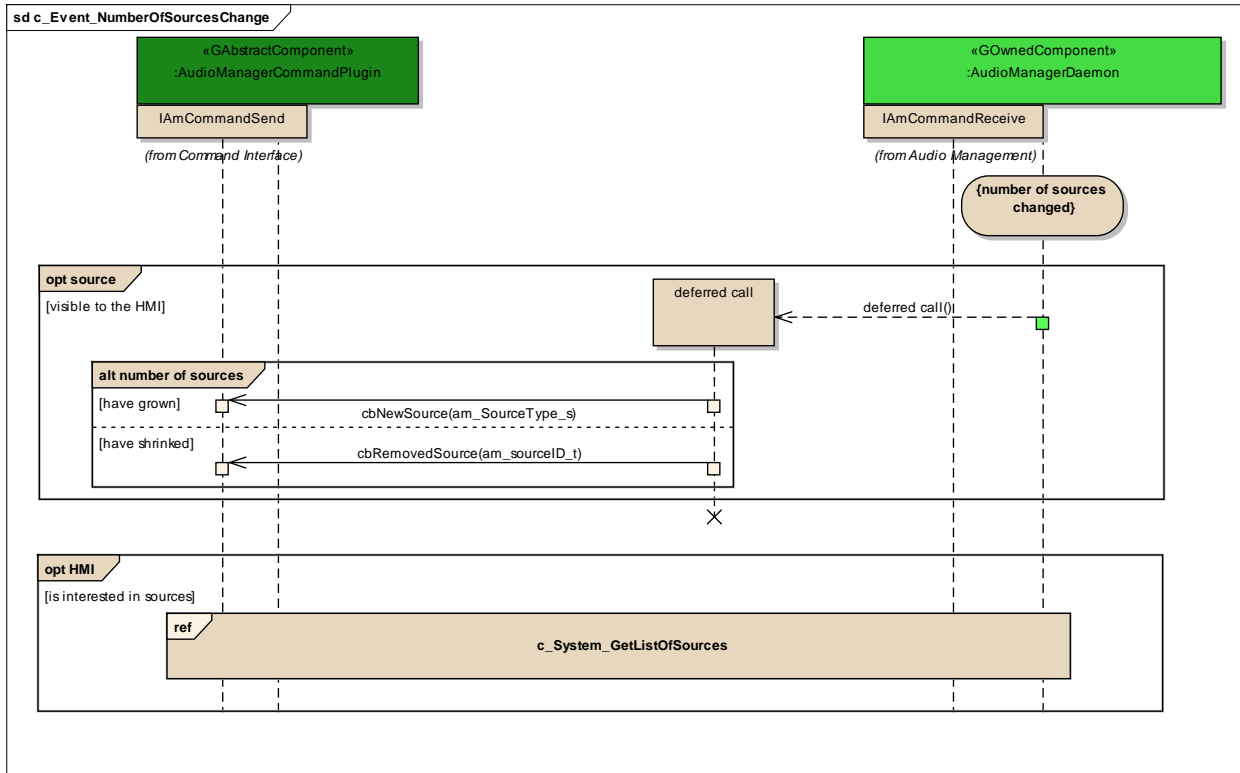


Figure: 36

HMI

Type: **InteractionFragment**
 Status: Proposed. Version 1.0. Phase 1.0.
 Package: c_Event_NumberOfSourcesChange **Keywords:**
 Detail: Created on 06.10.2011. Last modified on 06.10.2011.
 GUID: {38EF372E-117F-4be2-9AA1-34028E9DF679}

c_System_GetListOfSources

Type: **InteractionOccurrence**
 Status: Proposed. Version 1.0. Phase 1.0.
 Package: c_Event_NumberOfSourcesChange **Keywords:**
 Detail: Created on 07.10.2011. Last modified on 07.10.2011.
 GUID: {64DF09EA-C01B-4073-8152-BEBB06C6F24B}

deferred call

Type: **Sequence**
Status: Proposed. Version 1.0. Phase 1.0.
Package: c_Event_NumberOfSourcesChange **Keywords:**
Detail: Created on 22.02.2012. Last modified on 22.02.2012.
GUID: {6EB9346B-2353-431f-BF2C-959B2C671022}

Connections

Connector	Source	Target	Notes
Sequence deferred call Source -> Destination	Public <anonymous>	Public deferred call	
Sequence cbNewSource(am_Source Type_s) Source -> Destination	Public deferred call	Public IAmCommandSend	
Sequence cbRemovedSource(am_S ourceType_s) Source -> Destination	Public deferred call	Public IAmCommandSend	

number of sources

Type: **InteractionFragment**
Status: Proposed. Version 1.0. Phase 1.0.
Package: c_Event_NumberOfSourcesChange **Keywords:**
Detail: Created on 22.02.2012. Last modified on 22.02.2012.
GUID: {2951E3C7-78A2-489b-BC18-2C29D8FEE19C}

source

Type: **InteractionFragment**
Status: Proposed. Version 1.0. Phase 1.0.
Package: c_Event_NumberOfSourcesChange **Keywords:**
Detail: Created on 11.10.2011. Last modified on 11.10.2011.
GUID: {AE43811C-8923-4214-9CA3-5EF3E7C5FC9B}

c_Event_NumberOfSinkClassesChange

Type: **Package**
Status: Reworked. Version 1.0. Phase 1.0.
Package: Event Handling
Detail: Created on 07.10.2011. Last modified on 07.10.2011
GUID: {F72D93B2-441B-4a83-8B38-8B282366CC12}

c_Event_NumberOfSinkClassesChange - (Interaction diagram)

Created By: christian on 07.10.2011
Last Modified: 23.02.2012
Version: 1.0. **Locked:** False
GUID: {DA147E93-E2BF-4fed-857B-26A56450FA94}

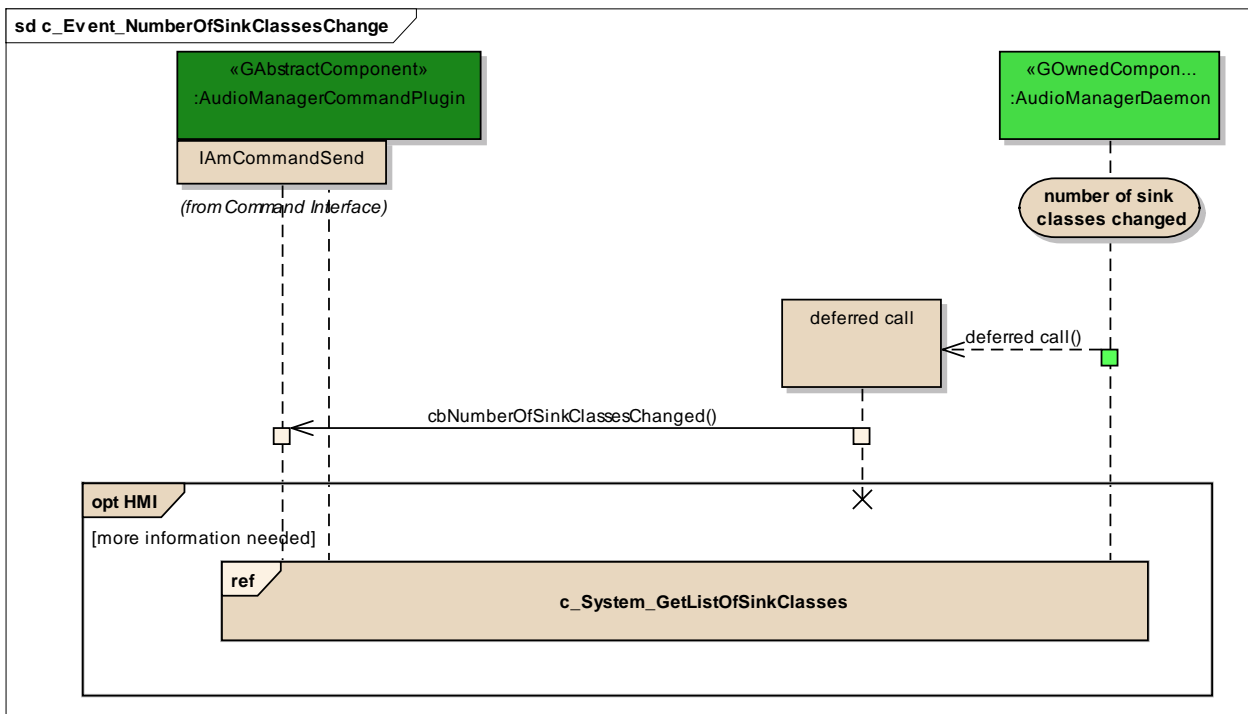


Figure: 37

HMI

Type: **InteractionFragment**
Status: Proposed. Version 1.0. Phase 1.0.
Package: c_Event_NumberOfSinkClassesChange **Keywords:**
Detail: Created on 07.10.2011. Last modified on 07.10.2011.
GUID: {898A9BE8-77C7-44f6-B39A-4EB5226B06C1}

c_System_GetListOfSinkClasses

Type: InteractionOccurrence
Status: Proposed. Version 1.0. Phase 1.0.
Package: c_Event_NumberOfSinkClassesChange *Keywords:*
Detail: Created on 07.10.2011. Last modified on 07.10.2011.
GUID: {15423ED7-36BD-45fc-B2E4-786618010635}

deferred call

Type: Sequence
Status: Proposed. Version 1.0. Phase 1.0.
Package: c_Event_NumberOfSinkClassesChange *Keywords:*
Detail: Created on 22.02.2012. Last modified on 22.02.2012.
GUID: {DA13E90F-2D8D-4ef9-8046-7D280EFC6BEA}

Connections

Connector	Source	Target	Notes
<u>Sequence</u> deferred call Source -> Destination	Public <anonymous>	Public deferred call	
<u>Sequence</u> cbNumberOfSinkClasses Changed() Source -> Destination	Public deferred call	Public IAmCommandSend	

c_Event_NumberOfSourceClassesChange

Type: Package
Status: Reworked. Version 1.0. Phase 1.0.
Package: Event Handling
Detail: Created on 07.10.2011. Last modified on 07.10.2011
GUID: {EC8CB88A-0956-4365-8543-EE22C61D7090}

c_Event_NumberOfSourceClassesChange - (Interaction diagram)

Created By: christian on 07.10.2011
Last Modified: 22.02.2012
Version: 1.0. *Locked:* False
GUID: {F739D572-E258-4c42-A2B8-F53DF5F461B5}

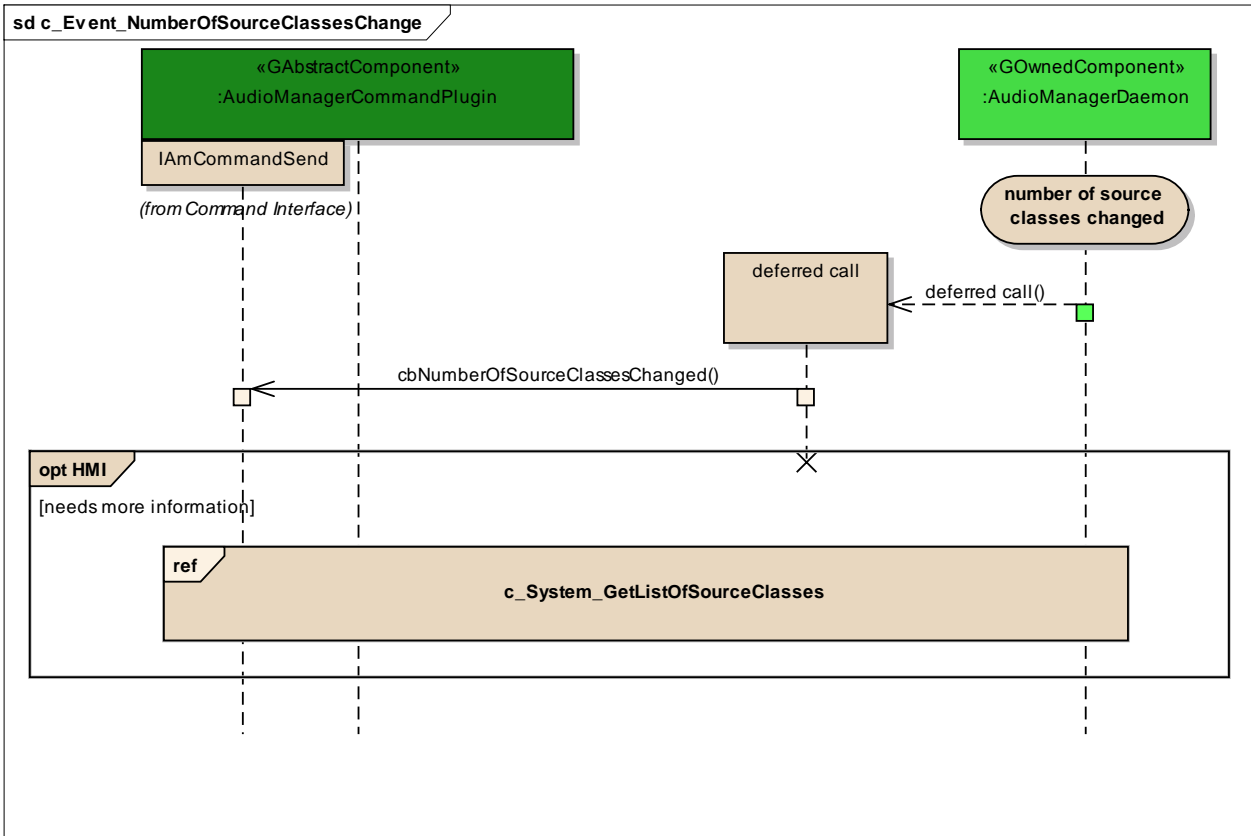


Figure: 38

HMI

Type: **InteractionFragment**
 Status: Proposed. Version 1.0. Phase 1.0.
 Package: c_Event_NumberOfSourceClassesChange *Keywords:*
 Detail: Created on 07.10.2011. Last modified on 07.10.2011.
 GUID: {7F032121-9CE4-4217-9FFD-D72FE7BD353E}

c_System_GetListOfSourceClasses

Type: **InteractionOccurrence**
 Status: Proposed. Version 1.0. Phase 1.0.
 Package: c_Event_NumberOfSourceClassesChange *Keywords:*
 Detail: Created on 07.10.2011. Last modified on 07.10.2011.
 GUID: {8F850CAD-72EB-4894-BEE9-D5F84D30029D}

deferred call

Type: **Sequence**
Status: Proposed. Version 1.0. Phase 1.0.
Package: c_Event_NumberOfSourceClassesChange **Keywords:**
Detail: Created on 22.02.2012. Last modified on 22.02.2012.
GUID: {A32C7692-DE5B-4932-AAF7-A7C4EA1066E7}

Connections

Connector	Source	Target	Notes
Sequence deferred call Source -> Destination	Public <anonymous>	Public deferred call	
Sequence cbNumberOfSourceClassesChanged() Source -> Destination	Public deferred call	Public IAmCommandSend	

Lifecycle

Type: **Package**
Status: Reworked. Version 1.0. Phase 1.0.
Package: Command Interface
Detail: Created on 09.09.2011. Last modified on 07.10.2011
GUID: {6619A6C0-7178-4e8c-BD97-9721C8BE151D}

c_Lic_InterfaceStart

Type: **Package**
Status: Reworked. Version 1.0. Phase 1.0.
Package: Lifecycle
Detail: Created on 27.09.2011. Last modified on 07.10.2011
GUID: {A4376A3F-8093-4711-8ACC-087EDDF6D339}

c_InterfaceStart - (Interaction diagram)

Created By: christian on 27.09.2011
Last Modified: 07.03.2012
Version: 1.0. **Locked:** False
GUID: {3D5EB0B6-2FDE-43e1-8E92-1916552A53B3}

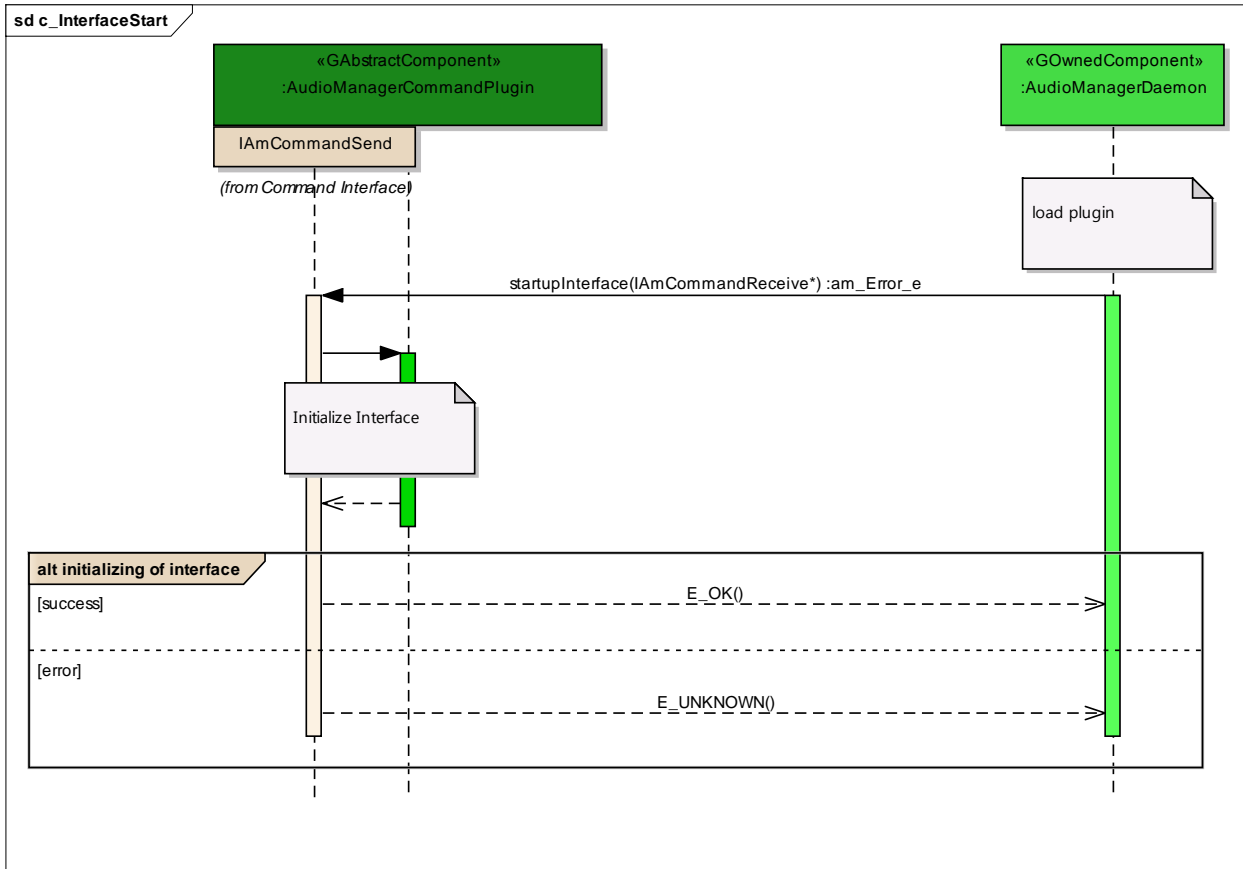


Figure: 39

initializing of interface

Type: **InteractionFragment**
 Status: Proposed. Version 1.0. Phase 1.0.
 Package: c_Lic_InterfaceStart **Keywords:**
 Detail: Created on 07.10.2011. Last modified on 07.10.2011.
 GUID: {5E010895-CDA8-4b2e-8D46-8C842D6DC796}

c_Lic_InterfaceRundown

Type: **Package**
 Status: Reworked. Version 1.0. Phase 1.0.
 Package: Lifecycle
 Detail: Created on 07.10.2011. Last modified on 07.10.2011
 GUID: {E1AA9602-0364-4533-9C8C-EBAA016DC2A1}

c_Lic_InterfaceRundown - (Interaction diagram)

Created By: christian on 07.10.2011
 Last Modified: 12.10.2011

Version: 1.0. *Locked:* False
GUID: {CD6B3A72-5A44-4b4b-BBC7-893101136B34}

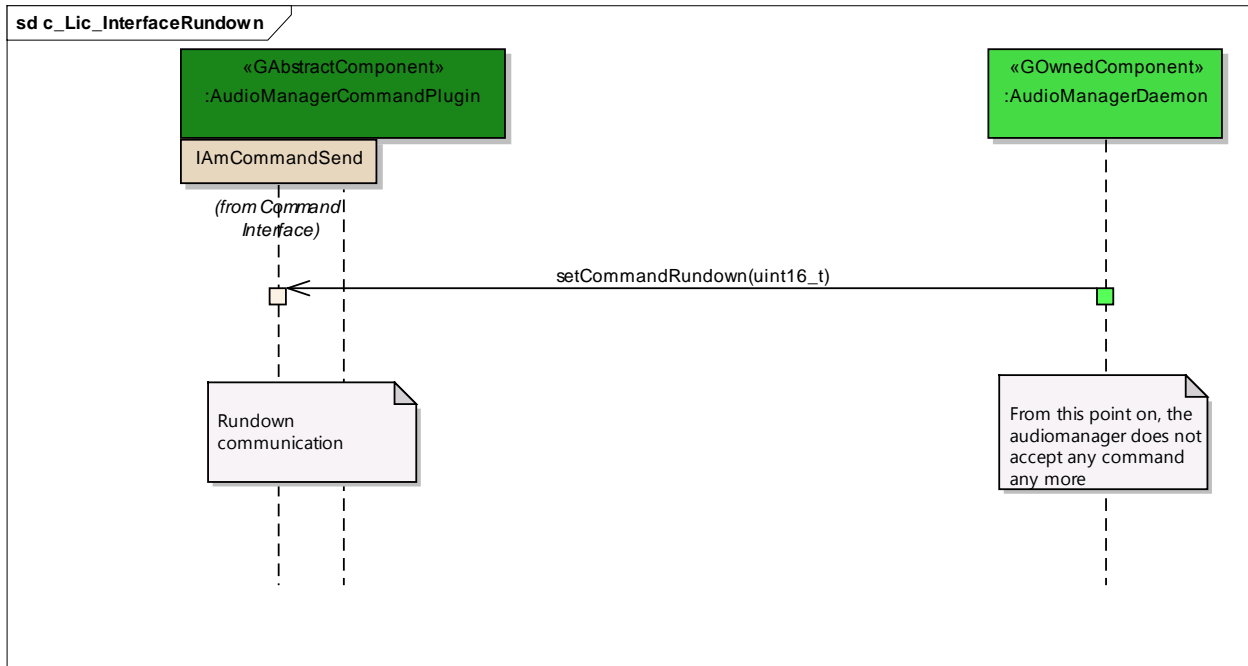


Figure: 40

c_Lic_Startup

Type: **Package**
Status: Reworked. Version 1.0. Phase 1.0.
Package: Lifecycle
Detail: Created on 16.08.2011. Last modified on 07.10.2011
GUID: {AE059294-0711-458c-A732-D72C0897C07E}

c_Lic_Startup - (Interaction diagram)

Created By: christian on 16.08.2011
Last Modified: 07.03.2012
Version: 1.0. *Locked:* False
GUID: {BC9B40B7-C8A7-4d7a-9691-C876ECC1B08F}

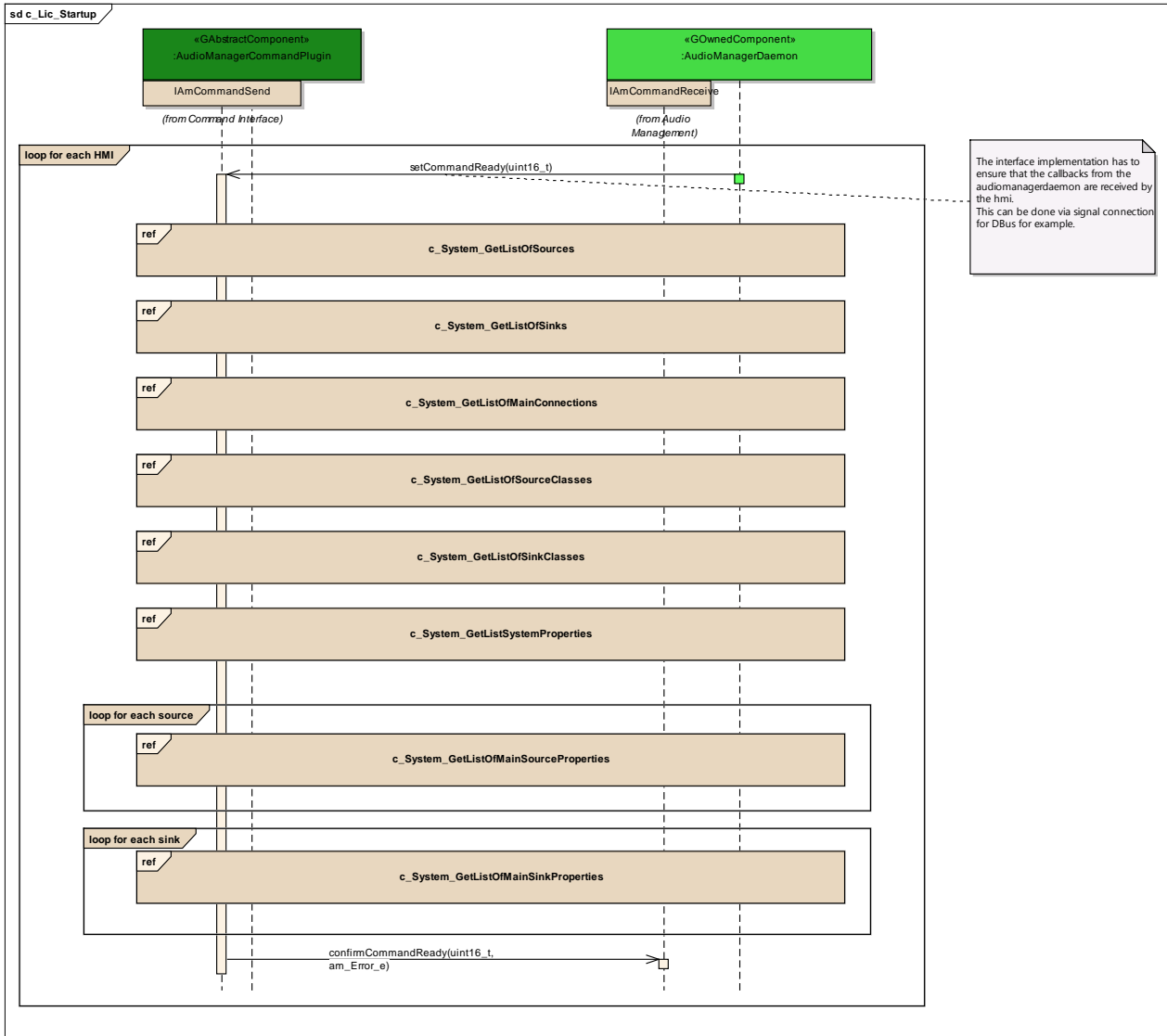


Figure: 41

c_InterfaceStart

Type: **InteractionOccurrence**
 Status: Proposed. Version 1.0. Phase 1.0.
 Package: c_Lic_Startup **Keywords:**
 Detail: Created on 27.09.2011. Last modified on 27.09.2011.
 GUID: {7C809CB3-E1AE-4555-94FA-C18371715C4B }

c_System_GetListOfMainConnections

Type: **InteractionOccurrence**
 Status: Proposed. Version 1.0. Phase 1.0.
 Package: c_Lic_Startup **Keywords:**

Detail: Created on 07.10.2011. Last modified on 07.10.2011.
GUID: {8C0913B6-30E4-473c-BB96-3D87D4B5B3F6}

c_System_GetListOfMainSinkProperties

Type: **InteractionOccurrence**
Status: Proposed. Version 1.0. Phase 1.0.
Package: c_Lic_Startup *Keywords:*
Detail: Created on 07.10.2011. Last modified on 07.10.2011.
GUID: {6889E73D-EEA0-4e08-8909-104AD95C7BF0}

c_System_GetListOfMainSourceProperties

Type: **InteractionOccurrence**
Status: Proposed. Version 1.0. Phase 1.0.
Package: c_Lic_Startup *Keywords:*
Detail: Created on 07.10.2011. Last modified on 07.10.2011.
GUID: {65205B38-7A1E-4c0c-8CA0-23AE415BCBD4}

c_System_GetListOfSinkClasses

Type: **InteractionOccurrence**
Status: Proposed. Version 1.0. Phase 1.0.
Package: c_Lic_Startup *Keywords:*
Detail: Created on 07.10.2011. Last modified on 07.10.2011.
GUID: {70CE6A96-A7D4-48e9-B341-4BB1FDAEBD86}

c_System_GetListOfSinks

Type: **InteractionOccurrence**
Status: Proposed. Version 1.0. Phase 1.0.
Package: c_Lic_Startup *Keywords:*
Detail: Created on 07.10.2011. Last modified on 07.10.2011.
GUID: {E071D1D7-7D7C-4ce2-B631-1BCD0ABF6BF1}

c_System_GetListOfSourceClasses

Type: **InteractionOccurrence**
Status: Proposed. Version 1.0. Phase 1.0.
Package: c_Lic_Startup *Keywords:*
Detail: Created on 07.10.2011. Last modified on 07.10.2011.
GUID: {0A0512CD-7ABD-4433-8148-074D5635E6A5}

c_System_GetListOfSources

Type: **InteractionOccurrence**
Status: Proposed. Version 1.0. Phase 1.0.
Package: c_Lic_Startup *Keywords:*
Detail: Created on 07.10.2011. Last modified on 07.10.2011.
GUID: {9213BA60-E179-43dd-B88A-94F695184E97}

c_System_GetListSystemProperties

Type: **InteractionOccurrence**
Status: Proposed. Version 1.0. Phase 1.0.
Package: c_Lic_Startup *Keywords:*
Detail: Created on 07.10.2011. Last modified on 07.10.2011.
GUID: {65D58437-919C-45c3-9606-D01A1C311A40}

for each HMI

Type: **InteractionFragment**
Status: Proposed. Version 1.0. Phase 1.0.
Package: c_Lic_Startup *Keywords:*
Detail: Created on 12.10.2011. Last modified on 12.10.2011.
GUID: {BE39FD72-0E54-4416-9948-1E6647D283A8}

for each sink

Type: **InteractionFragment**
Status: Proposed. Version 1.0. Phase 1.0.
Package: c_Lic_Startup *Keywords:*
Detail: Created on 07.10.2011. Last modified on 07.10.2011.
GUID: {91AD5F18-D0B4-4adc-A301-DAC57BEEBFCA}

for each source

Type: **InteractionFragment**
 Status: Proposed. Version 1.0. Phase 1.0.
 Package: c_Lic_Startup *Keywords:*
 Detail: Created on 07.10.2011. Last modified on 07.10.2011.
 GUID: {C1D5D845-8944-4d84-BCA3-BDDD38A523FF}

c_Lic_Rundown

Type: **Package**
 Status: Reworked. Version 1.0. Phase 1.0.
 Package: Lifecycle
 Detail: Created on 22.09.2011. Last modified on 07.10.2011
 GUID: {718E3DD2-8B4C-40b5-928A-0155F6936AD2}

c_Lic Rundown - (Interaction diagram)

Created By: christian on 22.09.2011
 Last Modified: 07.03.2012
 Version: 1.0. *Locked:* False
 GUID: {AA19C8D3-625F-4f67-9BC4-4A30A038F152}

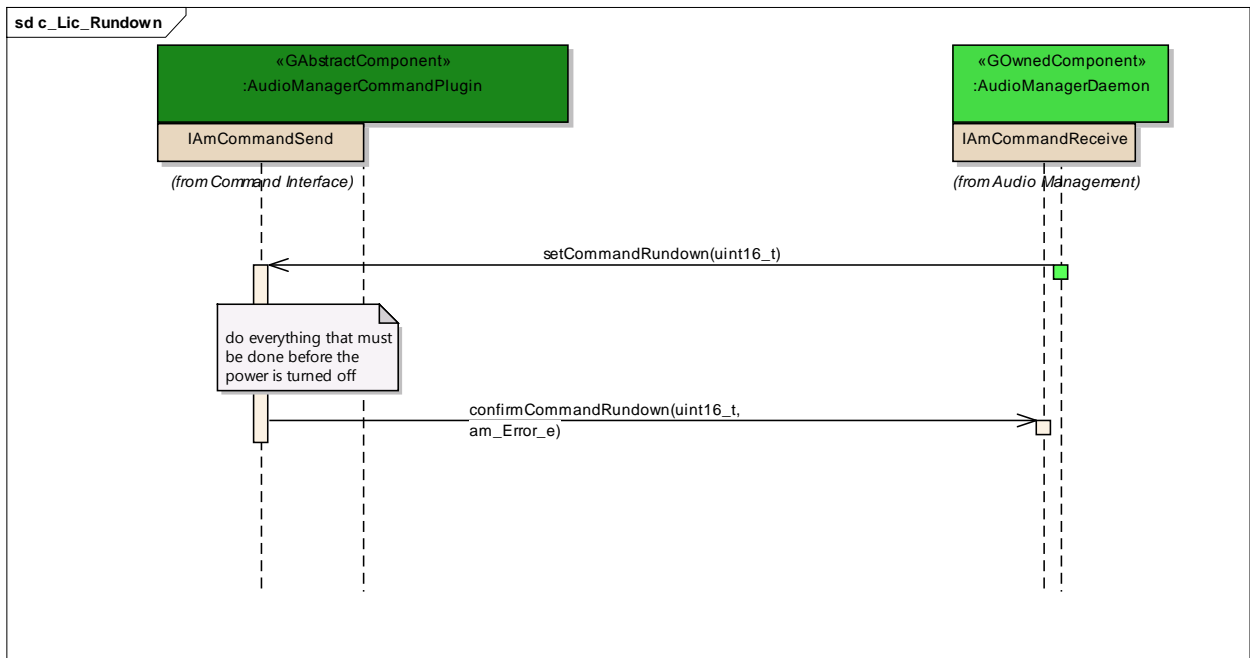


Figure: 42

c_Lic_InterfaceRundown

Type: **InteractionOccurrence**
Status: Proposed. Version 1.0. Phase 1.0.
Package: c_Lic_Rundown *Keywords:*
Detail: Created on 07.10.2011. Last modified on 07.10.2011.
GUID: {F8CAF155-C06F-4dfc-A863-038300BAF2B6}

c_Lic_DbusHandling

Type: **Package**
Status: Reworked. Version 1.0. Phase 1.0.
Package: Lifecycle
Detail: Created on 27.09.2011. Last modified on 07.10.2011
GUID: {2C97AE51-0297-4abe-9CA1-4E71A7814E8E}

c_Lic_DbusHandling - (Interaction diagram)

Created By: christian on 27.09.2011
Last Modified: 07.03.2012
Version: 1.0. *Locked:* False
GUID: {413E1250-86D0-44fc-84FC-11E277525D7A}

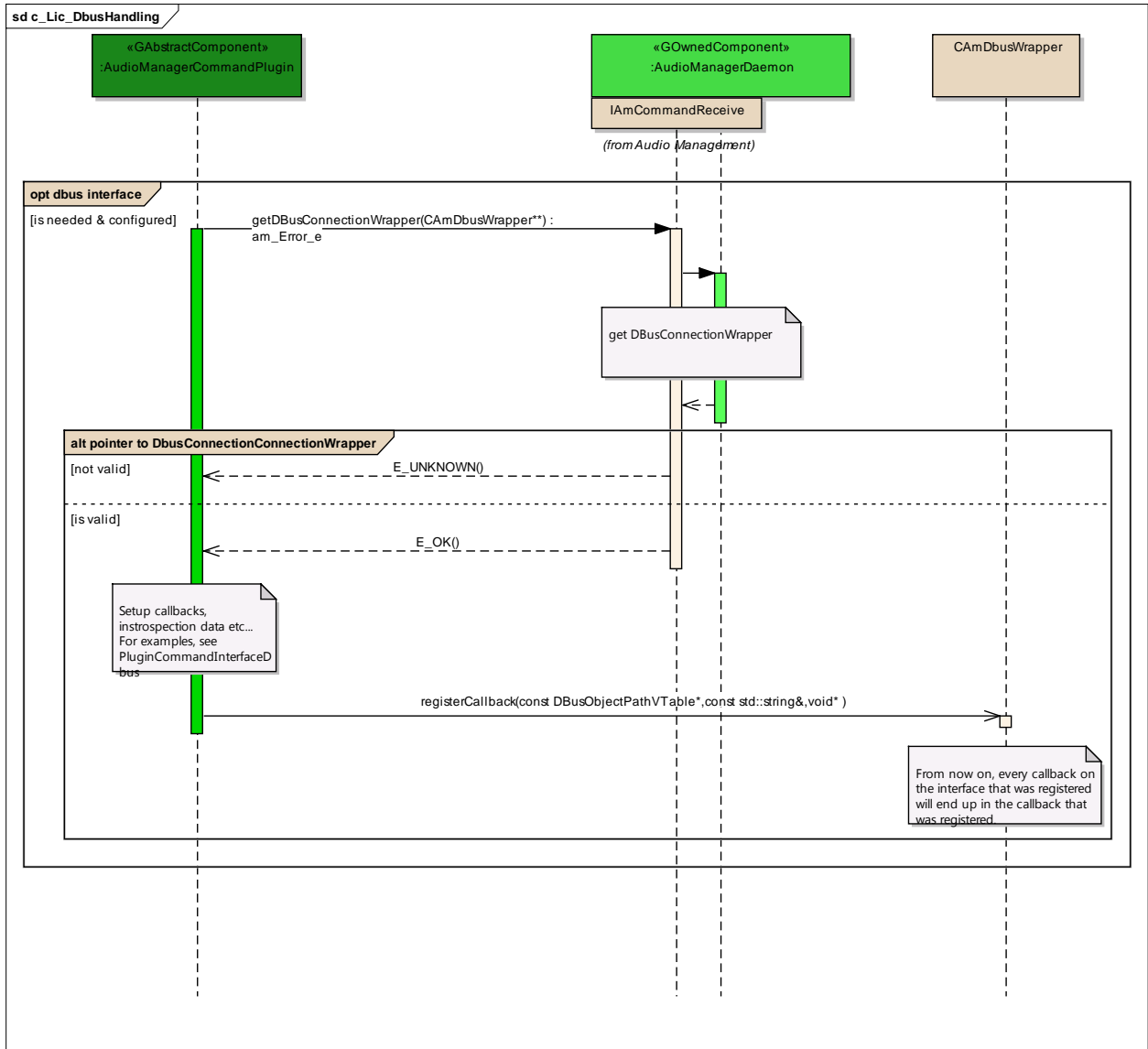


Figure: 43

CAmDBusWrapper

Type: **Sequence**
 Status: Proposed. Version 1.0. Phase 1.0.
 Package: c_Lic_DbusHandling **Keywords:**
 Detail: Created on 07.03.2012. Last modified on 07.03.2012.
 GUID: {0852A21C-FD7B-4ec7-A693-687DC0AC58C1}

Connections

Connector	Source	Target	Notes
Sequence registerCallback(const DbusObjectPathVTable*,	Public <anonymous>	Public CAmDBusWrapper	

Connector	Source	Target	Notes
const std::string&,void*) Source -> Destination			

dbus interface

Type: **InteractionFragment**
Status: Proposed. Version 1.0. Phase 1.0.
Package: c_Lic_DbusHandling *Keywords:*
Detail: Created on 27.09.2011. Last modified on 27.09.2011.
GUID: {DDF038A9-1F6D-427c-98A5-80D368AA03B1}

pointer to DbusConnectionConnectionWrapper

Type: **InteractionFragment**
Status: Proposed. Version 1.0. Phase 1.0.
Package: c_Lic_DbusHandling *Keywords:*
Detail: Created on 13.10.2011. Last modified on 07.03.2012.
GUID: {9979857D-6E89-4cd1-A91A-C52C8B319199}

registering of node

Type: **InteractionFragment**
Status: Proposed. Version 1.0. Phase 1.0.
Package: c_Lic_DbusHandling *Keywords:*
Detail: Created on 13.10.2011. Last modified on 13.10.2011.
GUID: {0D4E9542-CC5E-4157-A998-0339BAC0EB44}

8 Headers

8.1 IAmCommandReceive

```
/**
 * Copyright (C) 2012 - 2014, BMW AG
 *
 * This file is part of GENIVI Project AudioManager.
 *
 * Contributions are licensed to the GENIVI Alliance under one or more
 * Contribution License Agreements.
 *
 * \copyright
 * This Source Code Form is subject to the terms of the
 * Mozilla Public License, v. 2.0. If a copy of the MPL was not distributed with
 * this file, You can obtain one at http://mozilla.org/MPL/2.0/.
 *
 *
 * \author Christian Linke, christian.linke@bmw.de BMW 2011 - 2014
 *
 * \file
 * For further information see http://projects.genivi.org/audio-manager
 *
 * THIS CODE HAS BEEN GENERATED BY ENTERPRISE ARCHITECT GENIVI MODEL.
 * PLEASE CHANGE ONLY IN ENTERPRISE ARCHITECT AND GENERATE AGAIN.
 */
#ifndef EA_FA7CC74B_CBCB_4356_89AE_B7F88A8CEC7F__INCLUDED_
#define EA_FA7CC74B_CBCB_4356_89AE_B7F88A8CEC7F__INCLUDED_

#include <vector>
#include <string>
#include "audiomanagertypes.h"
namespace am {
class CAmDbusWrapper;
class CAmSocketHandler;
}

#include "audiomanagertypes.h"

#define CommandReceiveVersion "2.0"
namespace am {

/**
 * The interface towards the Controlling Instance (e.g HMI). It handles the
```

```

* communication towards the HMI and other system components who need to interact
* with the audiomanagement.
* There are two rules that have to be kept in mind when implementing against this
* interface:\n
* \warning
* 1. CALLS TO THIS INTERFACE ARE NOT THREAD SAFE !!!! \n
* 2. YOU MAY NOT CALL THE CALLING INTERFACE DURING AN SYNCHRONOUS OR ASYNCHRONOUS
* CALL THAT EXPECTS A RETURN VALUE.\n
* \details
* Violation these rules may lead to unexpected behavior! Nevertheless you can
* implement thread safe by using the deferred-call pattern described on the wiki
* which also helps to implement calls that are forbidden.\n
* For more information, please check CAmSerializer
*/
class IAmCommandReceive
{
public:
    IAmCommandReceive() {

    }

    virtual ~IAmCommandReceive() {

    }

    virtual void getInterfaceVersion(std::string& version) const =0;
    virtual am_Error_e connect(const am_sourceID_t sourceID, const am_sinkID_t sinkID,
am_mainConnectionID_t& mainConnectionID) =0;
    virtual am_Error_e disconnect(const am_mainConnectionID_t mainConnectionID) =0;
    virtual am_Error_e setVolume(const am_sinkID_t sinkID, const am_mainVolume_t volume) =0;
    virtual am_Error_e volumeStep(const am_sinkID_t sinkID, const int16_t volumeStep) =0;
    virtual am_Error_e setSinkMuteState(const am_sinkID_t sinkID, const am_MuteState_e
muteState) =0;
    virtual am_Error_e setMainSinkSoundProperty(const am_MainSoundProperty_s& soundProperty,
const am_sinkID_t sinkID) =0;
    virtual am_Error_e setMainSourceSoundProperty(const am_MainSoundProperty_s&
soundProperty, const am_sourceID_t sourceID) =0;
    virtual am_Error_e setSystemProperty(const am_SystemProperty_s& property) =0;
    virtual am_Error_e getListMainConnections(std::vector<am_MainConnectionType_s>&
listConnections) const =0;
    virtual am_Error_e getListMainSinks(std::vector<am_SinkType_s>& listMainSinks) const =0;
    virtual am_Error_e getListMainSources(std::vector<am_SourceType_s>& listMainSources)
const =0;
    virtual am_Error_e getListMainSinkSoundProperties(const am_sinkID_t sinkID,
std::vector<am_MainSoundProperty_s>& listSoundProperties) const =0;
    virtual am_Error_e getListMainSourceSoundProperties(const am_sourceID_t sourceID,
std::vector<am_MainSoundProperty_s>& listSourceProperties) const =0;

```



```

        virtual am_Error_e getListSourceClasses(std::vector<am_SourceClass_s>& listSourceClasses)
const =0;

        virtual am_Error_e getListSinkClasses(std::vector<am_SinkClass_s>& listSinkClasses) const
=0;

        virtual am_Error_e getListSystemProperties(std::vector<am_SystemProperty_s>&
listSystemProperties) const =0;

        virtual am_Error_e getTimingInformation(const am_mainConnectionID_t mainConnectionID,
am_timeSync_t& delay) const =0;

        virtual am_Error_e getDBusConnectionWrapper(CAmDBusWrapper*& dbusConnectionWrapper) const
=0;

        virtual am_Error_e getSocketHandler(CAmSocketHandler*& socketHandler) const =0;

        virtual void confirmCommandReady(const uint16_t handle, const am_Error_e error) =0;

        virtual void confirmCommandRunDown(const uint16_t handle, const am_Error_e error) =0;

        virtual am_Error_e getListMainSinkNotificationConfigurations(const am_sinkID_t sinkID,
std::vector<am_NotificationConfiguration_s>& listMainNotificationConfigurations) const =0;

        virtual am_Error_e getListMainSourceNotificationConfigurations(const am_sourceID_t
sourceID, std::vector<am_NotificationConfiguration_s>& listMainNotificationConfigurations) const
=0;

        virtual am_Error_e setMainSinkNotificationConfiguration(const am_sinkID_t sinkID, const
am_NotificationConfiguration_s& mainNotificationConfiguration) =0;

        virtual am_Error_e setMainSourceNotificationConfiguration(const am_sourceID_t sourceID,
const am_NotificationConfiguration_s& mainNotificationConfiguration) =0;

};

}

#endif // !defined(EA_FA7CC74B_CBCB_4356_89AE_B7F88A8CEC7F__INCLUDED_)

```

8.2 IAmCommandSend

```

/**
 * Copyright (C) 2012 - 2014, BMW AG
 *
 * This file is part of GENIVI Project AudioManager.
 *
 * Contributions are licensed to the GENIVI Alliance under one or more
 * Contribution License Agreements.
 *
 * \copyright
 * This Source Code Form is subject to the terms of the
 * Mozilla Public License, v. 2.0. If a copy of the MPL was not distributed with
 * this file, You can obtain one at http://mozilla.org/MPL/2.0/.
 *
 *
 * \author Christian Linke, christian.linke@bmw.de BMW 2011 - 2014
 *
 * \file
 * For further information see http://projects.genivi.org/audio-manager
 *

```

```
* THIS CODE HAS BEEN GENERATED BY ENTERPRISE ARCHITECT GENIVI MODEL.
* PLEASE CHANGE ONLY IN ENTERPRISE ARCHITECT AND GENERATE AGAIN.
*/
#if !defined(EA_68F78255_5C2E_4b32_A21C_E8CEDD4641B3__INCLUDED_)
#define EA_68F78255_5C2E_4b32_A21C_E8CEDD4641B3__INCLUDED_

#include <vector>
#include <string>
#include "audiomanagertypes.h"

namespace am {
class IAmCommandReceive;
}

#include "IAmCommandReceive.h"
#include "audiomanagertypes.h"

#define CommandSendVersion "2.0"
namespace am {

/**
 * This interface handles all communication from the AudioManagerDaemon towards
 * the system. It is designed in such a way that only callbacks with no return
 * types are implemented. So when the CommandInterfacePlugins are designed in such
 * a way that they broadcast signals to any node who is interested in the
 * particular information (like signals on Dbus for example), more information can
 * be retrieved via the CommandReceiveInterface.
 * There are two rules that have to be kept in mind when implementing against this
 * interface:\n
 * \warning
 * 1. CALLS TO THIS INTERFACE ARE NOT THREAD SAFE !!!! \n
 * 2. YOU MAY NOT CALL THE CALLING INTERFACE DURING AN SYNCHRONOUS OR ASYNCHRONOUS
 * CALL THAT EXPECTS A RETURN VALUE.\n
 * \details
 * Violation these rules may lead to unexpected behavior! Nevertheless you can
 * implement thread safe by using the deferred-call pattern described on the wiki
 * which also helps to implement calls that are forbidden.\n
 * For more information, please check CAmSerializer
 */
class IAmCommandSend
{
public:
    IAmCommandSend() {
```

```
    }

    virtual ~IAmCommandSend() {

    }

    virtual void getInterfaceVersion(std::string& version) const =0;
    virtual am_Error_e startupInterface(IAmCommandReceive* commandreceiveinterface) =0;
    virtual void setCommandReady(const uint16_t handle) =0;
    virtual void setCommandRundown(const uint16_t handle) =0;
    virtual void cbNewMainConnection(const am_MainConnectionType_s& mainConnection) =0;
    virtual void cbRemovedMainConnection(const am_mainConnectionID_t mainConnection) =0;
    virtual void cbNewSink(const am_SinkType_s& sink) =0;
    virtual void cbRemovedSink(const am_sinkID_t sinkID) =0;
    virtual void cbNewSource(const am_SourceType_s& source) =0;
    virtual void cbRemovedSource(const am_sourceID_t source) =0;
    virtual void cbNumberOfSinkClassesChanged() =0;
    virtual void cbNumberOfSourceClassesChanged() =0;
    virtual void cbMainConnectionStateChanged(const am_mainConnectionID_t connectionID, const
am_ConnectionState_e connectionState) =0;
    virtual void cbMainSinkSoundPropertyChanged(const am_sinkID_t sinkID, const
am_MainSoundProperty_s& soundProperty) =0;
    virtual void cbMainSourceSoundPropertyChanged(const am_sourceID_t sourceID, const
am_MainSoundProperty_s& soundProperty) =0;
    virtual void cbSinkAvailabilityChanged(const am_sinkID_t sinkID, const am_Availability_s&
availability) =0;
    virtual void cbSourceAvailabilityChanged(const am_sourceID_t sourceID, const
am_Availability_s& availability) =0;
    virtual void cbVolumeChanged(const am_sinkID_t sinkID, const am_mainVolume_t volume) =0;
    virtual void cbSinkMuteStateChanged(const am_sinkID_t sinkID, const am_MuteState_e
muteState) =0;
    virtual void cbSystemPropertyChanged(const am_SystemProperty_s& systemProperty) =0;
    virtual void cbTimingInformationChanged(const am_mainConnectionID_t mainConnectionID,
const am_timeSync_t time) =0;
    virtual void cbSinkUpdated(const am_sinkID_t sinkID, const am_sinkClass_t sinkClassID,
const std::vector<am_MainSoundProperty_s>& listMainSoundProperties) =0;
    virtual void cbSourceUpdated(const am_sourceID_t sourceID, const am_sourceClass_t
sourceClassID, const std::vector<am_MainSoundProperty_s>& listMainSoundProperties) =0;
    virtual void cbSinkNotification(const am_sinkID_t sinkID, const am_NotificationPayload_s&
notification) =0;
    virtual void cbSourceNotification(const am_sourceID_t sourceID, const
am_NotificationPayload_s& notification) =0;
    virtual void cbMainSinkNotificationConfigurationChanged(const am_sinkID_t sinkID, const
am_NotificationConfiguration_s& mainNotificationConfiguration) =0;
    virtual void cbMainSourceNotificationConfigurationChanged(const am_sourceID_t sourceID,
const am_NotificationConfiguration_s& mainNotificationConfiguration) =0;

};
}
```

```
#endif // !defined(EA_68F78255_5C2E_4b32_A21C_E8CEDD4641B3__INCLUDED_)
```